

QUICK
POSSESSION

THE SASHA

1,498 SQ FT | 3 BED | 2.5 BATH

169 BELMONT WAY SW



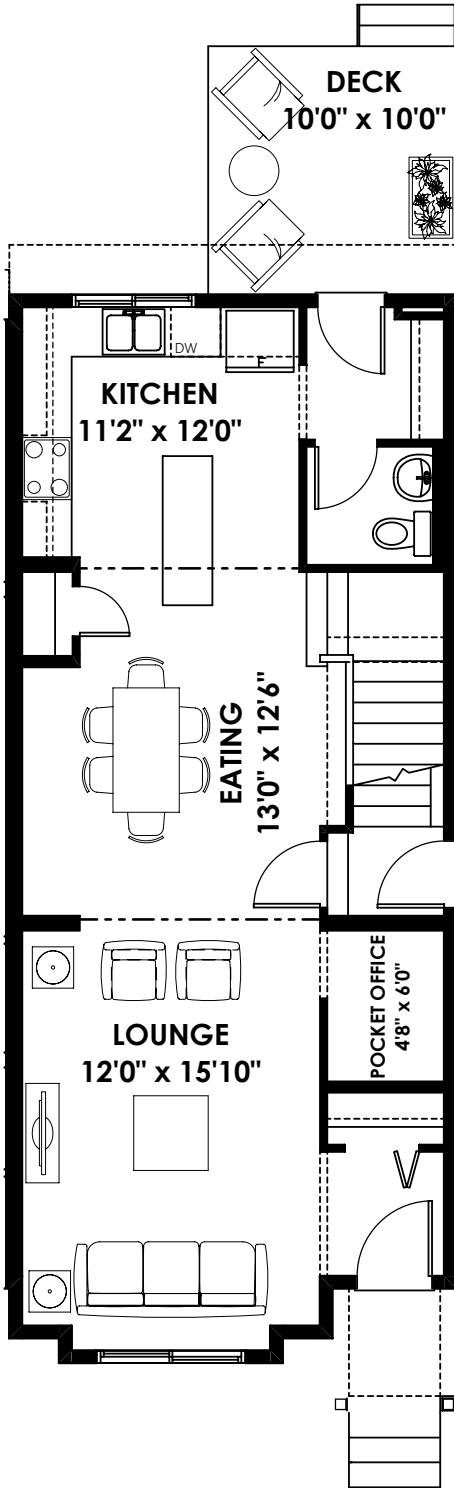
THIS DUPLEX HOME FEATURES

- Upgraded interior finishings
- Side entry
- Rear deck
- Gas-line and basement rough-ins
- 9' foundation walls
- Upgraded hot water tank and electric panel

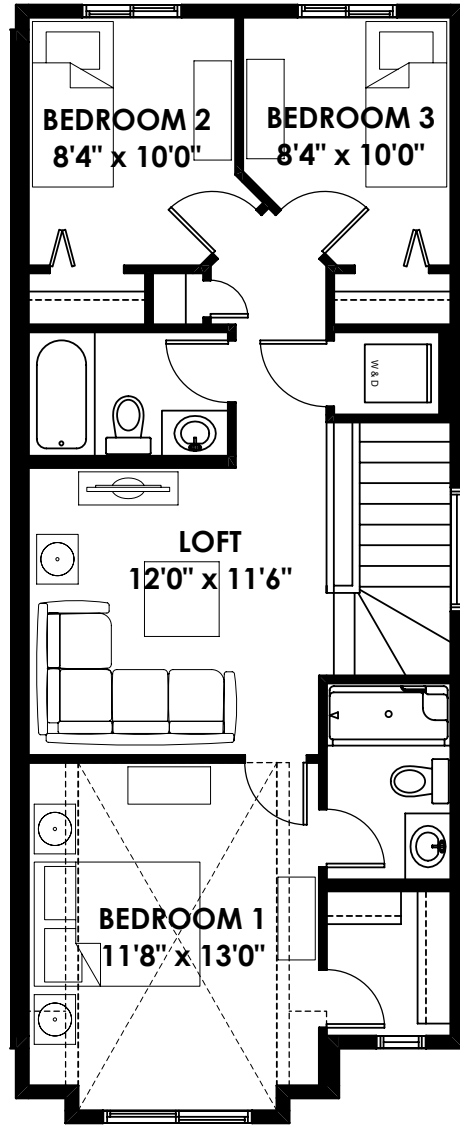
BETTER VALUE BY DESIGN
SINCE 1978 | HOMESBYAVI.COM

Homes by **AVI**

FLOOR PLAN



MAIN
755 SQ FT



UPPER
743 SQ FT

For more information or to book an appointment please contact us at **403.536.7204**

Prices are subject to change without notice. Actual floor plan, elevation, and square footage may not be exactly as shown. Square footage is measured to Alberta Building Code (ABC) regulations. Builder reserves the right to make changes without notice. E&OE.

Homes by **AVI**