

QUICK  
POSSESSION

# THE PHILLIP

2,375 FT | 5 BED | 3 BATH

229 SAVANNA DR NE



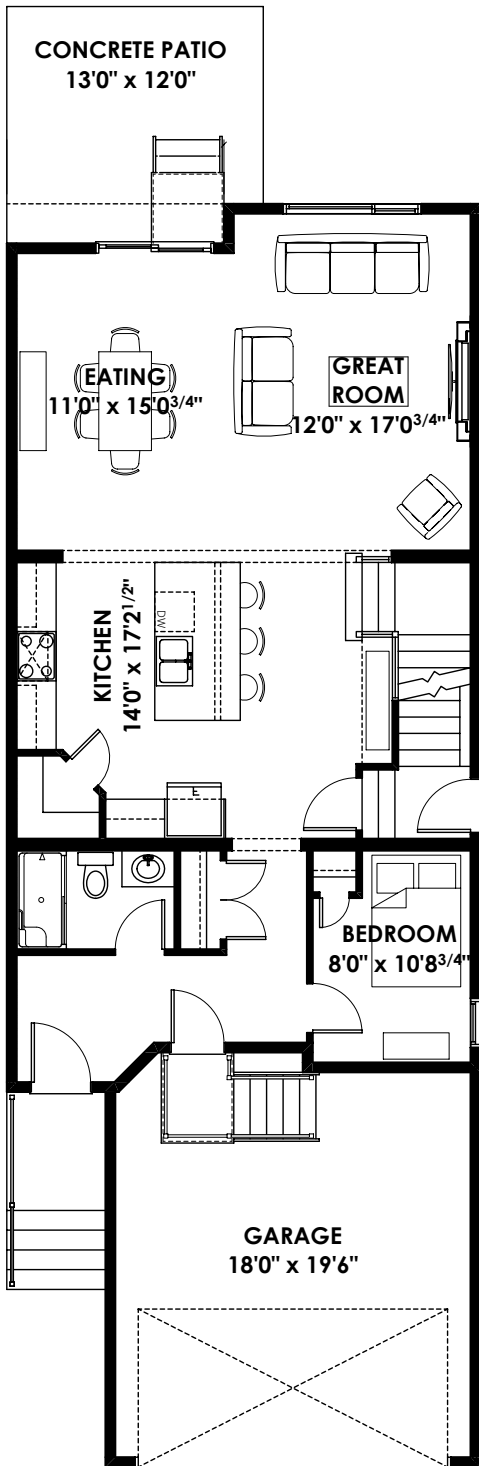
## THIS FRONT DRIVE HOME FEATURES

- 5 bedrooms (one on main floor)
- 3 full bathrooms (one full bathroom on main floor)
- Side entry door
- 9' basement foundation
- backing onto green space/future school site

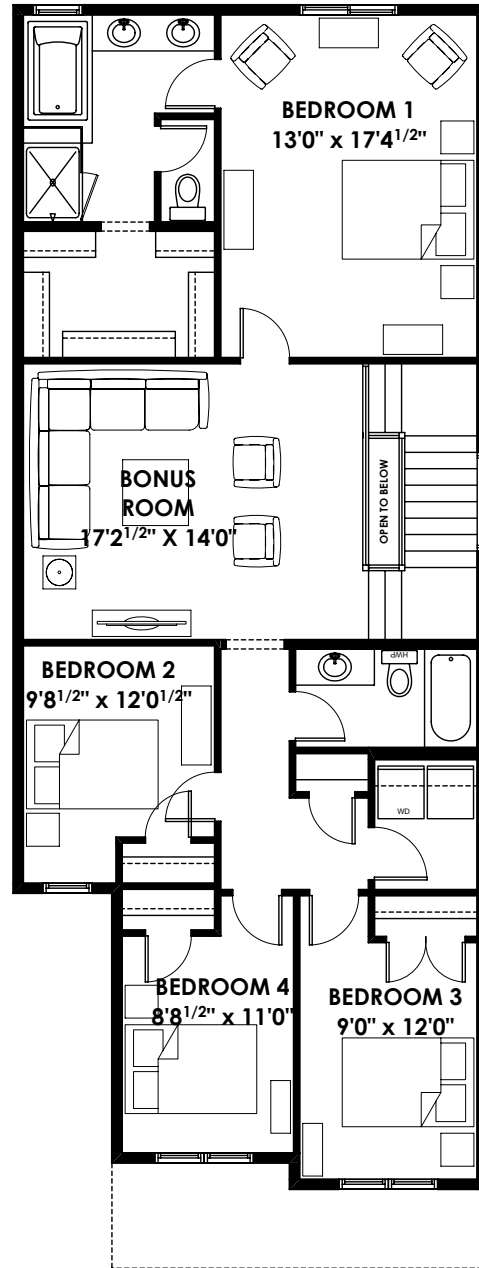
BETTER VALUE BY DESIGN  
SINCE 1978 | HOMESBYAVI.COM

Homes by **AVI**

# FLOOR PLAN



**MAIN**  
1032 SQ FT



**UPPER**  
1343 SQ FT

For more information or to book an appointment please contact us at **587.349.7808**

Prices are subject to change without notice. Actual floor plan, elevation, and square footage may not be exactly as shown. Square footage is measured to Alberta Building Code (ABC) regulations. Builder reserves the right to make changes without notice. E&OE.

Homes by **AVI**