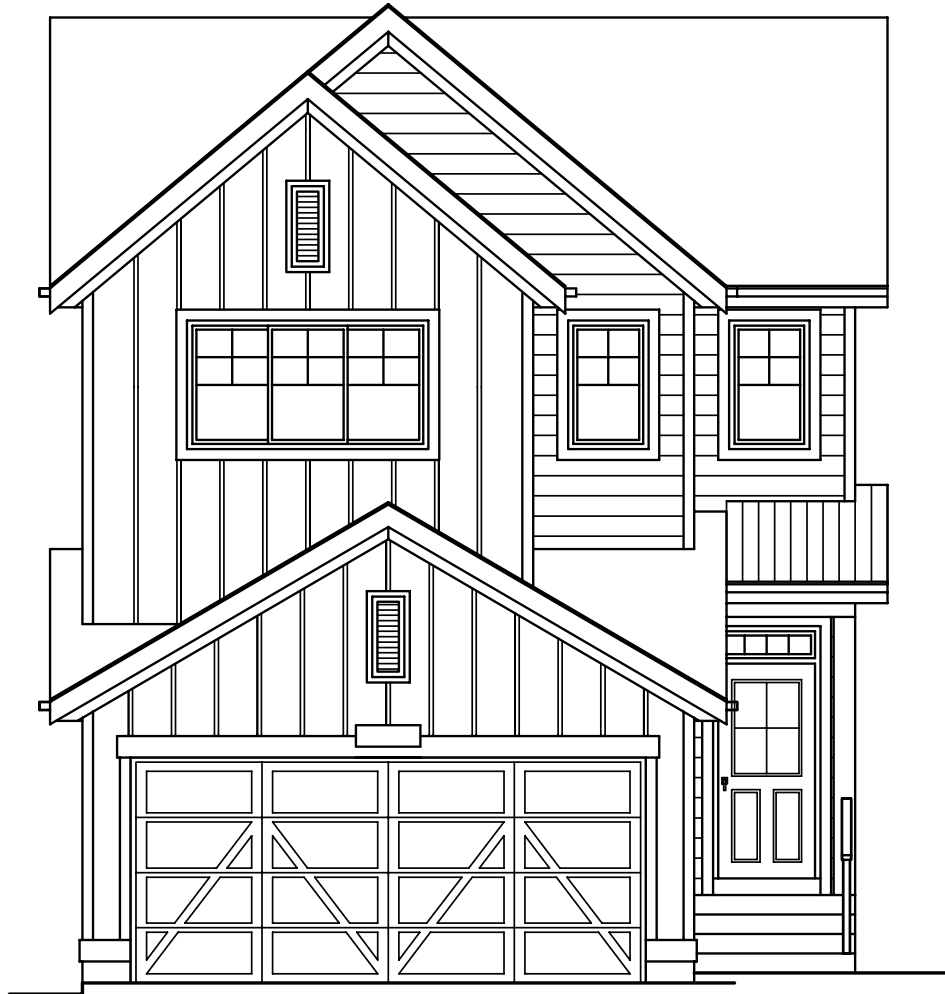


QUICK
POSSESSION

THE HEMSWORTH

2,067 SQ FT | 3 BED | 2.5 BATH

96 ROWMONT VIEW NW



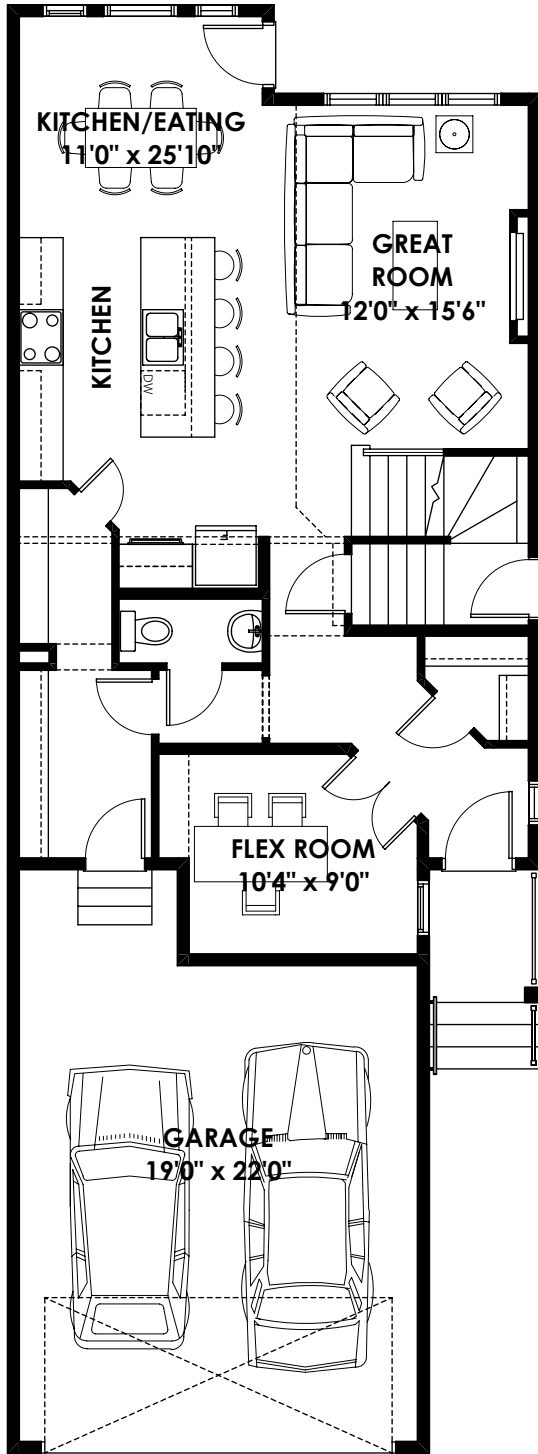
THIS FRONT DRIVE HOME FEATURES

- Open to Below with Window Wall
- Extended Kitchen & Nook
- Upgraded Ensuite
- Main Floor Flex Room
- Side Entry Door
- Rear Deck

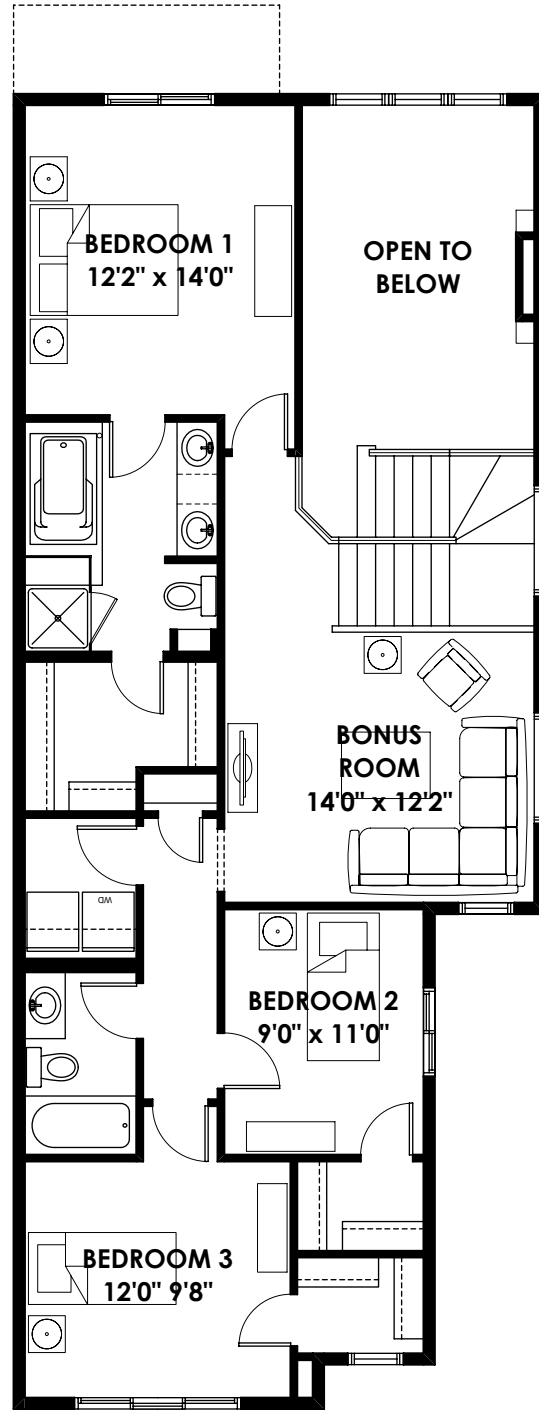
BETTER VALUE BY DESIGN
SINCE 1978 | HOMESBYAVI.COM

Homes by **AVI**

FLOOR PLAN



MAIN
937 SQ FT



UPPER
1130 SQ FT

For more information or to book an appointment please contact us at **403.536.7215**

Prices are subject to change without notice. Actual floor plan, elevation, and square footage may not be exactly as shown. Square footage is measured to Alberta Building Code (ABC) regulations. Builder reserves the right to make changes without notice. E&OE.

Homes by **AVI**