

20'

THE ALEXIS

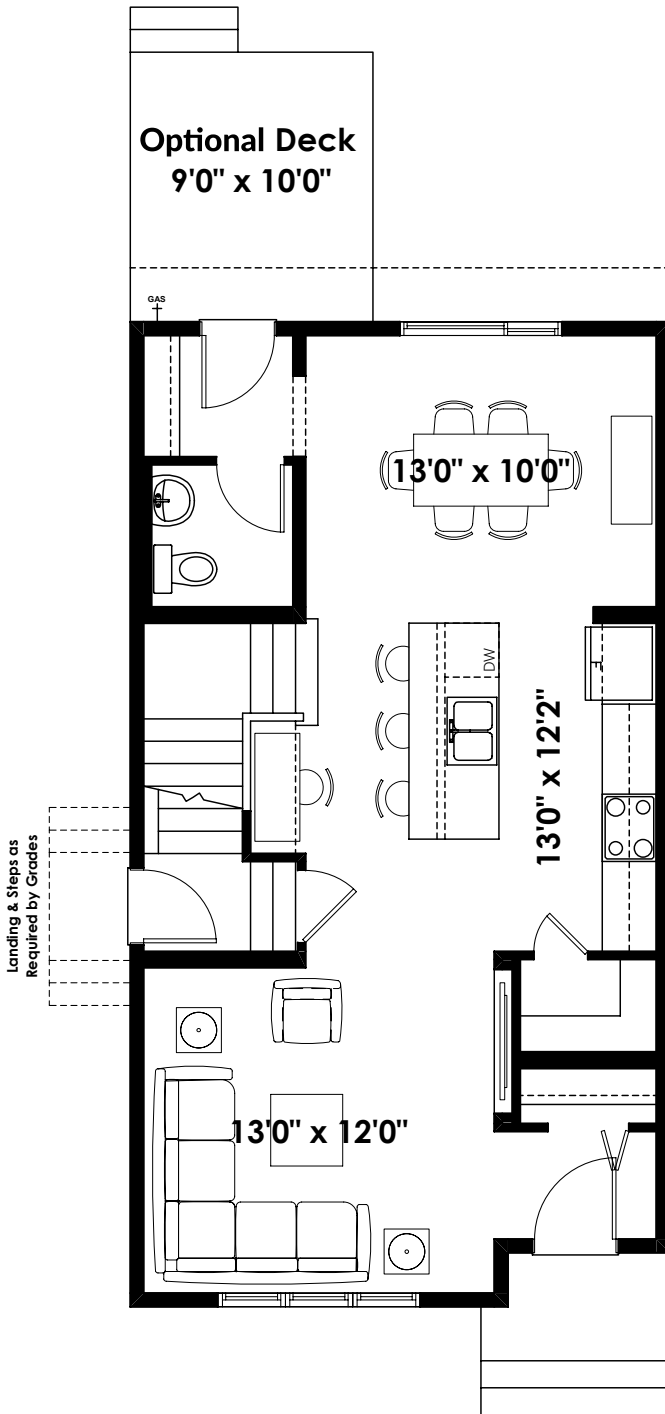
1,468+ SQ FT | 3 BED | 2.5 BATH



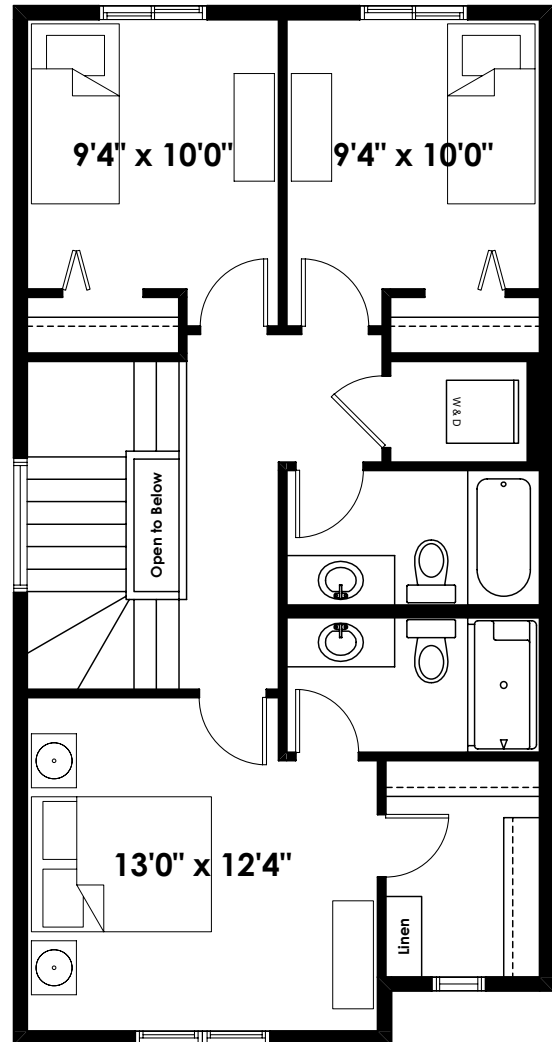
BETTER VALUE BY DESIGN
SINCE 1978 | HOMESBYAVI.COM

Homes by **AVI**

BASE FLOOR PLAN

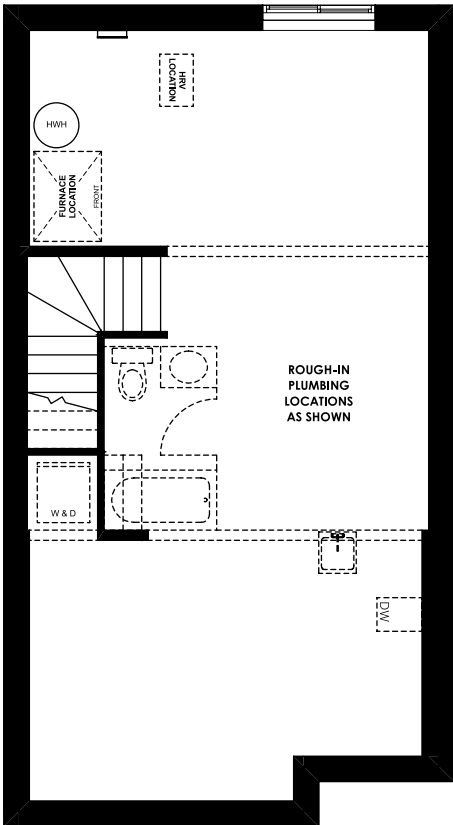


MAIN
718 SQ FT

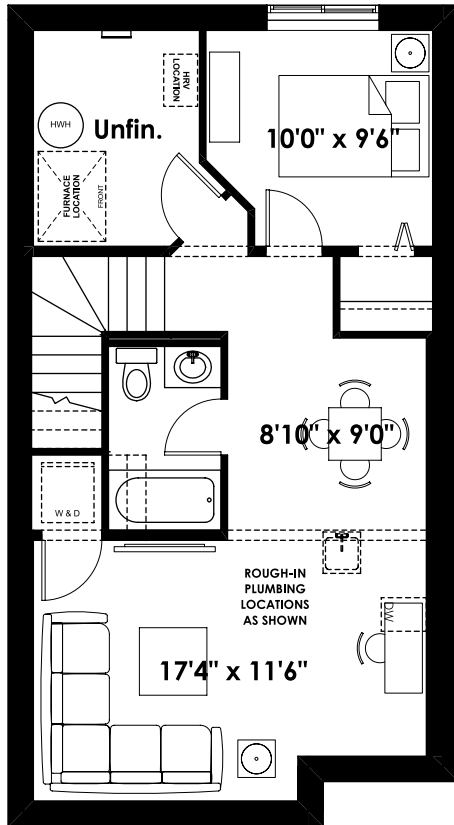


SECOND
750 SQ FT

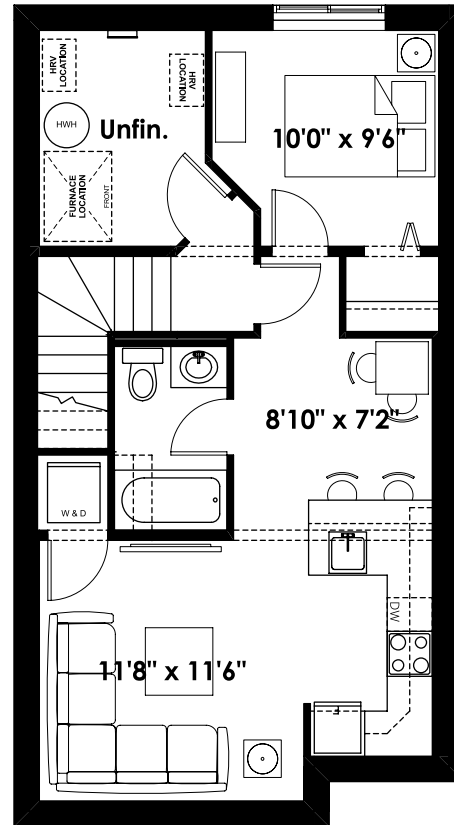
FLOOR PLAN OPTIONS



**Unfinished Basement
for 1 Bedroom Layout
(9' Foundation Walls)**



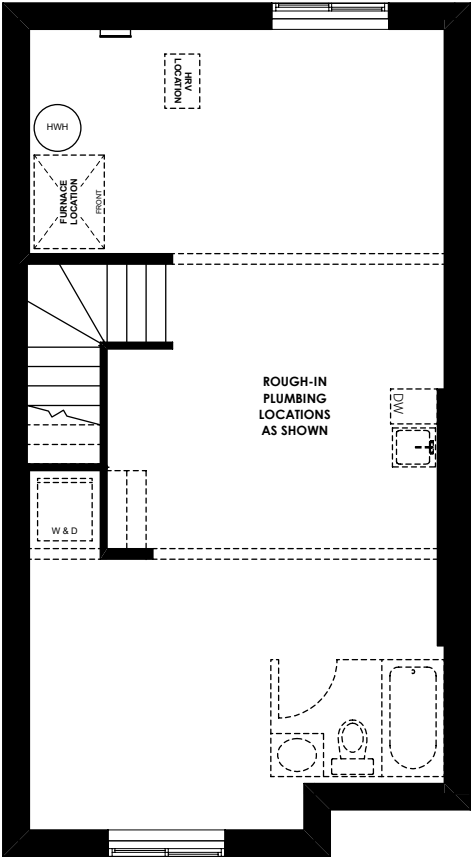
**Optional 1 Bedroom
Basement Room Layout
523 Sq. Ft. (Finished)**



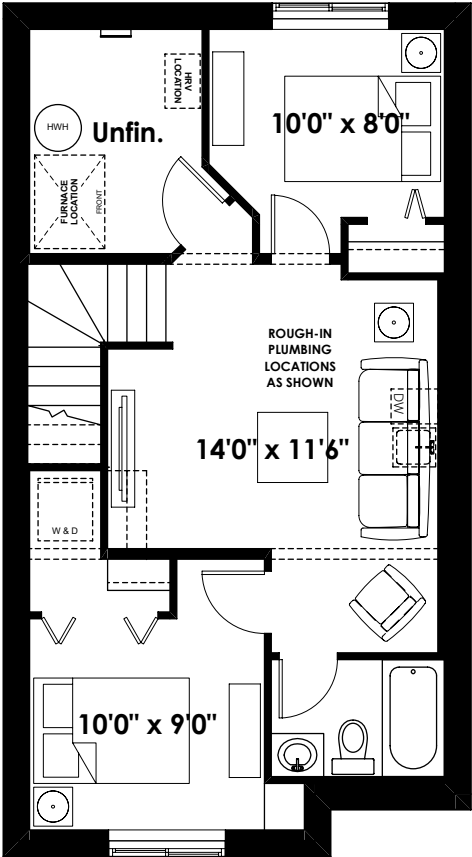
**Optional 1 Bedroom
Basement Suite Layout
523 Sq. Ft. (Finished)**

ADDITIONAL
OPTIONS

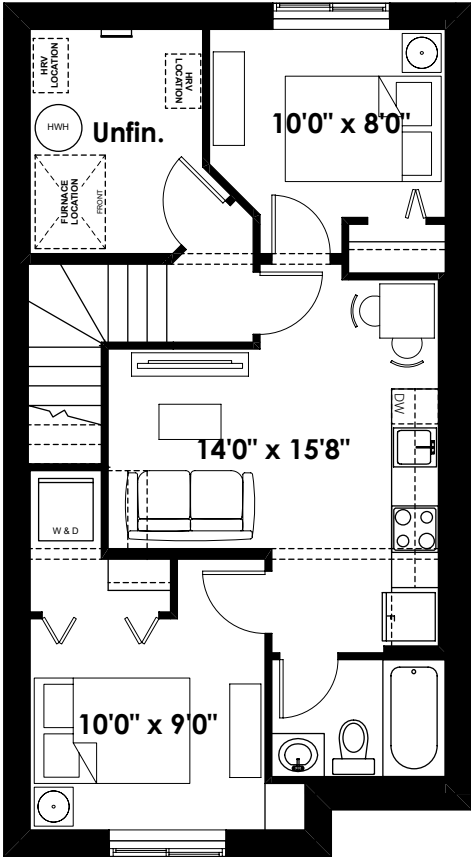
FLOOR PLAN OPTIONS



**Unfinished Basement
for 2 Bedroom Layout
(9' Foundation Walls)**



**Optional 2 Bedroom
Basement Room Layout
523 Sq. Ft. (Finished)**



**Optional 2 Bedroom
Basement Suite Layout
523 Sq. Ft. (Finished)**

Prices are subject to change without notice. Actual floor plan, elevation, and square footage may not be exactly as shown. Square footage is measured to Alberta Building Code (ABC) regulations. Builder reserves the right to make changes without notice. E&OE.