

QUICK  
POSSESSION

# THE FINLEY

1,409 SQ FT | 3 BED | 2.5 BATH

524 SORA BLVD SE



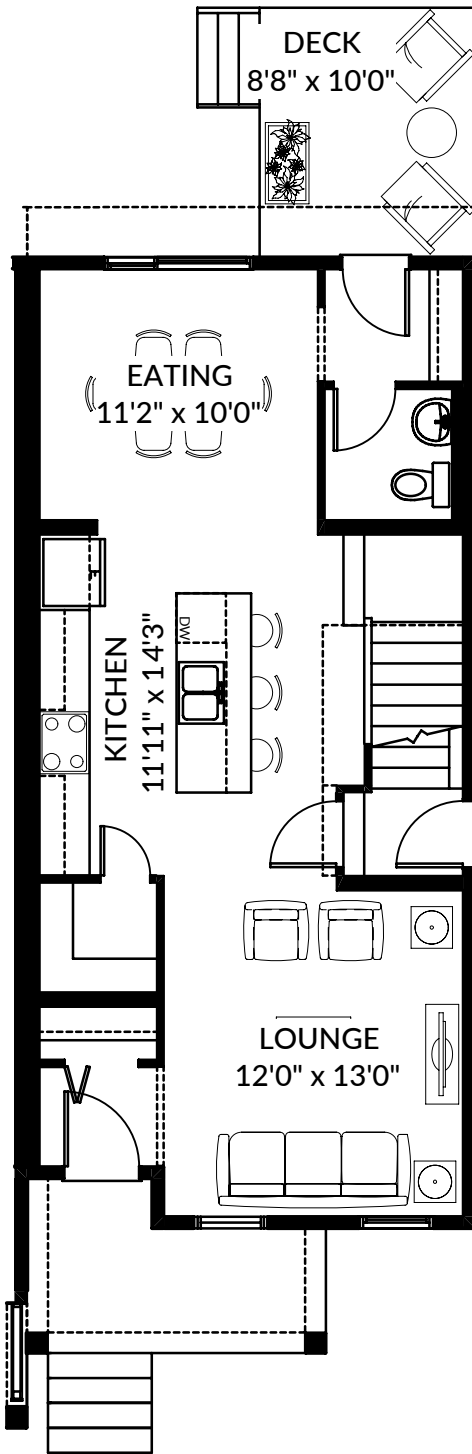
## THIS DUPLEX HOME FEATURES

- 9' on Main floor and Foundations/Basement
- Front Porch and Rear Deck
- Side Entry to Basement
- 20x20 Concrete Parking pad with Curb walls
- 400 CFM chimney hoodfan, 48" Upper Kitchen Cabinets, Quartz Throughout & More Interior Selection Upgrades

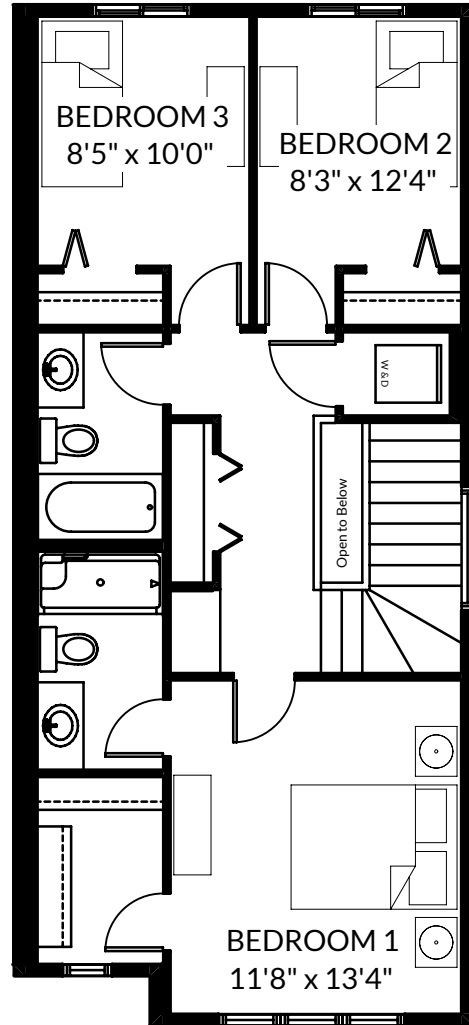
BETTER VALUE BY DESIGN  
SINCE 1978 | HOMESBYAVI.COM

Homes by **AVI**

# FLOOR PLAN



**MAIN**  
692 SQ FT



**UPPER**  
692 SQ FT

For more information or to book an appointment please contact us at **403.536.7036**

Prices are subject to change without notice. Actual floor plan, elevation, and square footage may not be exactly as shown. Square footage is measured to Alberta Building Code (ABC) regulations. Builder reserves the right to make changes without notice. E&OE.

Homes by **AVI**