

QUICK
POSSESSION

THE INDIGO

1,310 SQ FT | 3 BED | 2.5 BATH

119 LEGACY PASSAGE SE



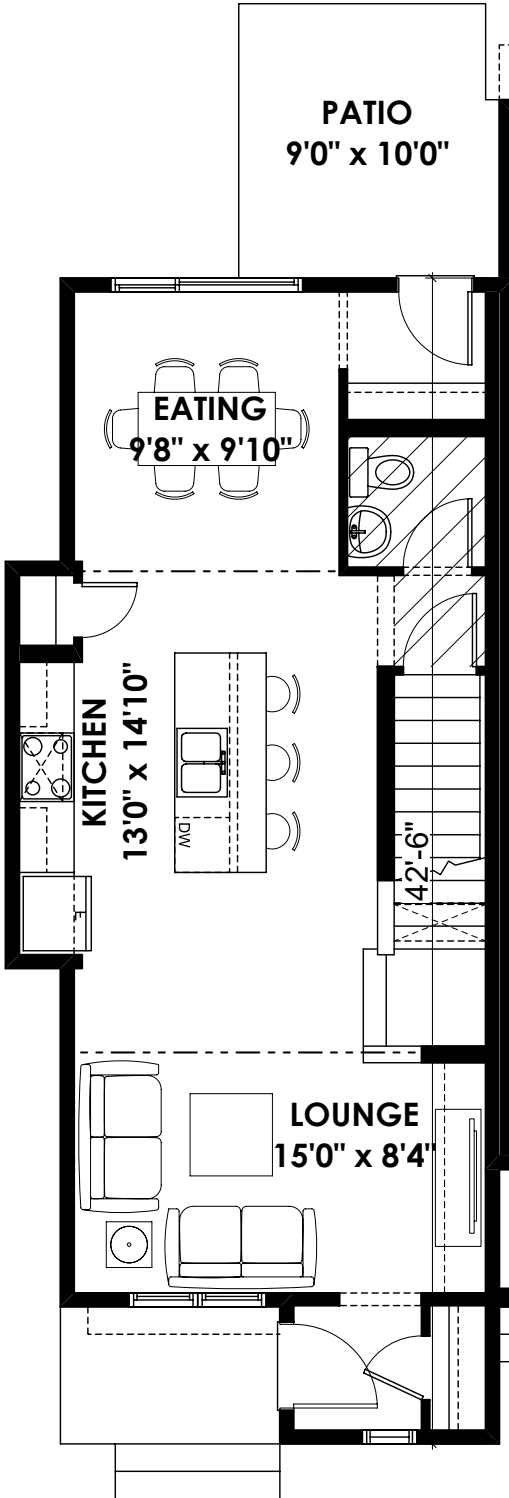
THIS TOWNHOME FEATURES

- Gas Line to Stove
- Quartz throughout Home
- Kitchen Upgrade Package
(42" Upper Cabinets, Chimney Hoodfan,
Crayon Tile Backsplash etc.)

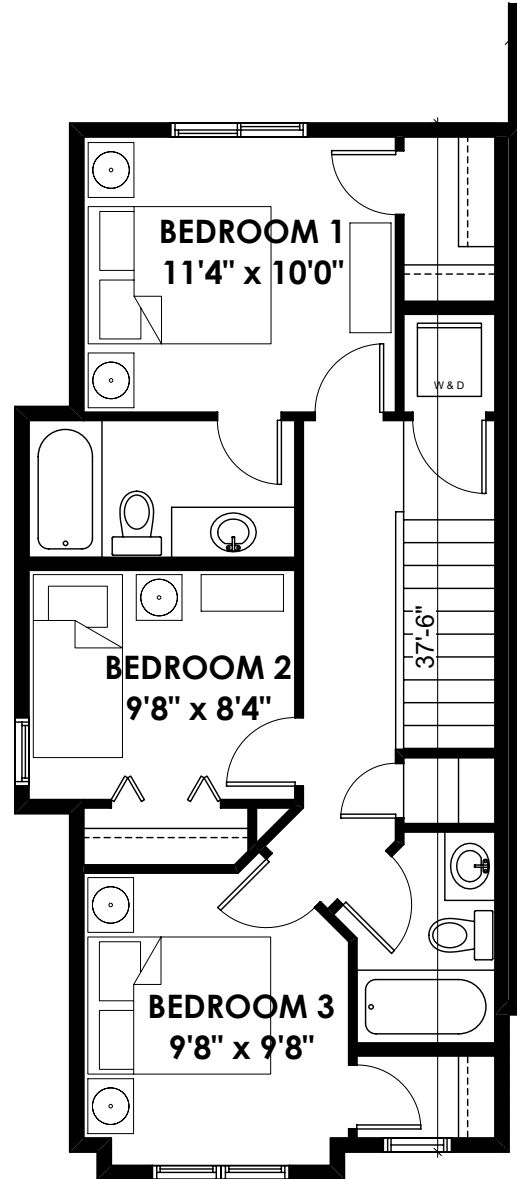
BETTER VALUE BY DESIGN
SINCE 1978 | HOMESBYAVI.COM

Homes by **AVI**

FLOOR PLAN



MAIN
670 SQ FT



BASEMENT
639 SQ FT

For more information or to book an appointment please contact us at **403-536-7191**

Prices are subject to change without notice. Actual floor plan, elevation, and square footage may not be exactly as shown. Square footage is measured to Alberta Building Code (ABC) regulations. Builder reserves the right to make changes without notice. E&OE.

Homes by **AVI**



This colour palette has a high-contrast and modern feel. The warmth of the resilient luxury vinyl plank flooring pairs perfectly with the dramatic deep toned cabinets.

I love that it is an appealing combination of popular colours and finishes, and would create a beautiful backdrop for any home.