

QUICK
POSSESSION

THE BRONTE

1,611 SQ FT | 3 BED | 2.5 BATH

44 LEGACY PASSAGE SE



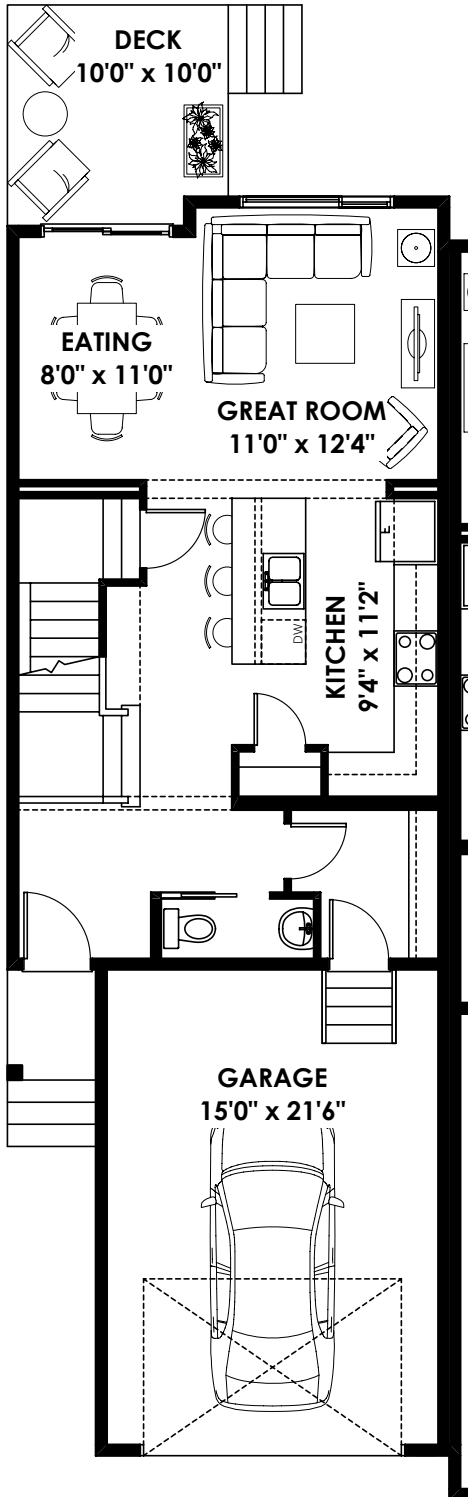
THIS FRONT DRIVE DUPLEX HOME FEATURES

- Gas Line to Stove and BBQ
- 9' Foundation
- 200A Panel
- 80 Gal HWT
- Chimney Hood fan with Built-in Microwave
- Quartz throughout the Home

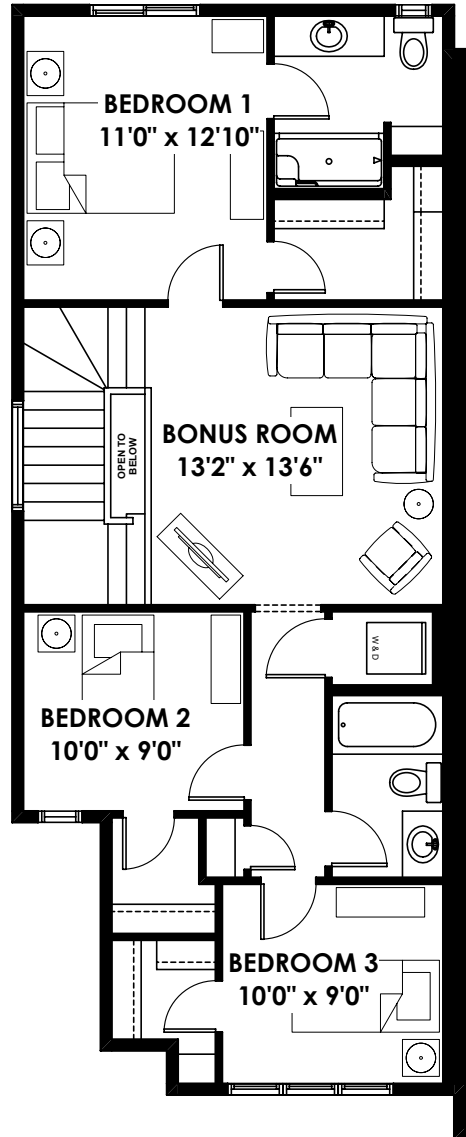
BETTER VALUE BY DESIGN
SINCE 1978 | HOMESBYAVI.COM

Homes by **AVI**

FLOOR PLAN



MAIN
689 SQ FT



BASEMENT
923 SQ FT

For more information or to book an appointment please contact us at **403-536-7191**

Prices are subject to change without notice. Actual floor plan, elevation, and square footage may not be exactly as shown. Square footage is measured to Alberta Building Code (ABC) regulations. Builder reserves the right to make changes without notice. E&OE.

Homes by **AVI**