

QUICK
POSSESSION

THE GABRIEL

2,024 SQ FT | 3 BED | 2.5 BATH

89 WALGROVE PLACE SE



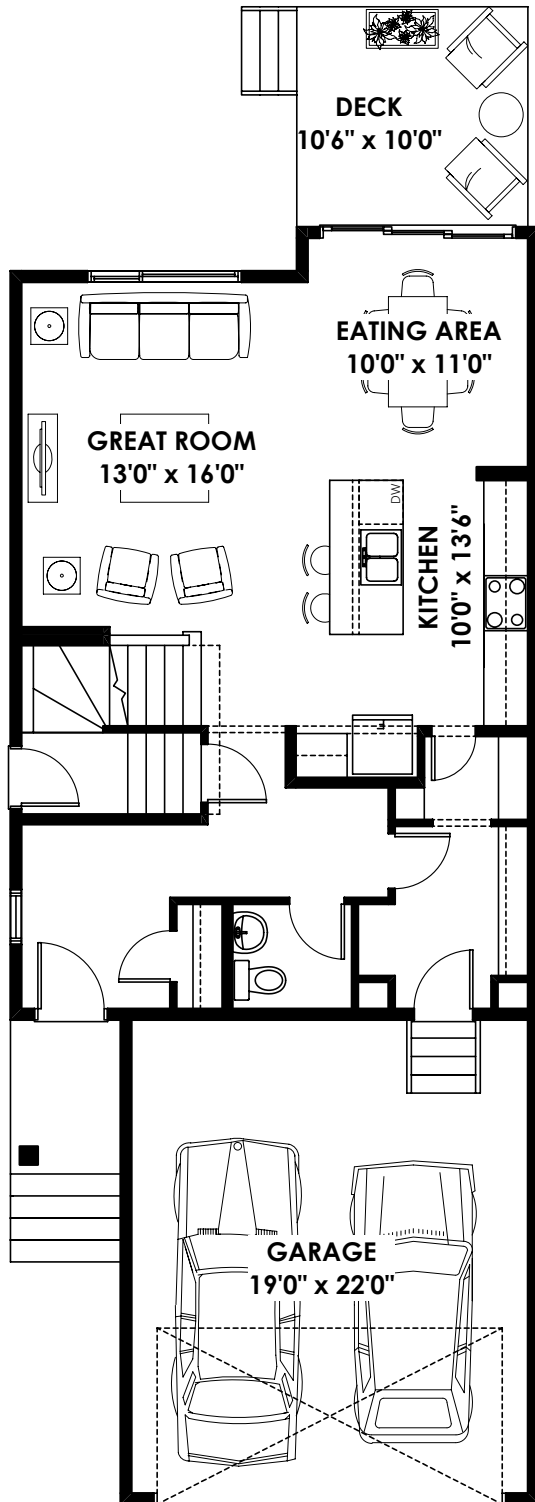
THIS FRONT DRIVE HOME FEATURES

- Nook Extension
- Upper floor pocket office
- Glass Wall shower
- Jack & Jill ensuite
- South backing yard

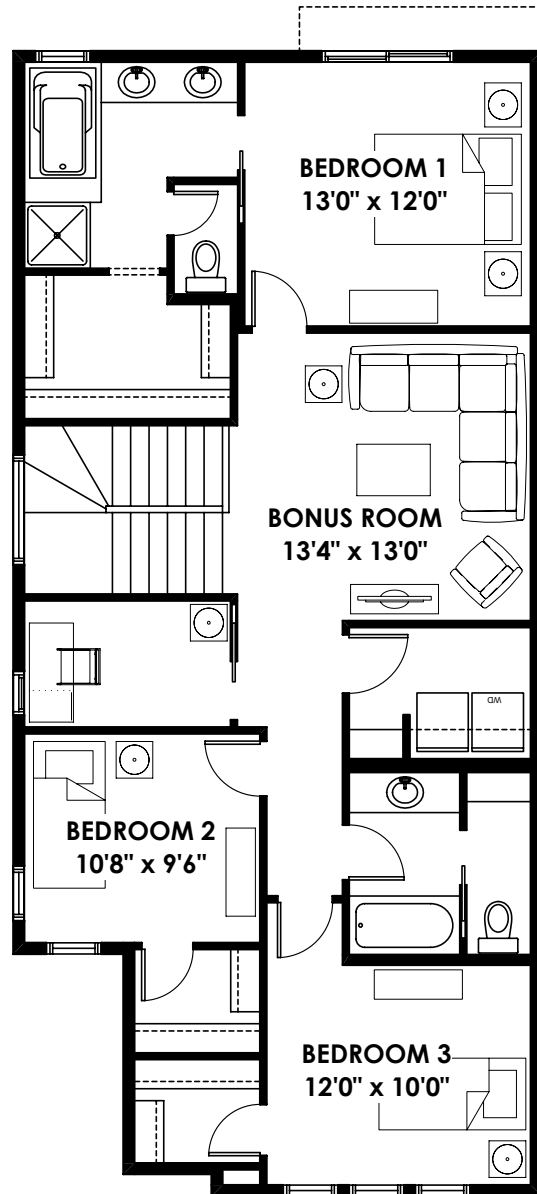
BETTER VALUE BY DESIGN
SINCE 1978 | HOMESBYAVI.COM

Homes by **AVI**

FLOOR PLAN



MAIN
838 SQ FT



BASEMENT
1,186 SQ FT

For more information or to book an appointment please contact us at **403-536-7272**

Prices are subject to change without notice. Actual floor plan, elevation, and square footage may not be exactly as shown. Square footage is measured to Alberta Building Code (ABC) regulations. Builder reserves the right to make changes without notice. E&OE.

Homes by **AVI**