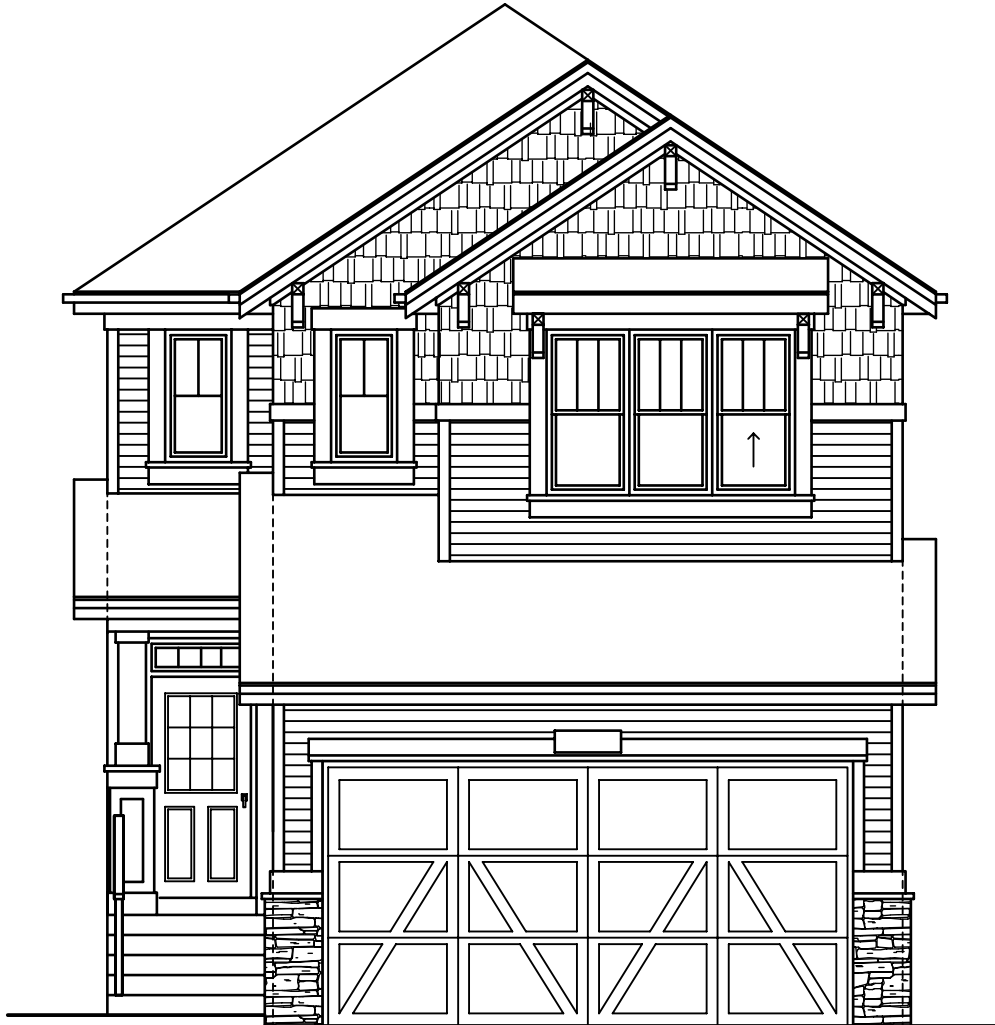


QUICK
POSSESSION

THE JEFFERSON

2,343 SQ FT | 3 BED | 2.5 BATH

81 WALGROVE PLACE SE



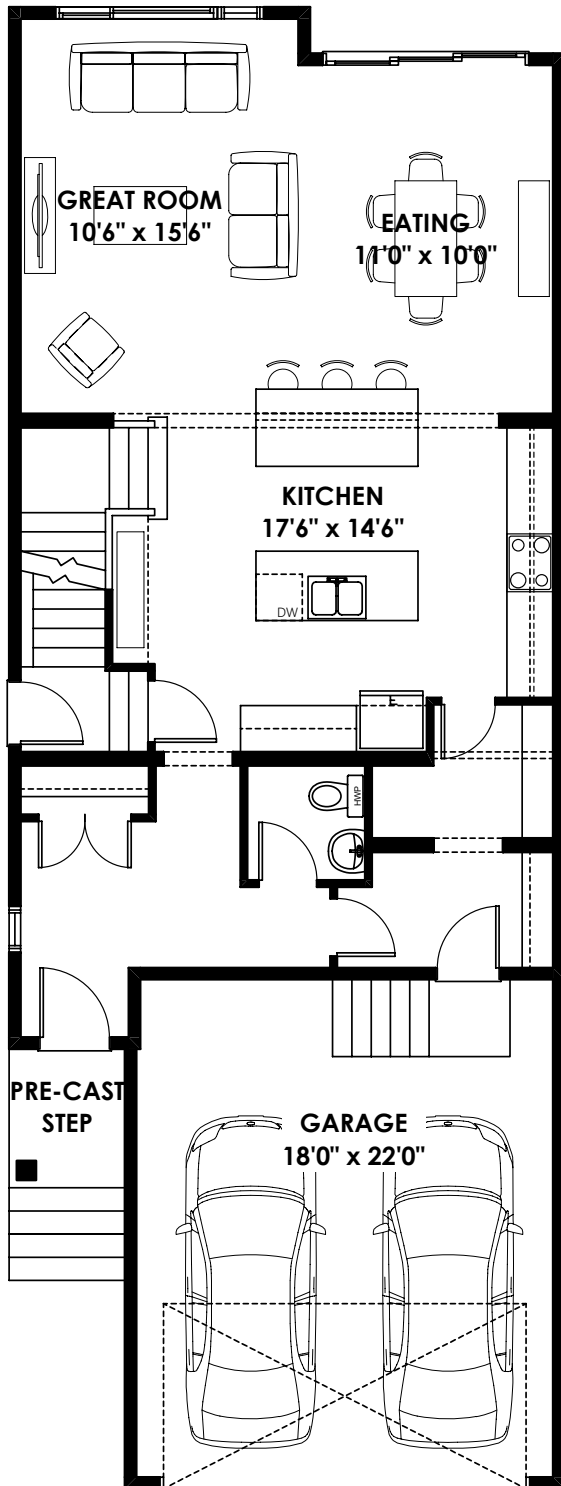
THIS FRONT DRIVE HOME FEATURES

- Double Island Kitchen
- Legal Suite Prep (Side Entrance, 9' Foundation, 200A Panel etc.)
- Double Vanity in Ensuite and Main Bathroom
- Gas Lines to Stove and BBQ

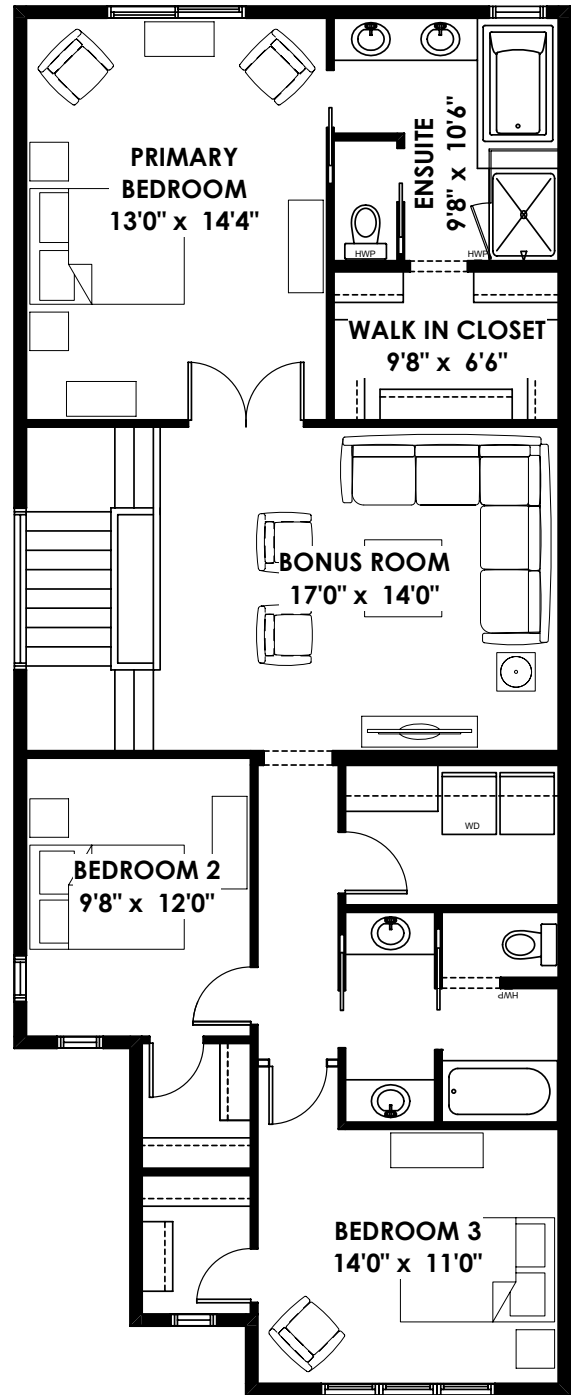
BETTER VALUE BY DESIGN
SINCE 1978 | HOMESBYAVI.COM

Homes by **AVI**

FLOOR PLAN



MAIN
1,003 SQ FT



BASEMENT
1,340 SQ FT

For more information or to book an appointment please contact us at **403-536-7272**

Prices are subject to change without notice. Actual floor plan, elevation, and square footage may not be exactly as shown. Square footage is measured to Alberta Building Code (ABC) regulations. Builder reserves the right to make changes without notice. E&OE.

Homes by **AVI**