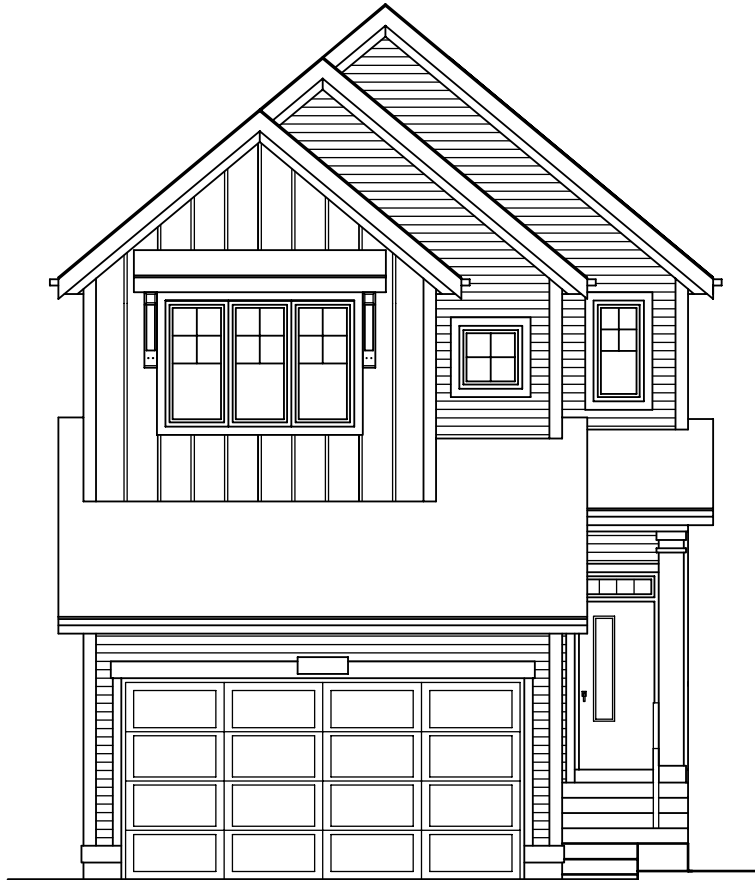


QUICK
POSSESSION

THE JEFFERSON

2,343 SQ FT | 3 BED | 2.5 BATH

113 STILES BEND



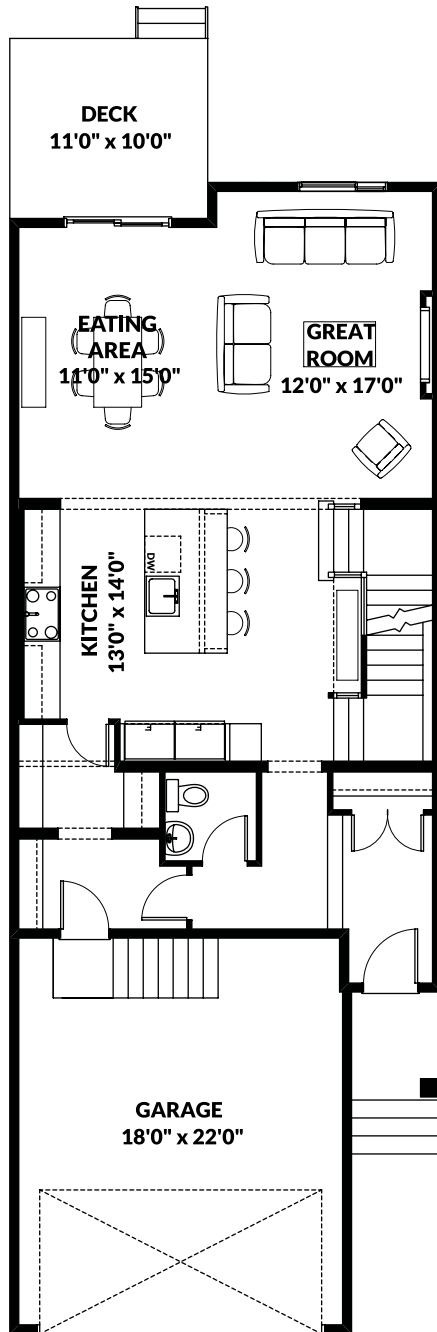
THIS FRONT DRIVE HOME FEATURES

- Large open concept main floor.
- Spacious second floor bedrooms with walk-in closets.
- Double vanity main bath.
- Second floor laundry.
- Bonus room.
- New farmhouse elevation.

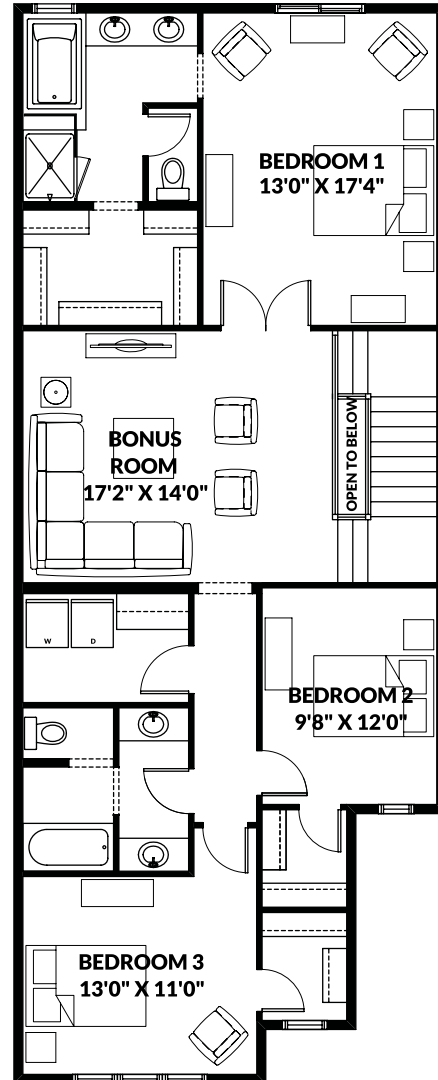
BETTER VALUE BY DESIGN
SINCE 1978 | HOMESBYAVI.COM

Homes by **AVI**

FLOOR PLAN



MAIN
1,003 SQ FT



UPPER
1,340 SQ FT

For more information or to book an appointment please contact us at **587.525.5210**

Prices are subject to change without notice. Actual floor plan, elevation, and square footage may not be exactly as shown. Square footage is measured to Alberta Building Code (ABC) regulations. Builder reserves the right to make changes without notice. E&OE.

Homes by **AVI**