

QUICK
POSSESSION

THE HEMSWORTH

2,082 SQ FT | 4 BED | 3 BATH

61 ROWMONT MANOR NW



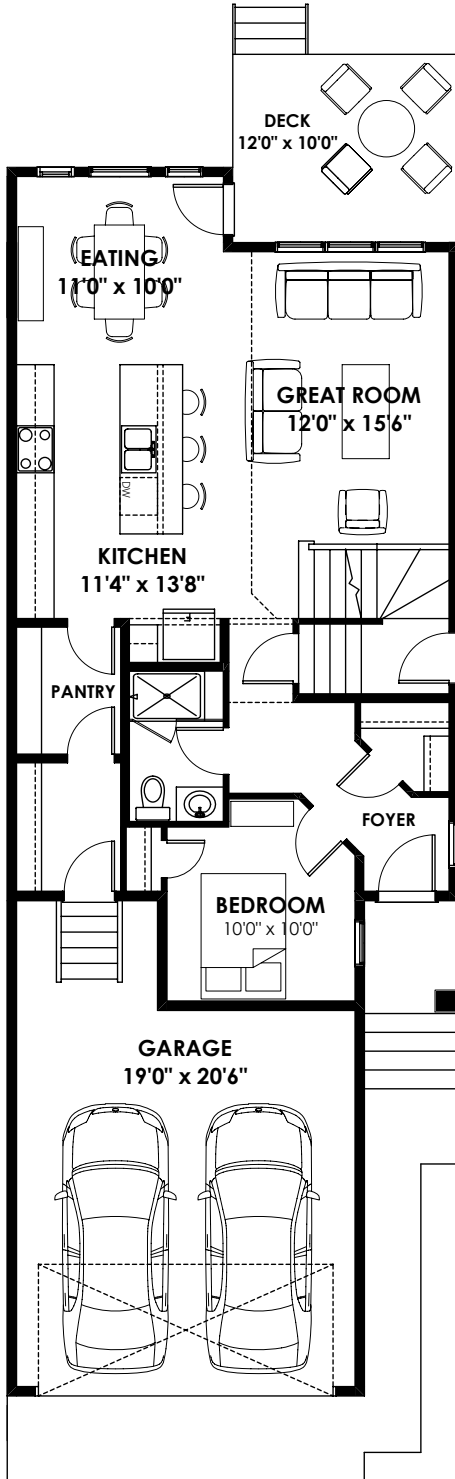
THIS FRONT DRIVE HOME FEATURES

- Main Floor Bedroom & 3 Piece Bathroom
- Open to Below
- Side Entry
- Extended Kitchen & Nook
- Rear Deck
- Upgraded Ensuite

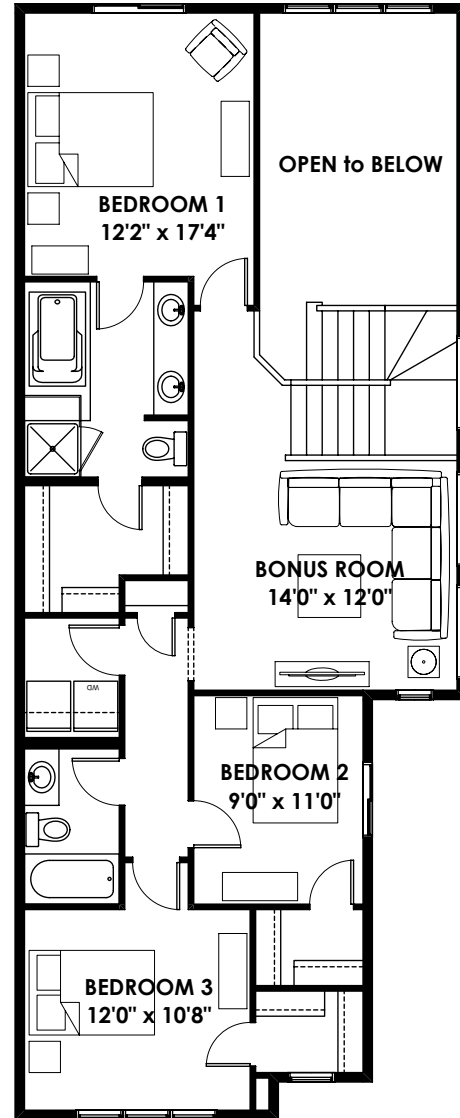
BETTER VALUE BY DESIGN
SINCE 1978 | HOMESBYAVI.COM

Homes by **AVI**

FLOOR PLAN



MAIN
952 SQ FT



UPPER
1,130 SQ FT

For more information or to book an appointment please contact us at **403.536.7215**

Prices are subject to change without notice. Actual floor plan, elevation, and square footage may not be exactly as shown. Square footage is measured to Alberta Building Code (ABC) regulations. Builder reserves the right to make changes without notice. E&OE.

Homes by **AVI**