

QUICK  
POSSESSION

# THE RIDGEWAY

2,159SQ FT | 4 BED | 3 BATH

4844 HAWTHORN BEND SW



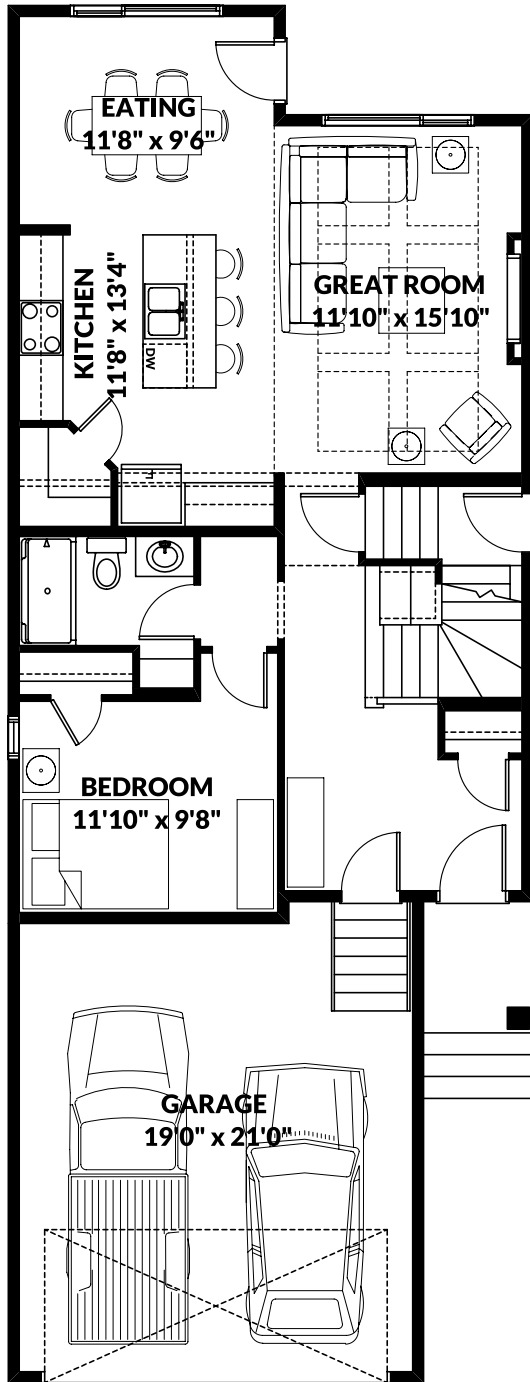
## THIS FRONT DRIVE HOME FEATURES

- Mainfloor bedroom with full bath.
- Custom cabinetry.
- Custom ceiling beams on main floor.
- Side entrance.

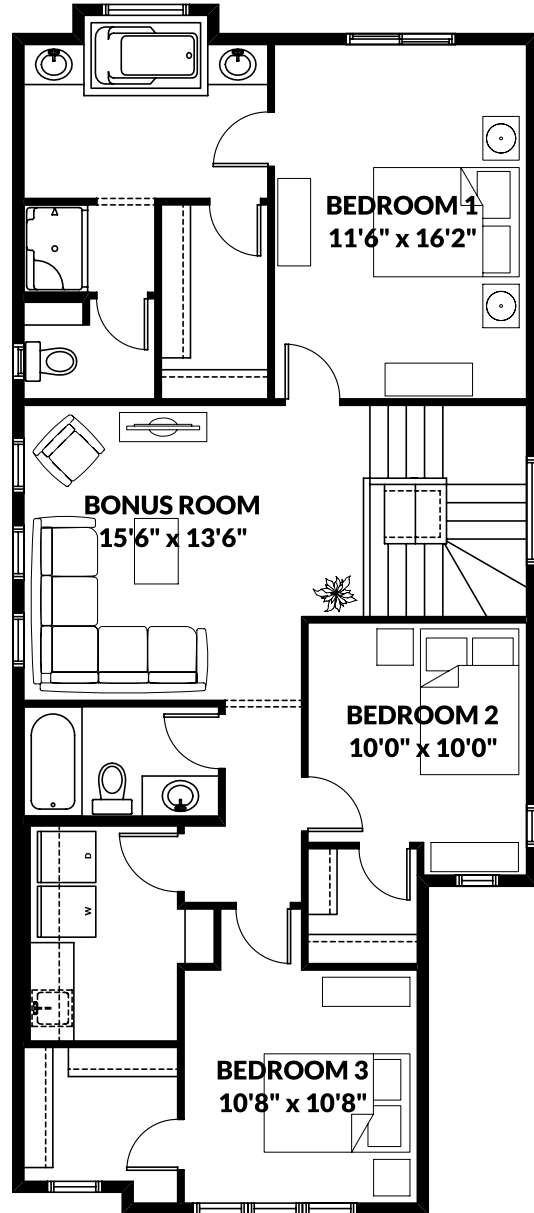
BETTER VALUE BY DESIGN  
SINCE 1978 | HOMESBYAVI.COM

Homes by **AVI**

## FLOOR PLAN



**MAIN**  
940 SQ FT



**UPPER**  
1,219 SQ FT

For more information or to book an appointment please contact us at **587.525.5184**

Prices are subject to change without notice. Actual floor plan, elevation, and square footage may not be exactly as shown. Square footage is measured to Alberta Building Code (ABC) regulations. Builder reserves the right to make changes without notice. E&OE.

Homes by **AVI**