

QUICK  
POSSESSION

# THE GABRIEL

2,023 SQ FT | 3 BED | 2.5 BATH

2255 194 STREET NW



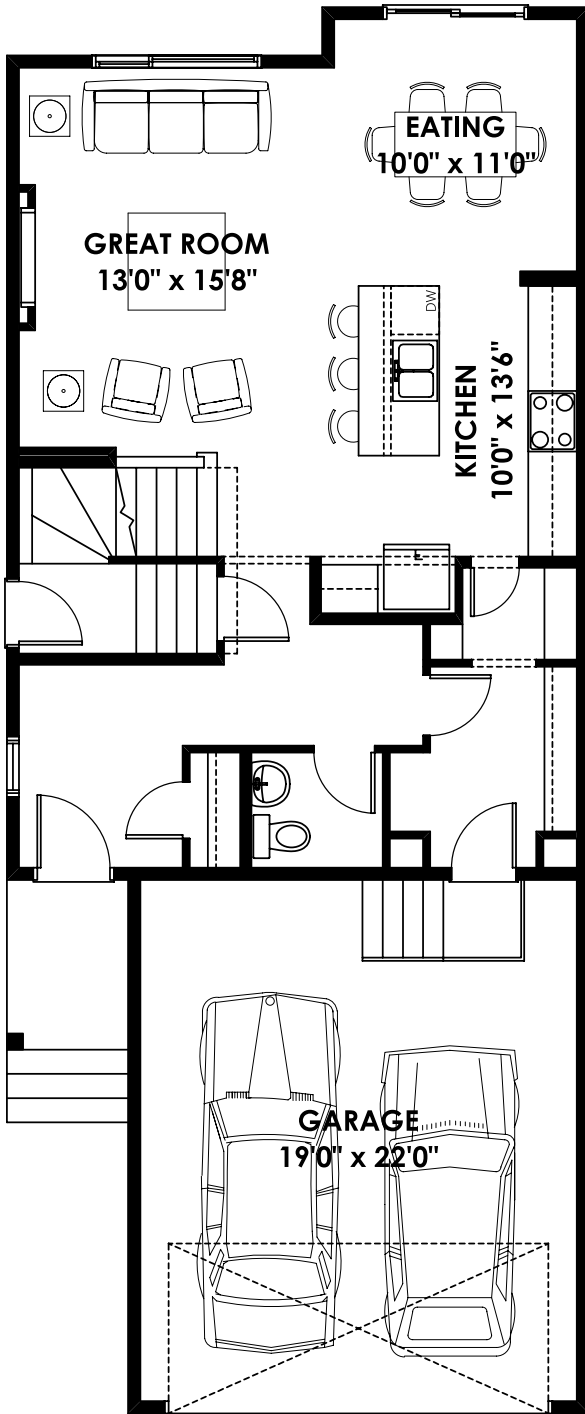
## THIS FRONT DRIVE HOME FEATURES

- Chimney hood fan.
- Quartz throughout the home.
- Fireplace in great room.
- Pocket office on second floor.
- Separate entrance to basement with 9' basement foundation wall height.

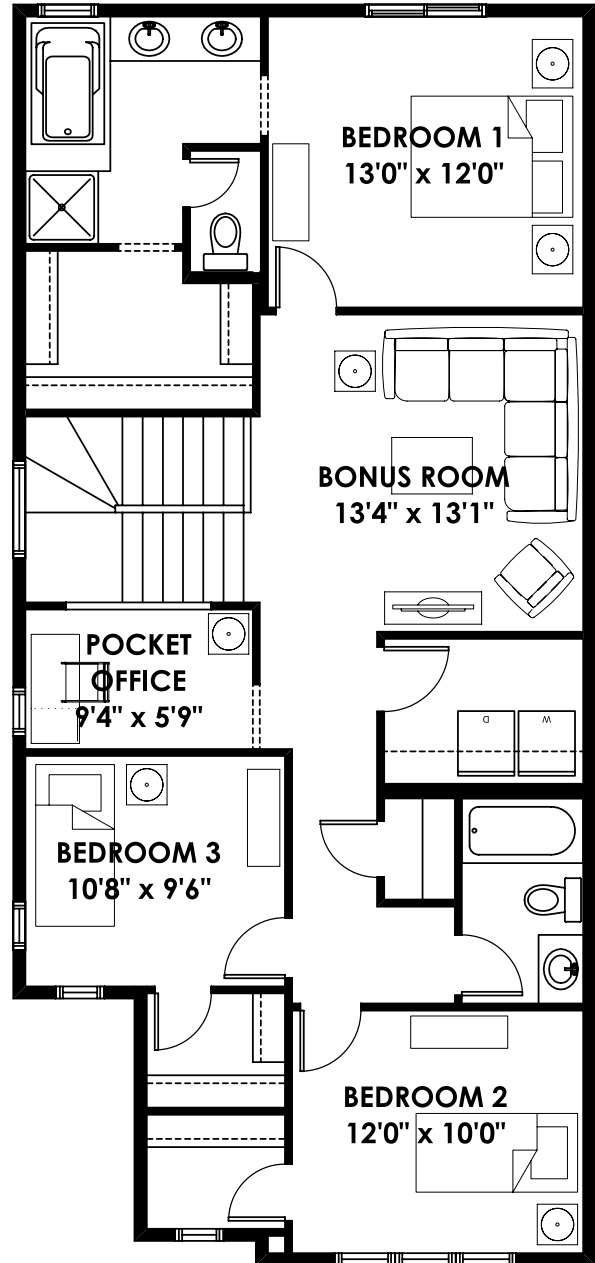
BETTER VALUE BY DESIGN  
SINCE 1978 | HOMESBYAVI.COM

Homes by **AVI**

# FLOOR PLAN



**MAIN**  
838 SQ FT



**UPPER**  
1,185 SQ FT

For more information or to book an appointment please contact us at **587.525.5089**

Prices are subject to change without notice. Actual floor plan, elevation, and square footage may not be exactly as shown. Square footage is measured to Alberta Building Code (ABC) regulations. Builder reserves the right to make changes without notice. E&OE.

Homes by **AVI**