

QUICK
POSSESSION

THE RIDGEWAY

2,158 SQ FT | 3 BED | 3 BATH

4849 HAWTHORN BEND SW



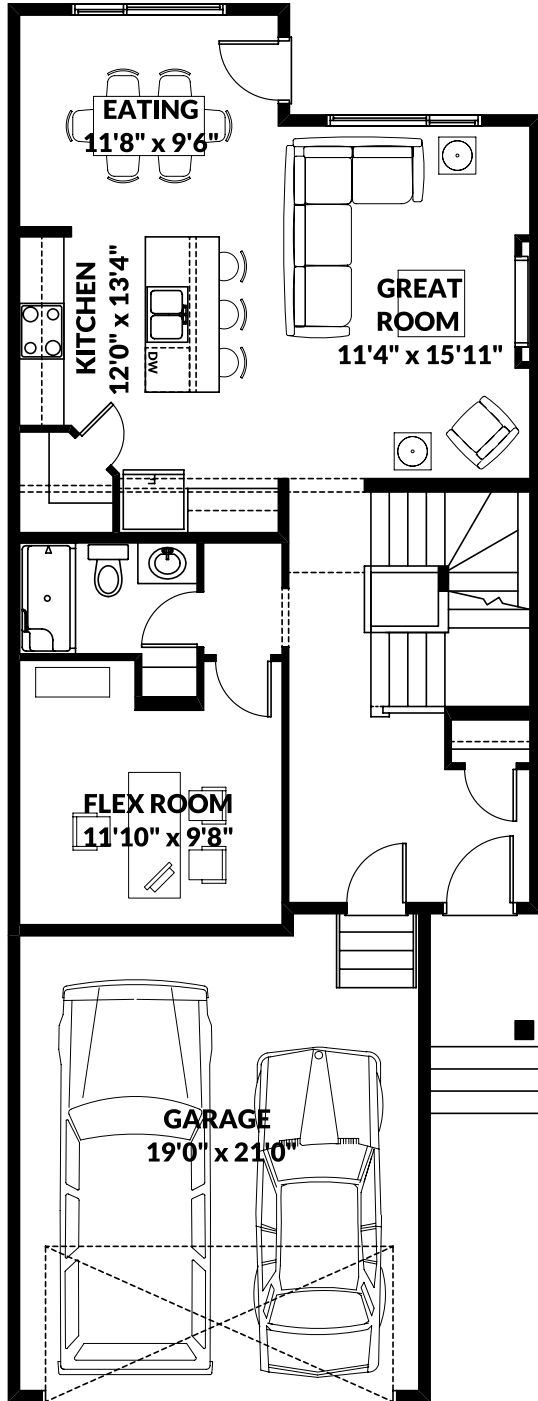
THIS FRONT DRIVE HOME FEATURES

- Main floor flex room with full bath.
- Custom cabinetry.
- Appliance package.
- Side by side laundry.

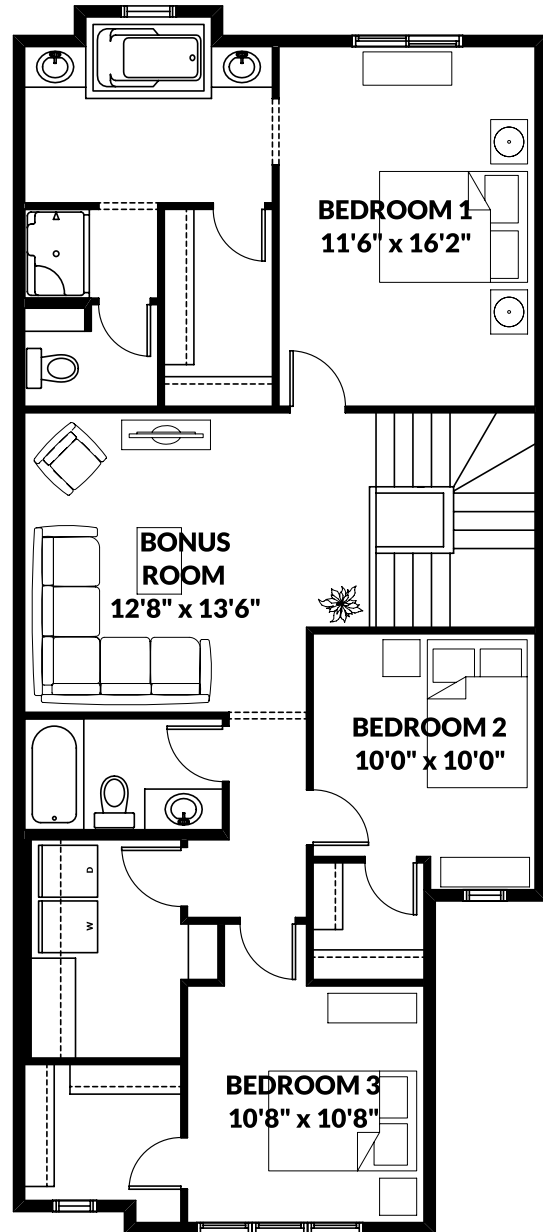
BETTER VALUE BY DESIGN
SINCE 1978 | HOMESBYAVI.COM

Homes by **AVI**

FLOOR PLAN



MAIN
940 SQ FT



UPPER
1,218 SQ FT

For more information or to book an appointment please contact us at **587.525.5184**

Prices are subject to change without notice. Actual floor plan, elevation, and square footage may not be exactly as shown. Square footage is measured to Alberta Building Code (ABC) regulations. Builder reserves the right to make changes without notice. E&OE.

Homes by **AVI**