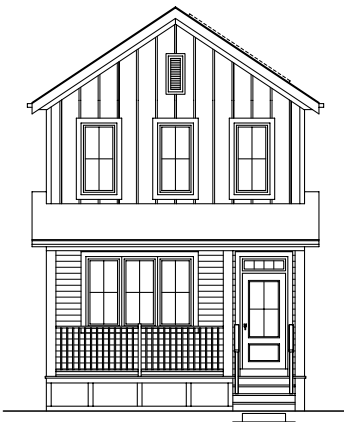


QUICK  
POSSESSION

# THE FINN

1,435 SQ FT | 3 BED | 2.5 BATH

17311 - 2 STREET NW



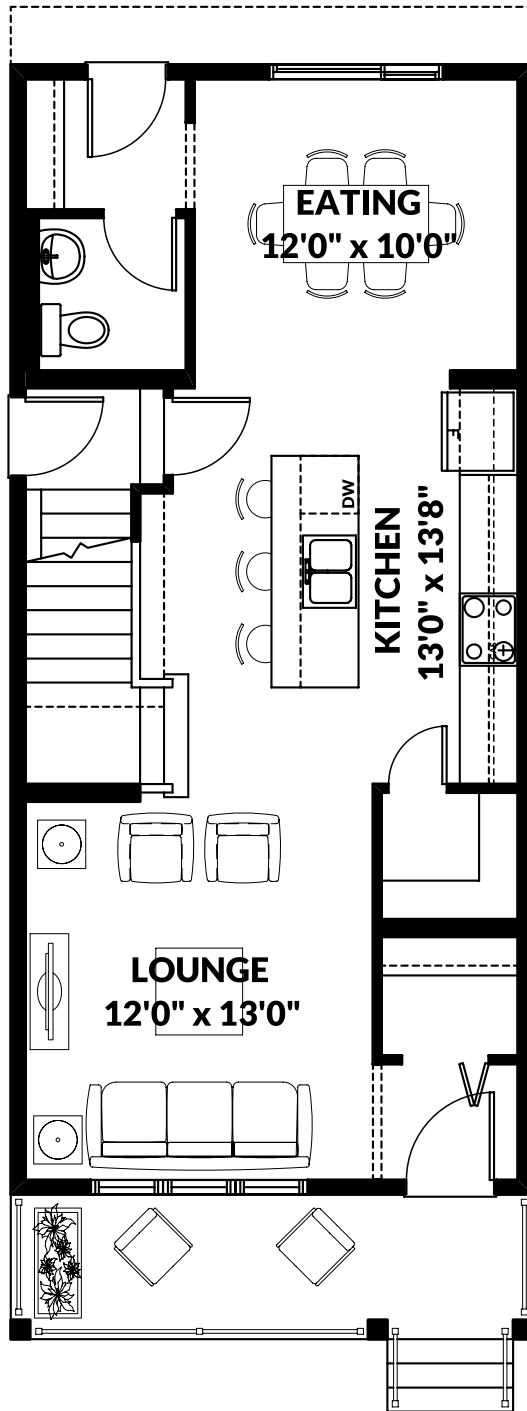
## THIS LANED HOME FEATURES

- Side entrance.
- Front porch.
- Quartz throughout.
- Feature wall with electric fireplace.
- Walk-in pantry.
- Upper laundry room with linen shelves.
- Double sinks in ensuite.

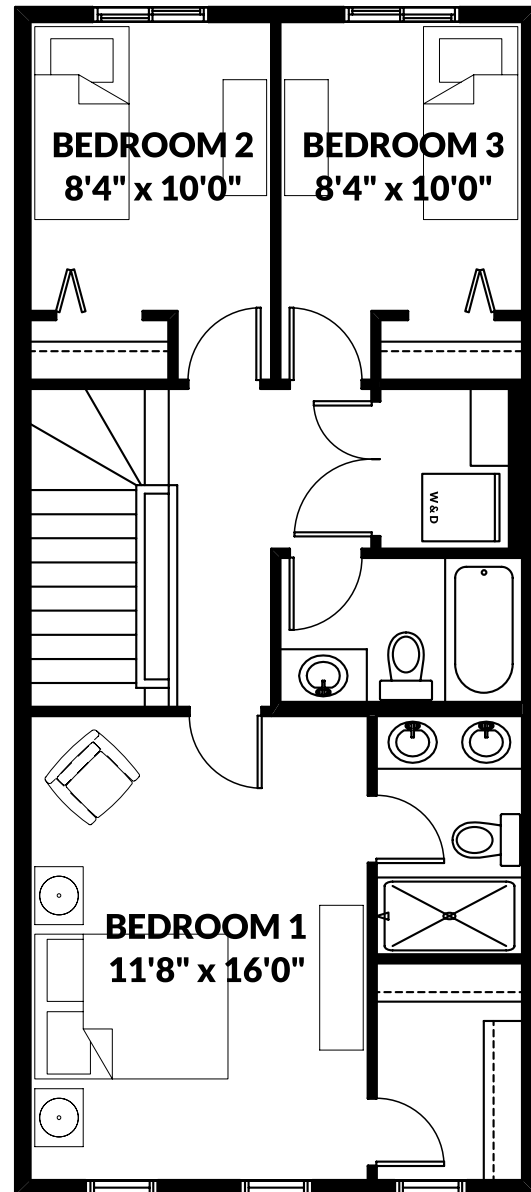
BETTER VALUE BY DESIGN  
SINCE 1978 | HOMESBYAVI.COM

Homes by **AVI**

## FLOOR PLAN



**MAIN**  
702 SQ FT



**UPPER**  
733 SQ FT

For more information or to book an appointment please contact us at **587.525.5079**

Prices are subject to change without notice. Actual floor plan, elevation, and square footage may not be exactly as shown. Square footage is measured to Alberta Building Code (ABC) regulations. Builder reserves the right to make changes without notice. E&OE.

Homes by **AVI**