

QUICK
POSSESSION

THE SASHA

1,543 SQ FT | 3 BED | 2.5 BATH

5118 - 69 STREET, BEAUMONT



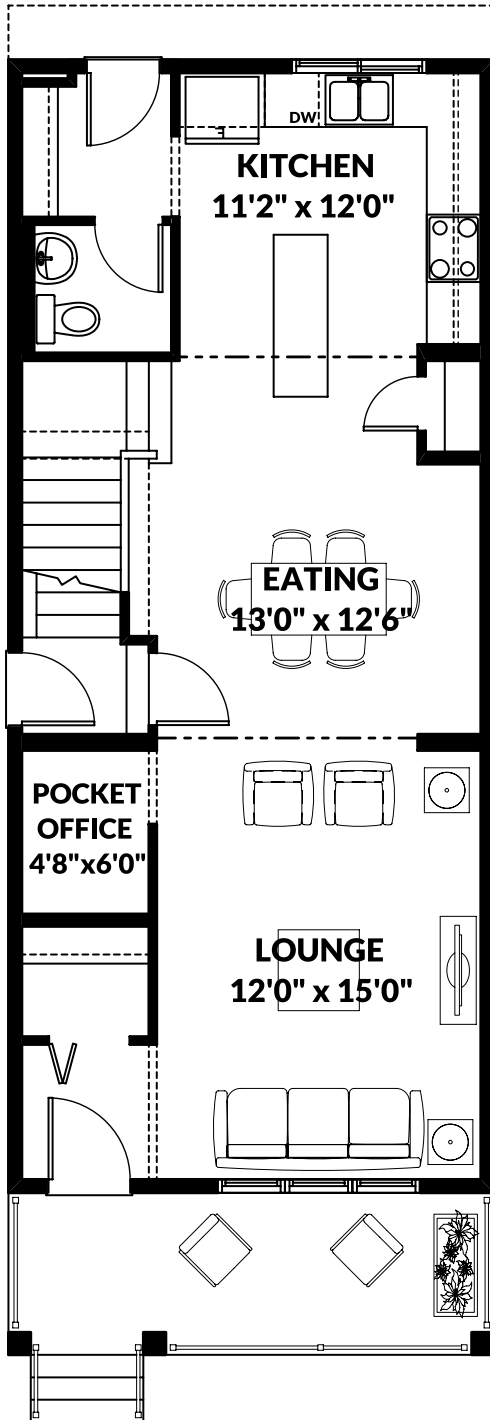
THIS LANED HOME FEATURES

- Double detached garage.
- Side entrance.
- Quartz countertops throughout.
- LVP flooring throughout the main floor.
- Main floor and basement 9' ceilings.
- Double vanity ensuite bath.
- Front landscaping included.

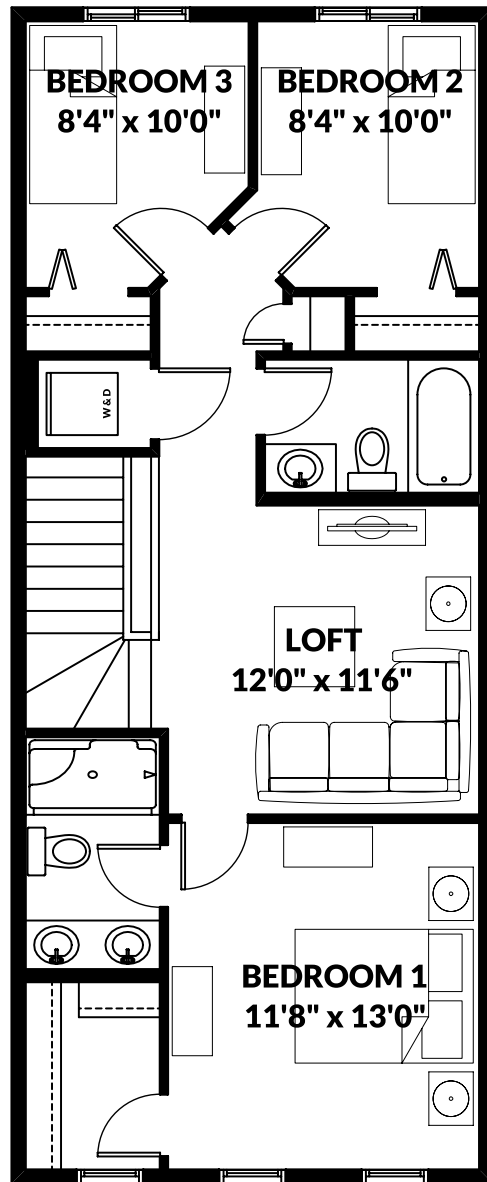
BETTER VALUE BY DESIGN
SINCE 1978 | HOMESBYAVI.COM

Homes by **AVI**

FLOOR PLAN



MAIN
756 SQ FT



UPPER
787 SQ FT

For more information or to book an appointment please contact us at **587.525.5095**

Prices are subject to change without notice. Actual floor plan, elevation, and square footage may not be exactly as shown. Square footage is measured to Alberta Building Code (ABC) regulations. Builder reserves the right to make changes without notice. E&OE.

Homes by **AVI**