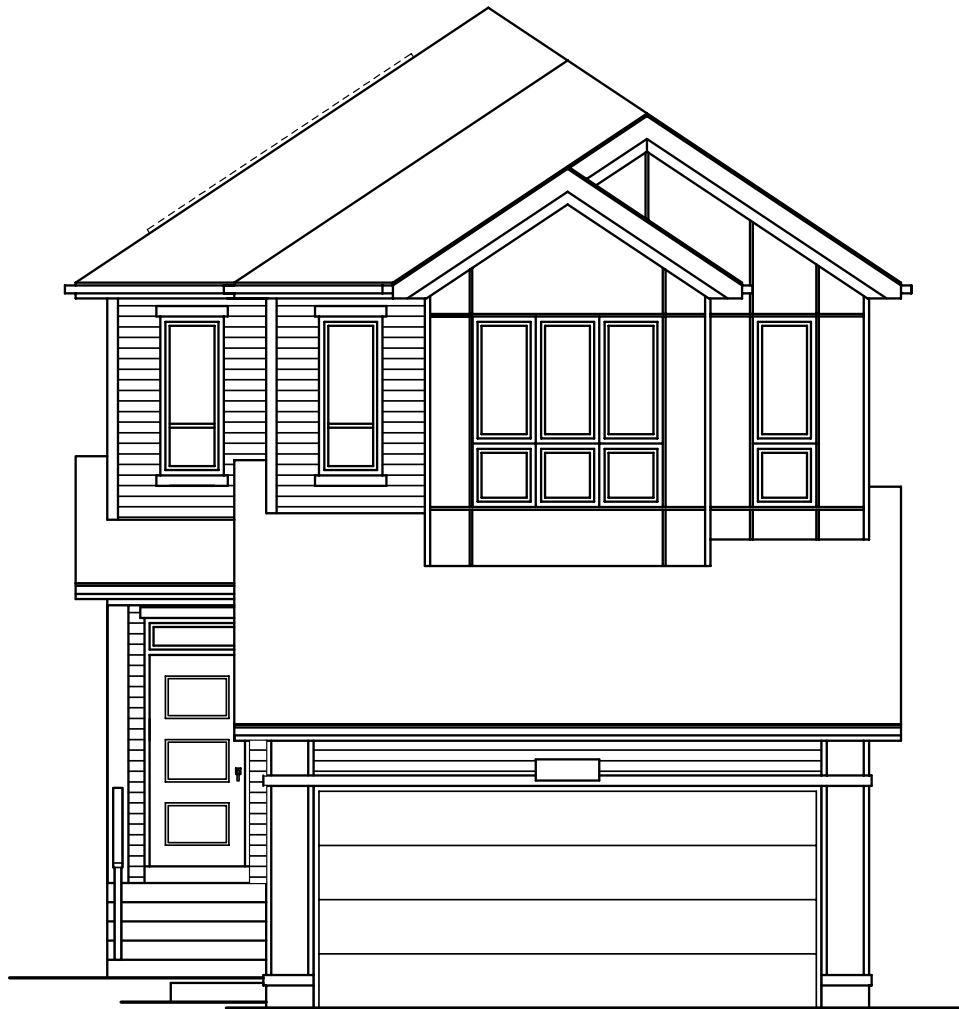


QUICK
POSSESSION

THE GABRIEL

2,032 SQ FT | 3 BED | 2.5 BATH

17335 - 3 STREET NW



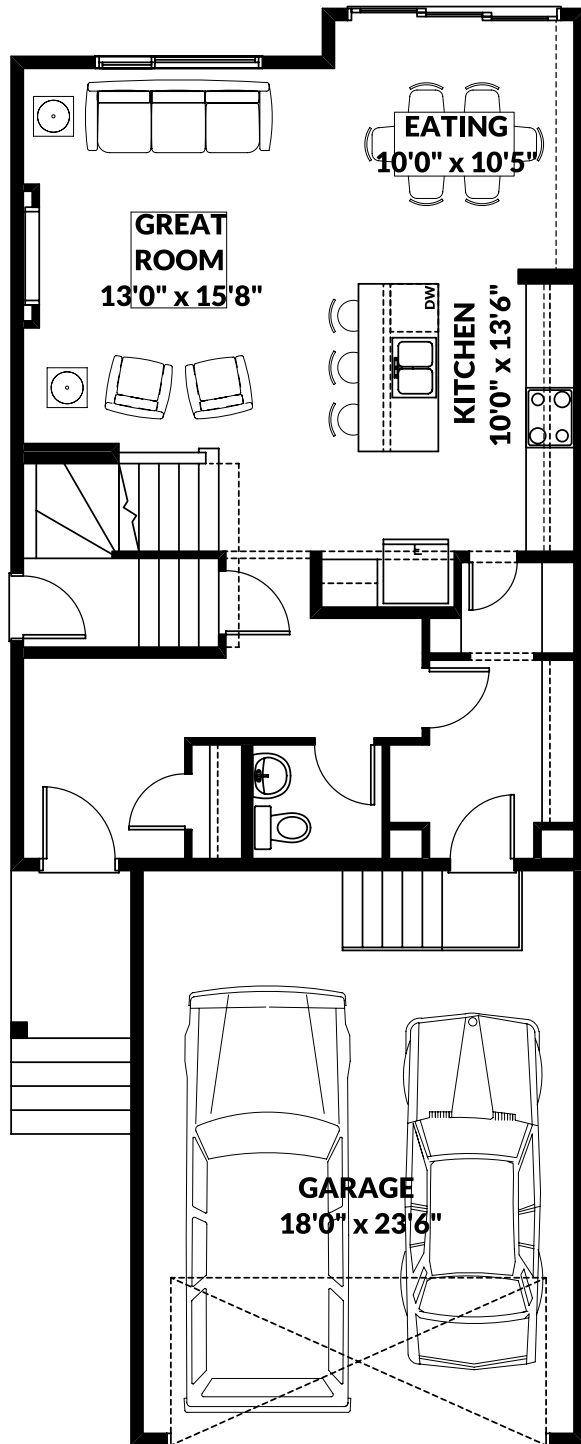
THIS FRONT DRIVE HOME FEATURES

- Across from future park.
- Side entrance.
- Quartz throughout.
- Electric fireplace.
- 5pc ensuite.
- Upper pocket office & bonus room.

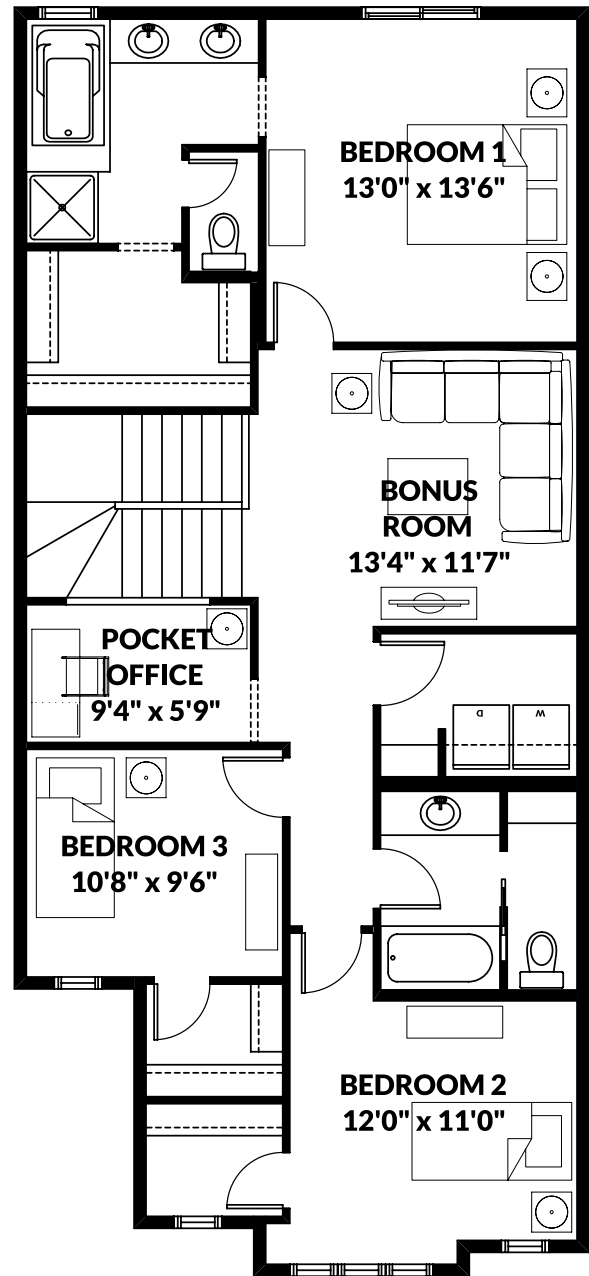
BETTER VALUE BY DESIGN
SINCE 1978 | HOMESBYAVI.COM

Homes by **AVI**

FLOOR PLAN



MAIN
838 SQ FT



UPPER
1,194 SQ FT

For more information or to book an appointment please contact us at **587.525.5079**

Prices are subject to change without notice. Actual floor plan, elevation, and square footage may not be exactly as shown. Square footage is measured to Alberta Building Code (ABC) regulations. Builder reserves the right to make changes without notice. E&OE.

Homes by **AVI**