

QUICK
POSSESSION

THE JEFFERSON

2,343 SQ FT | 3 BED | 2.5 BATH

8409- 228A STREET NW



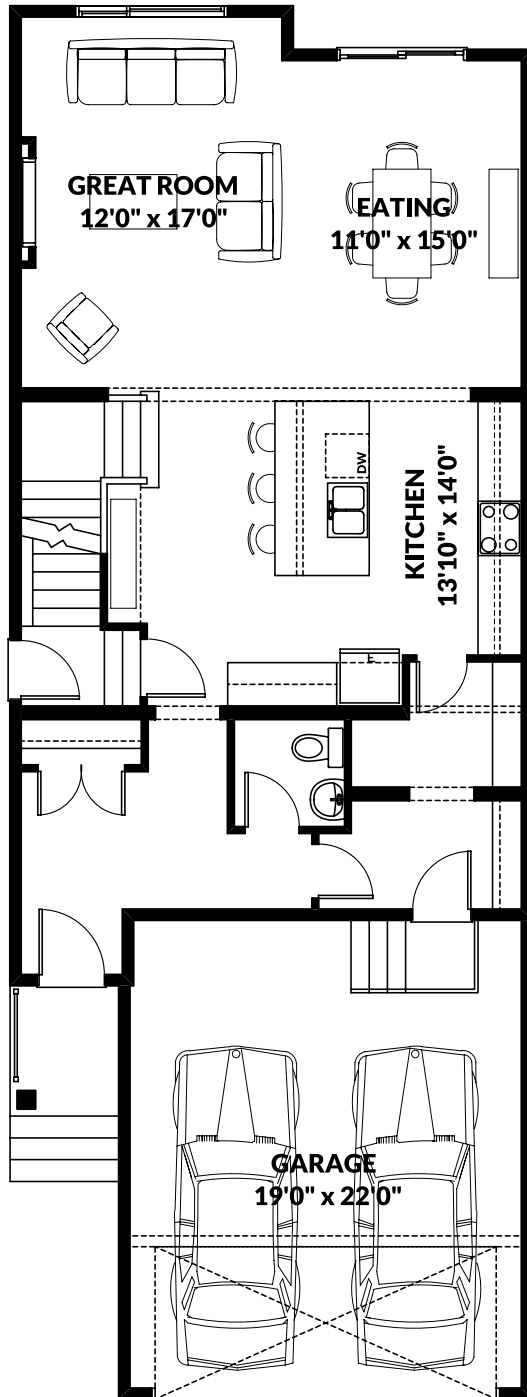
THIS FRONT DRIVE HOME FEATURES

- Pie lot in culdesac.
- Suite possible w/ side entry, 9' basement walls and rough-ins.
- Luxury vinyl plank flooring throughout main floor; luxury vinyl tile in bathrooms and laundry room.
- Quartz countertops w/ silgranit sink in kitchen; quartz w/ undermount sinks in upper floor bathrooms.
- Matte black hardware package.
- Electric fireplace w/ tile surround and mantle in great room
- MDF shelving in pantry and built in bench and hooks in mudroom.

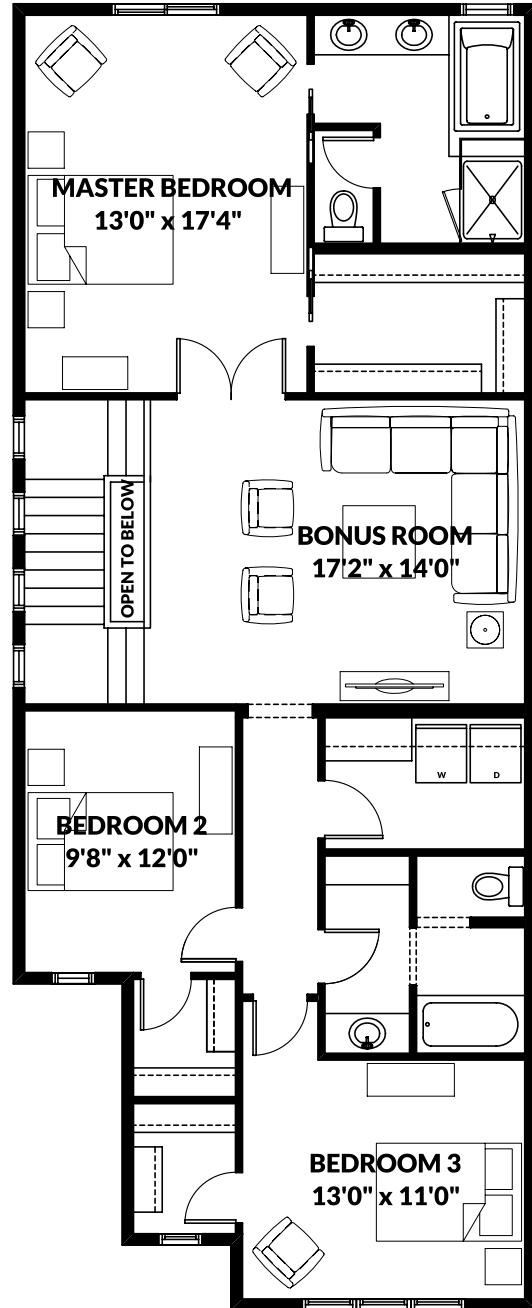
BETTER VALUE BY DESIGN
SINCE 1978 | HOMESBYAVI.COM

Homes by **AVI**

FLOOR PLAN



MAIN
1,003 SQ FT



UPPER
1,340 SQ FT

For more information or to book an appointment please contact us at **587.525.5099**

Prices are subject to change without notice. Actual floor plan, elevation, and square footage may not be exactly as shown. Square footage is measured to Alberta Building Code (ABC) regulations. Builder reserves the right to make changes without notice. E&OE.

Homes by **AVI**