



# FLOOR PLAN

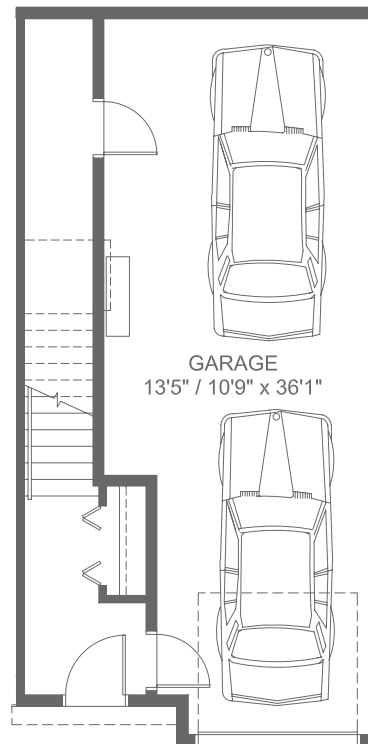
## SLOPE ADAPTIVE

Available in buildings 1, 2, 3, 4, 8, 9, 10, 12 & 13

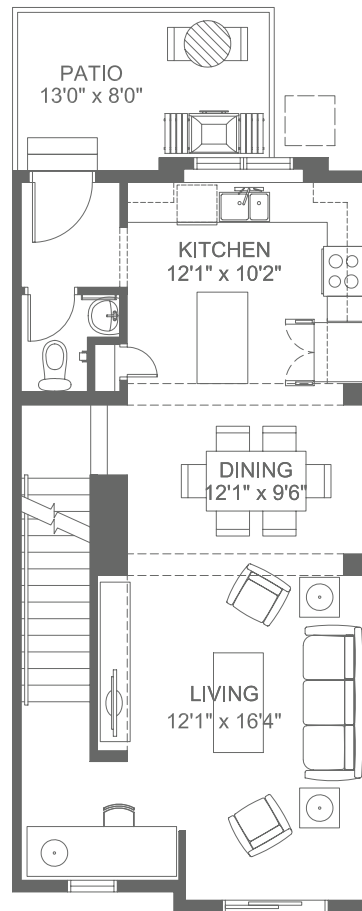
# MAGNOLIA 2.1

3 Bed | 2.5 Bath

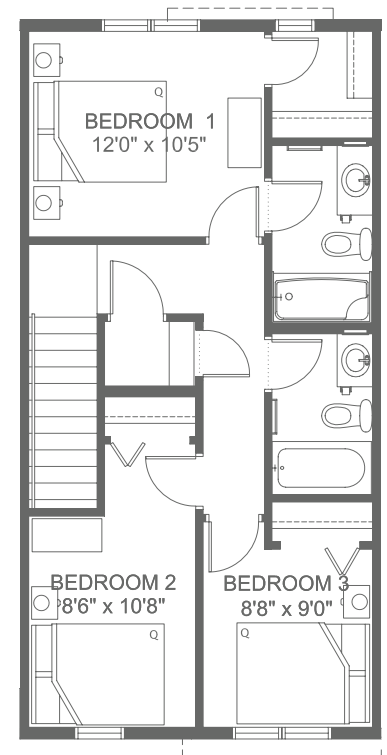
Total: 1,401 SQ FT



Ground Floor  
77 SQ FT



Second Floor  
670 SQ FT



Third Floor  
654 SQ FT

Actual floor plan, elevation, and square footage may not be exactly as shown. Square footage is measured to Alberta Building Code (ABC) regulations. Builder reserves the right to make changes without notice. E&OE.