

FLOOR PLAN

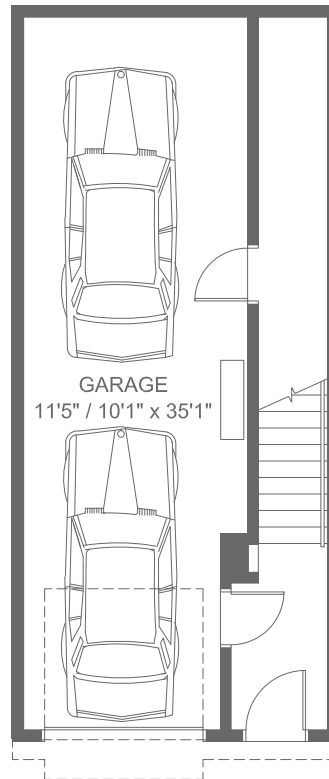
SLOPE ADAPTIVE

Available in buildings 1, 2, 3, 4, & 12

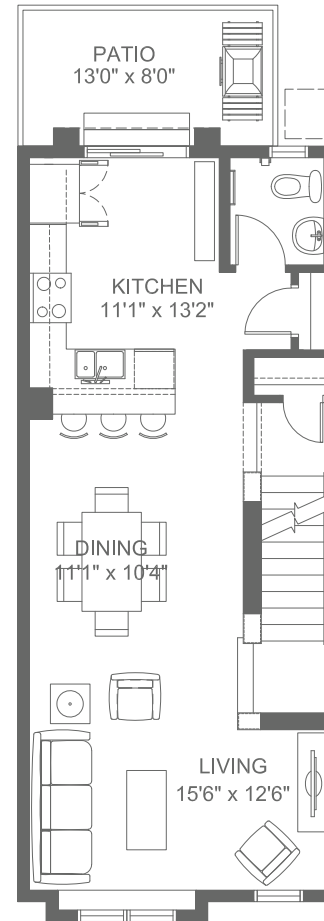
JASMINE 1.1

2 Bed + Den | 2.5 Bath

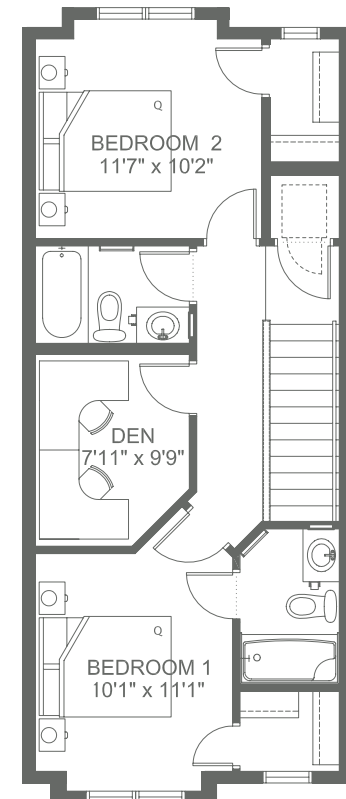
Total: 1,310 SQ FT



Ground Floor
57 SQ FT



Second Floor
622 SQ FT



Third Floor
631 SQ FT

Actual floor plan, elevation, and square footage may not be exactly as shown. Square footage is measured to Alberta Building Code (ABC) regulations. Builder reserves the right to make changes without notice. E&OE.