

QUICK
POSSESSION

THE MESA

2,361 SQ FT | 3 BED | 2.5 BATH

45 RHEA CRESCENT, ST. ALBERT



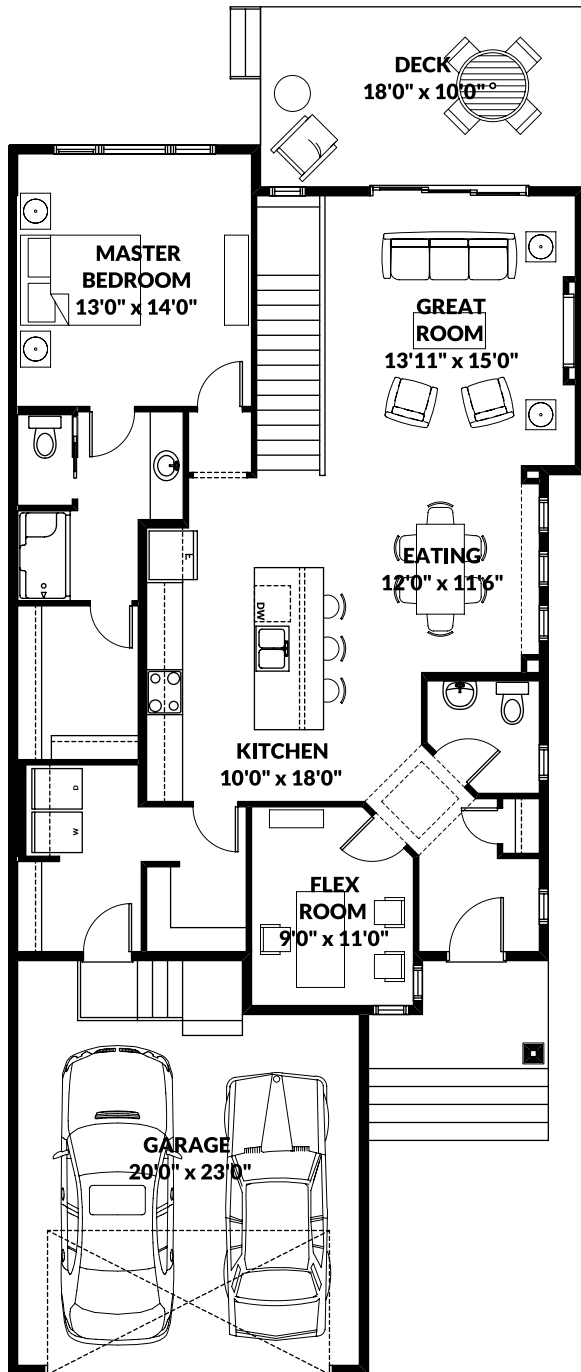
THIS BUNGALOW VILLA HOME FEATURES

- 10'x18' deck included.
- Front and rear landscaping included.
- 1 year yard maintenance and ice/snow removal included.
- 23' deep double attached garage.
- Fully finished basement with 9' ceilings.
- dual zone heat for both levels.
- Main floor laundry.

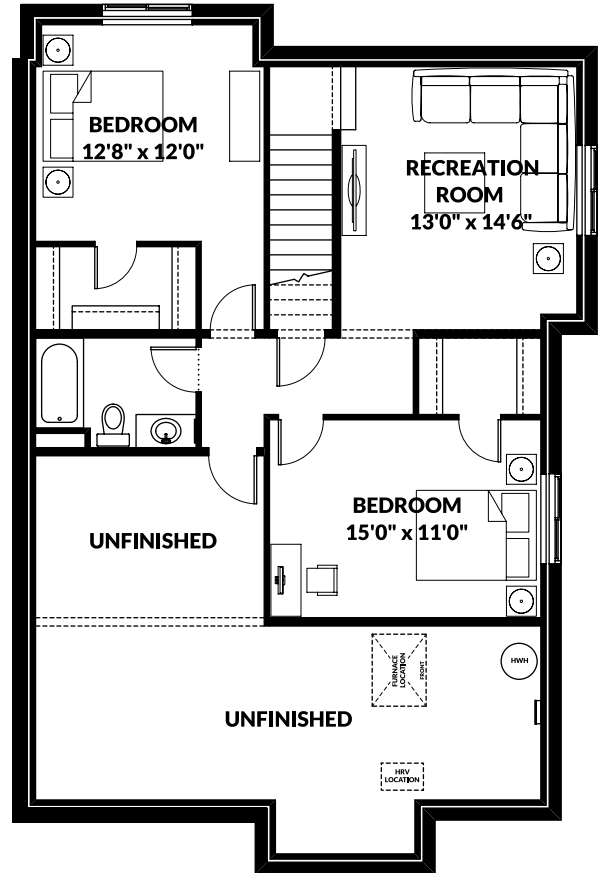
BETTER VALUE BY DESIGN
SINCE 1978 | HOMESBYAVI.COM

Homes by **AVI**

FLOOR PLAN



MAIN
1,385 SQ FT



BASEMENT
976 SQ FT
FINISHED AREA

For more information or to book an appointment please contact us at **587.525.5101**

Prices are subject to change without notice. Actual floor plan, elevation, and square footage may not be exactly as shown. Square footage is measured to Alberta Building Code (ABC) regulations. Builder reserves the right to make changes without notice. E&OE.

Homes by **AVI**