

QUICK
POSSESSION

THE MESA

2,306SQ FT | 2 BED | 2.5 BATH

187 REDWING WYND, ST. ALBERT



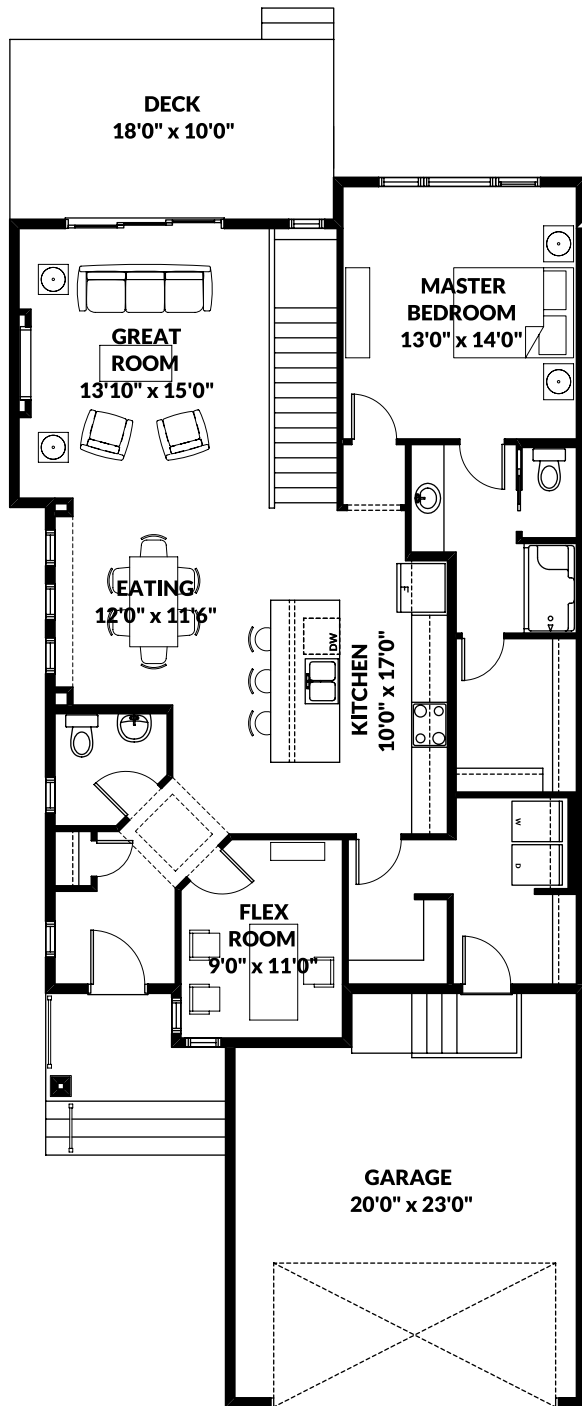
THIS BUNGALOW VILLA HOME FEATURES

- Large pie shaped lot.
- 10'x18' deck included.
- Fully finished basement with 9' ceiling.
- Dual zone heating.
- 23' deep attached garage.
- Front and rear landscaping included.
- 1 year front and rear yard maintenance and ice snow removal.

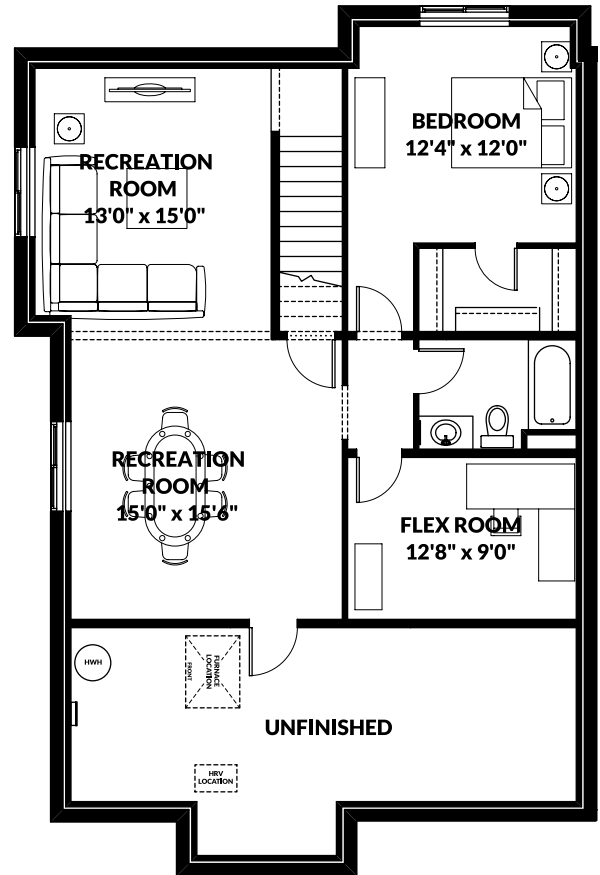
BETTER VALUE BY DESIGN
SINCE 1978 | HOMESBYAVI.COM

Homes by **AVI**

FLOOR PLAN



MAIN
1,385 SQ FT



BASEMENT
921 SQ FT
FINISHED AREA

For more information or to book an appointment please contact us at **587.525.5101**

Prices are subject to change without notice. Actual floor plan, elevation, and square footage may not be exactly as shown. Square footage is measured to Alberta Building Code (ABC) regulations. Builder reserves the right to make changes without notice. E&OE.

Homes by **AVI**