

QUICK
POSSESSION

THE HEMSWORTH

2,067 SQ FT | 4 BED | 3 BATH

4847 HAWTHORN BEND, SW



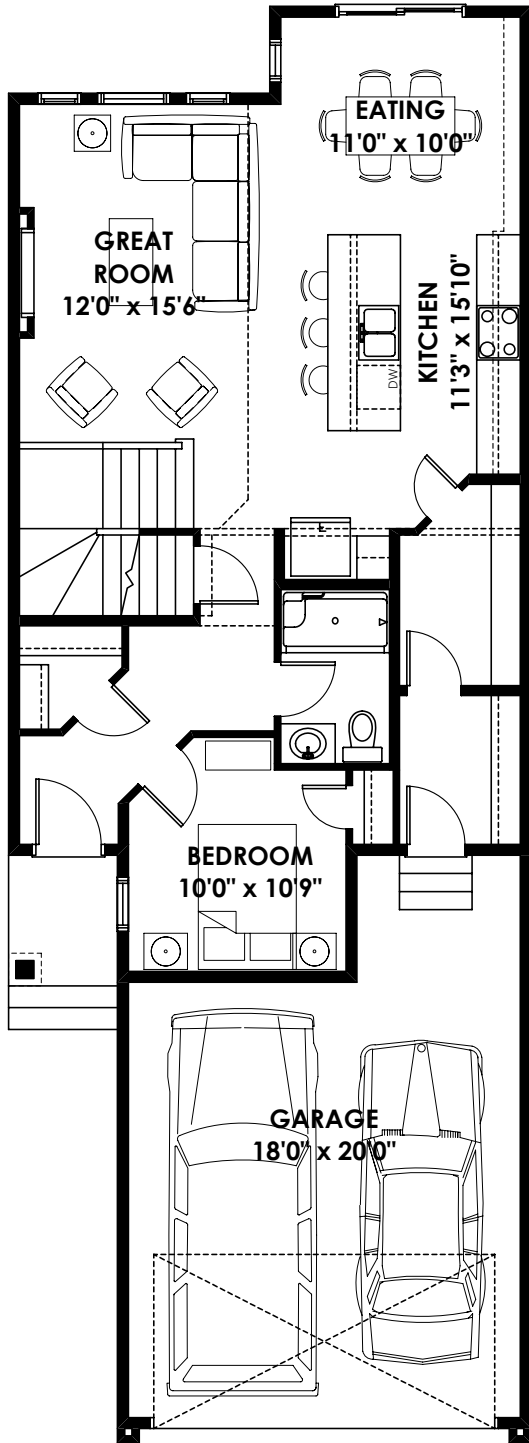
THIS FRONT DRIVE HOME FEATURES

- NE facing.
- Iron spindle railing.
- Quartz countertops throughout.
- LVP throughout the main floor.
- Front and back landscaping.

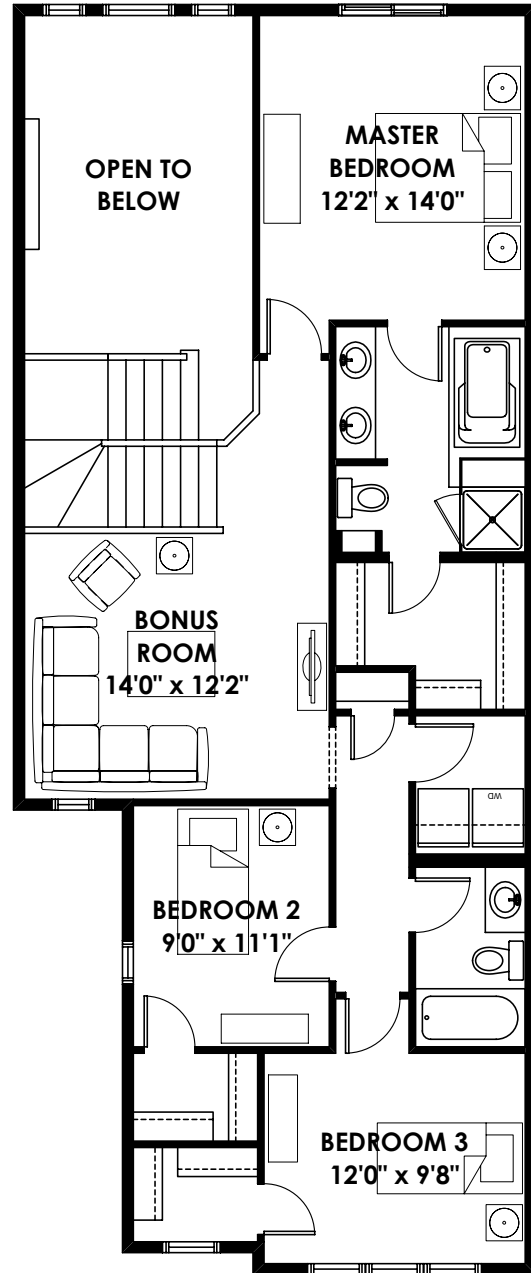
BETTER VALUE BY DESIGN
SINCE 1978 | HOMESBYAVI.COM

Homes by **AVI**

FLOOR PLAN



MAIN
952 SQ FT



UPPER
1,115 SQ FT

For more information or to book an appointment please contact us at **587.525.5184**

Prices are subject to change without notice. Actual floor plan, elevation, and square footage may not be exactly as shown. Square footage is measured to Alberta Building Code (ABC) regulations. Builder reserves the right to make changes without notice. E&OE.

Homes by **AVI**