

QUICK  
POSSESSION

# THE HEMSWORTH

2,053 SQ FT | 3 BED | 2.5 BATH

95 ROYAL STREET, ST. ALBERT



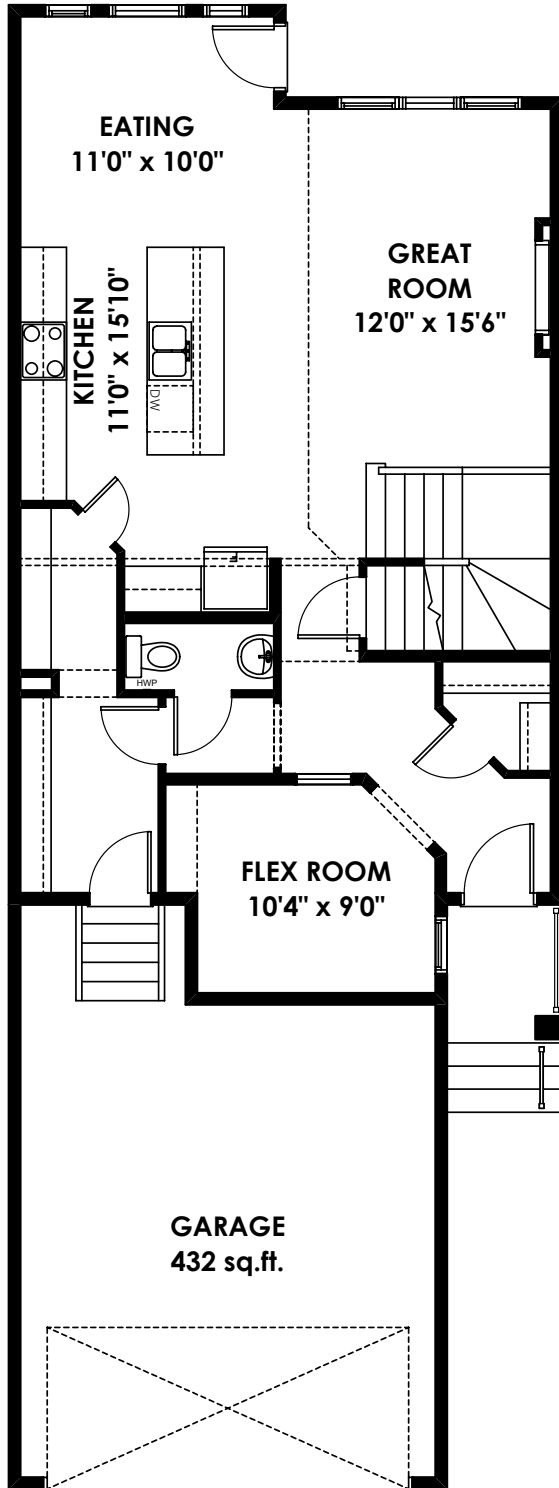
## THIS FRONT DRIVE HOME FEATURES

- 18' living room ceiling.
- 5 piece ensuite.
- Upper floor laundry.
- 9' kitchen island.
- Walk-in closets in all bedrooms.
- Electric fireplace with tile surround.

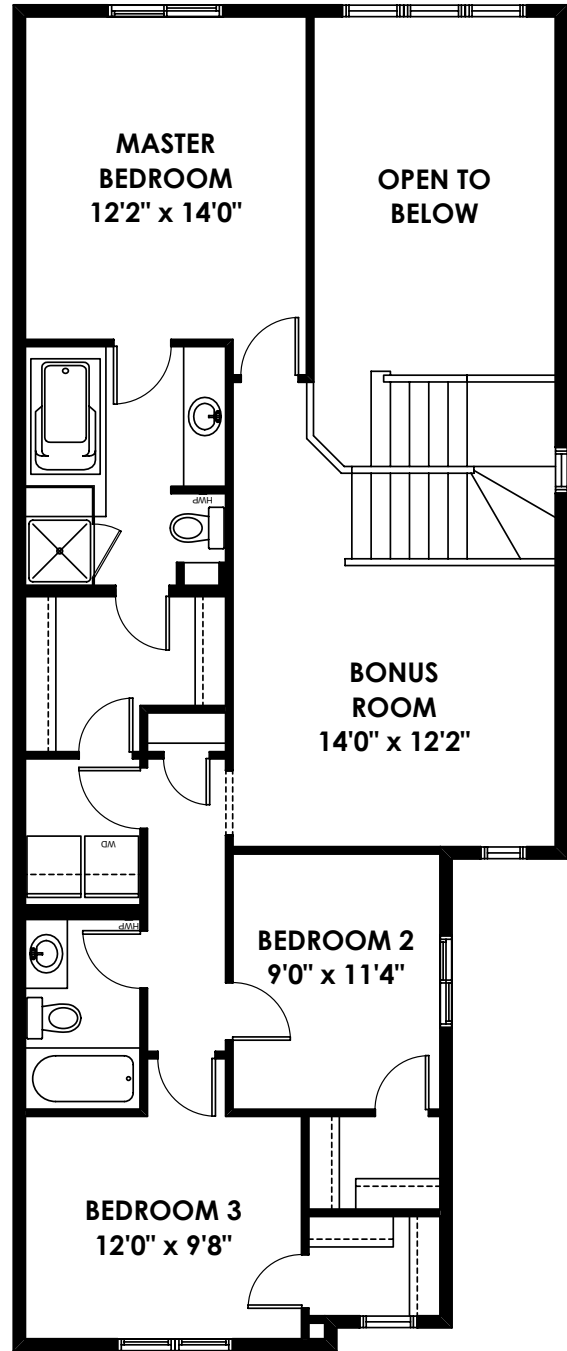
BETTER VALUE BY DESIGN  
SINCE 1978 | HOMESBYAVI.COM

Homes by **AVI**

## FLOOR PLAN



**MAIN**  
937 SQ FT



**UPPER**  
1,116 SQ FT

For more information or to book an appointment please contact us at **587.525.5092**

Prices are subject to change without notice. Actual floor plan, elevation, and square footage may not be exactly as shown. Square footage is measured to Alberta Building Code (ABC) regulations. Builder reserves the right to make changes without notice. E&OE.

Homes by **AVI**