

QUICK
POSSESSION

THE HEMSWORTH

2,020 SQ FT | 4 BED | 3 BATH

4860 HAWTHORN BEND, SW



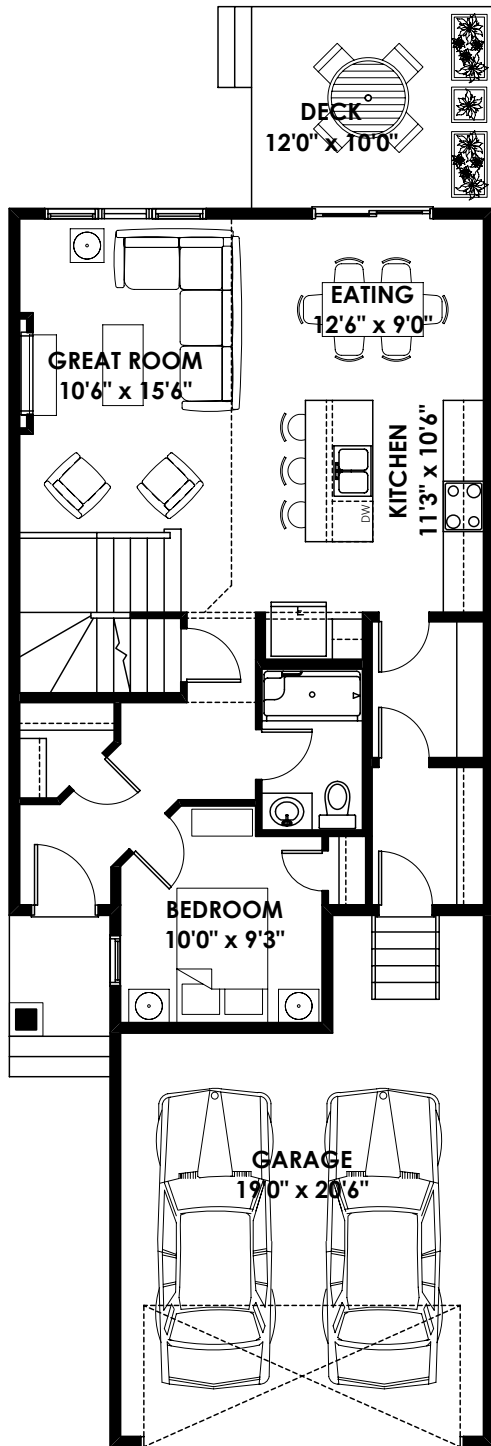
THIS FRONT DRIVE HOME FEATURES

- West facing.
- Front and back landscaping.
- Main floor bedroom with full washroom.
- Quartz countertops throughout.
- Iron spindle railing.
- LVP throughout main floor.

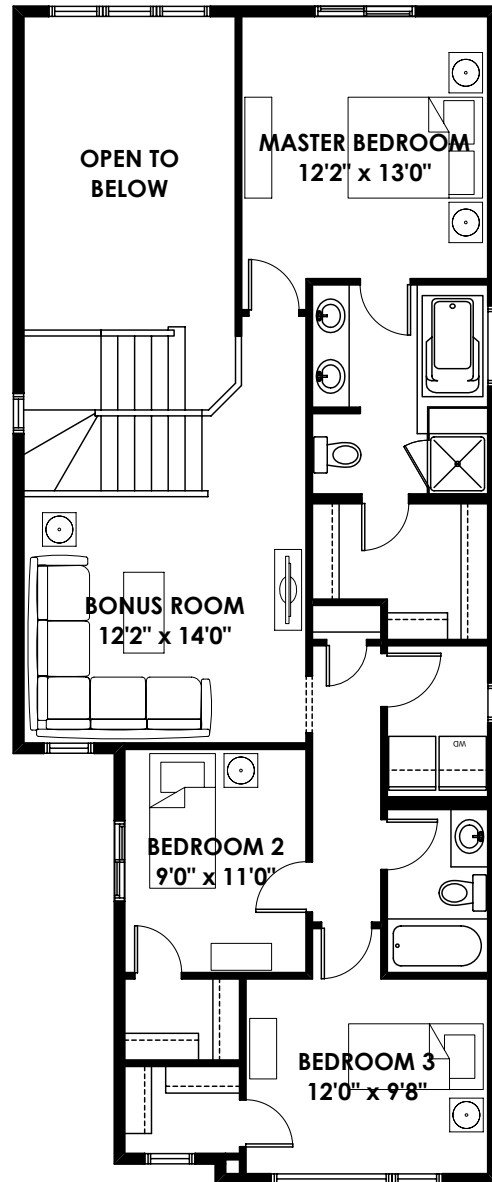
BETTER VALUE BY DESIGN
SINCE 1978 | HOMESBYAVI.COM

Homes by **AVI**

FLOOR PLAN



MAIN
904 SQ FT



UPPER
1,116 SQ FT

For more information or to book an appointment please contact us at **587.525.5184**

Prices are subject to change without notice. Actual floor plan, elevation, and square footage may not be exactly as shown. Square footage is measured to Alberta Building Code (ABC) regulations. Builder reserves the right to make changes without notice. E&OE.

Homes by **AVI**