

QUICK
POSSESSION

THE HEMSWORTH

2,222 SQ FT | 4 BED | 2.5 BATH

54 RIVERHILL CRESCENT, ST. ALBERT



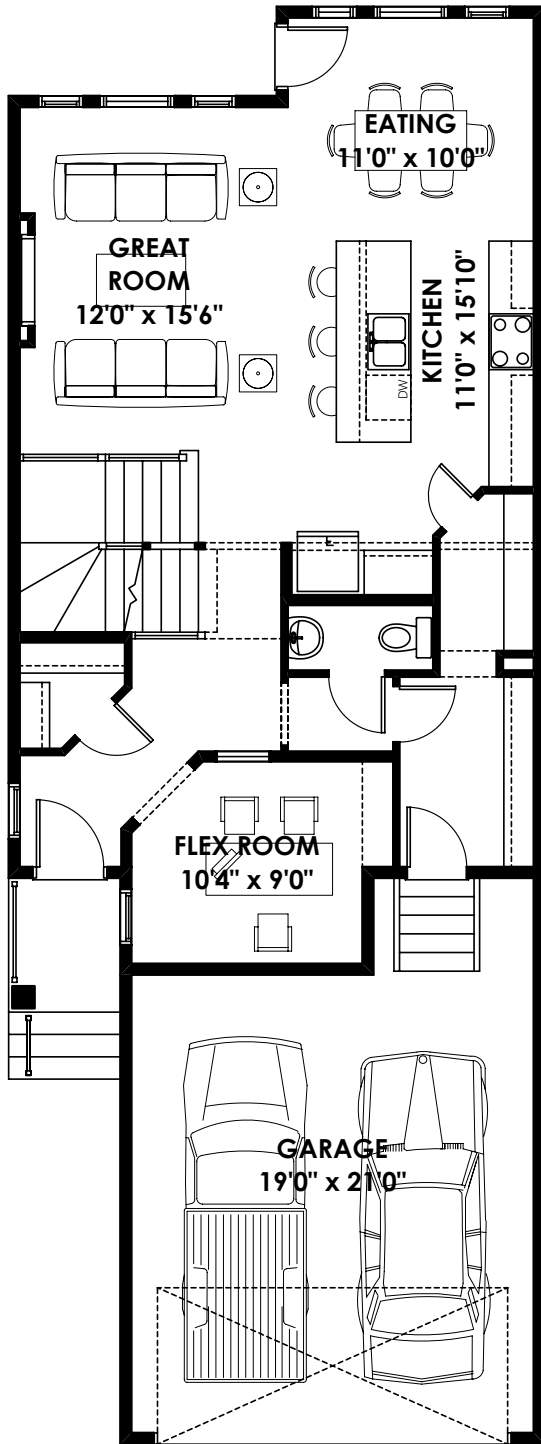
THIS FRONT DRIVE HOME FEATURES

- 5 piece ensuite.
- Upper floor laundry.
- Garage floor drain.
- 9' kitchen island.
- Walk-in closets in all bedrooms.
- Electric fireplace with feature wall.

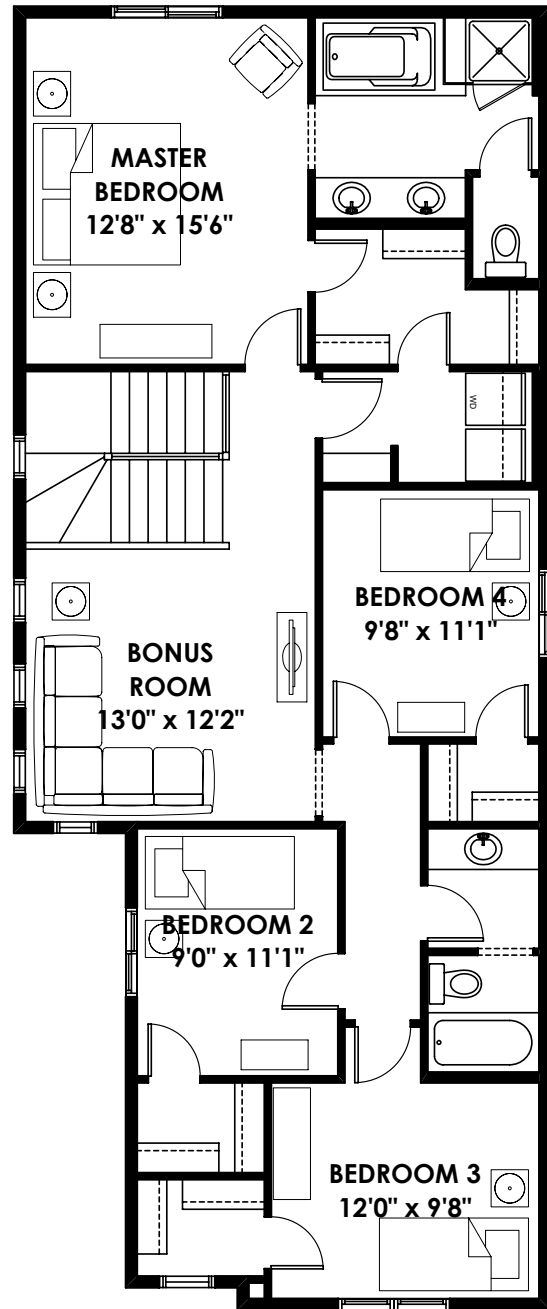
BETTER VALUE BY DESIGN
SINCE 1978 | HOMESBYAVI.COM

Homes by **AVI**

FLOOR PLAN



MAIN
937 SQ FT



UPPER
1,285 SQ FT

For more information or to book an appointment please contact us at **587.525.5092**

Prices are subject to change without notice. Actual floor plan, elevation, and square footage may not be exactly as shown. Square footage is measured to Alberta Building Code (ABC) regulations. Builder reserves the right to make changes without notice. E&OE.

Homes by **AVI**