

QUICK
POSSESSION

THE JEFFERSON

2,353 SQ FT | 3 BED | 2.5 BATH

170 VERITY MANOR SW



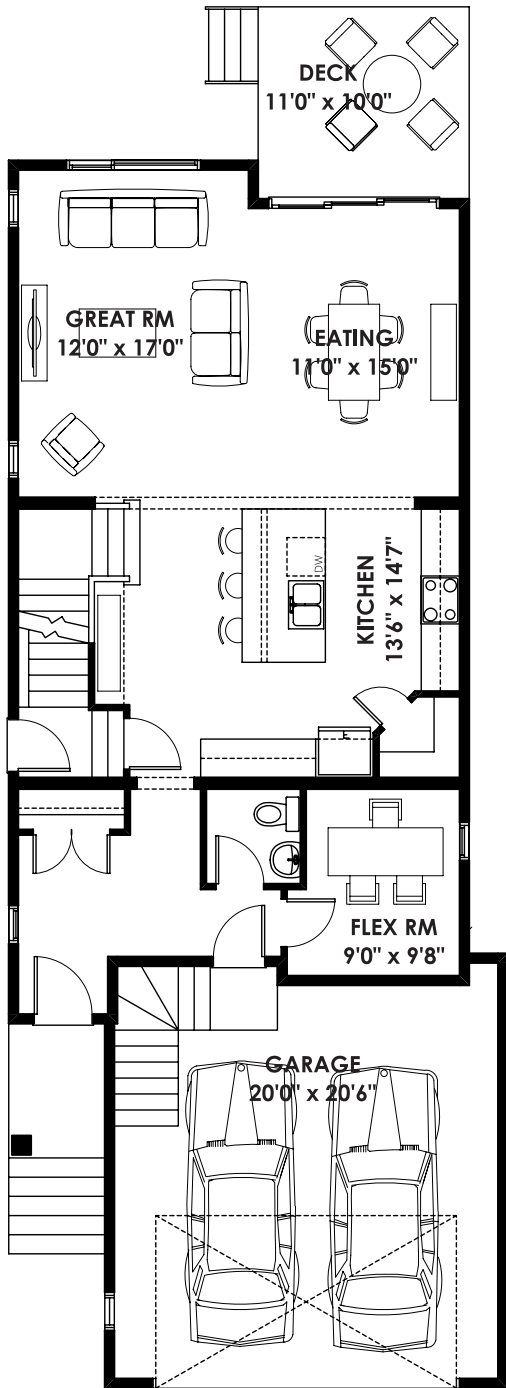
THIS FRONT DRIVE HOME FEATURES

- Corner lot with south-facing backyard
- 3 section 8' patio door to rear deck
- 9' basement foundation
- Additional triple pane windows throughout the home
- 3 windows in the basement to allow for a future 2 bedroom basement development and 3rd window located in rec room

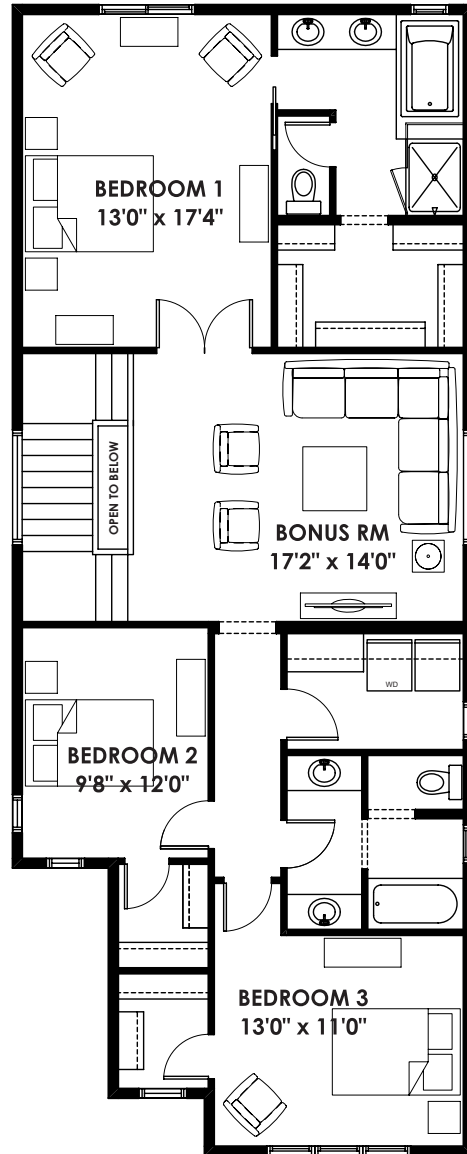
BETTER VALUE BY DESIGN
SINCE 1978 | HOMESBYAVI.COM

Homes by **AVI**

FLOOR PLAN



MAIN
1,013 SQ FT



UPPER
1,340 SQ FT

For more information or to book an appointment please contact us at **403.536.7193**

Prices are subject to change without notice. Actual floor plan, elevation, and square footage may not be exactly as shown. Square footage is measured to Alberta Building Code (ABC) regulations. Builder reserves the right to make changes without notice. E&OE.

Homes by **AVI**