

QUICK  
POSSESSION

# THE JEFFERSON

2,361 SQ FT | 4 BED | 3 BATH

55 MALLARD HEATH



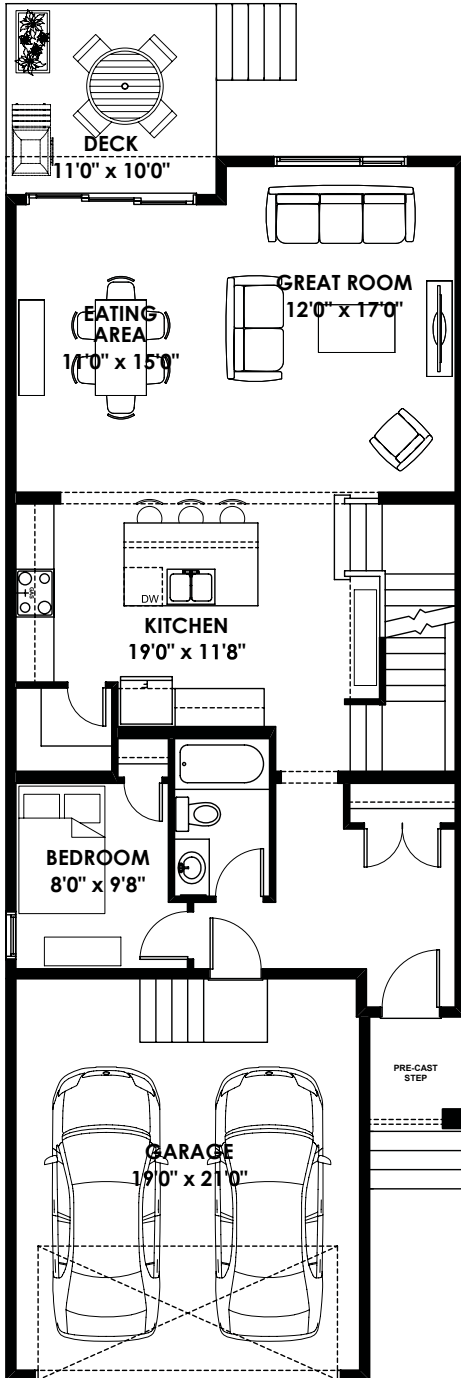
## THIS FRONT DRIVE HOME FEATURES

- Convenient main floor bedroom and full bathroom
- Very spacious and bright primary bedroom
- Added 110 square foot deck
- 9' basement foundation
- Second sink to master ensuite
- Spacious upper floor bonus room

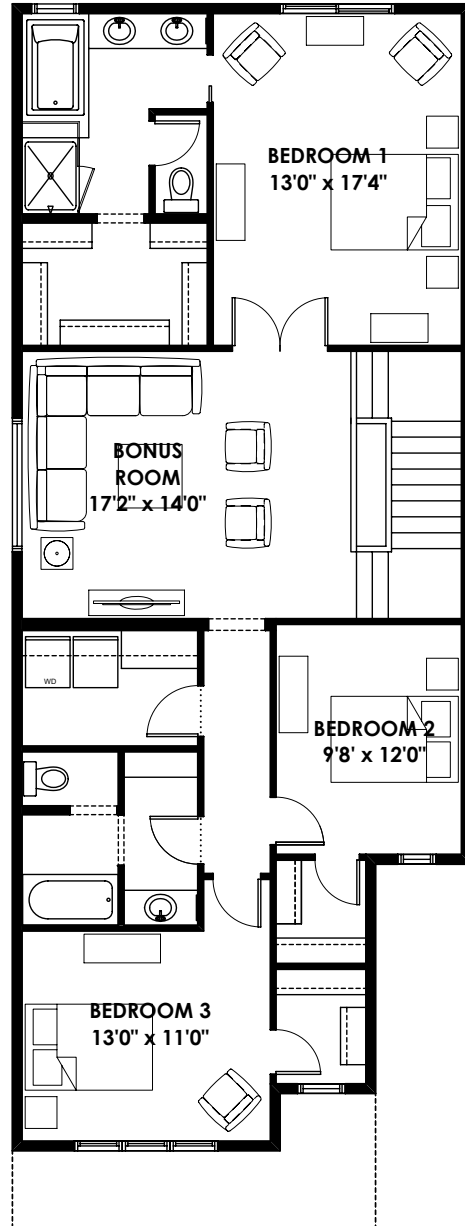
BETTER VALUE BY DESIGN  
SINCE 1978 | HOMESBYAVI.COM

Homes by **AVI**

# FLOOR PLAN



**MAIN**  
1,021 SQ FT



**UPPER**  
1,340 SQ FT

For more information or to book an appointment please contact us at **403.536.7189**

Prices are subject to change without notice. Actual floor plan, elevation, and square footage may not be exactly as shown. Square footage is measured to Alberta Building Code (ABC) regulations. Builder reserves the right to make changes without notice. E&OE.

Homes by **AVI**