

18'

THE FINLEY

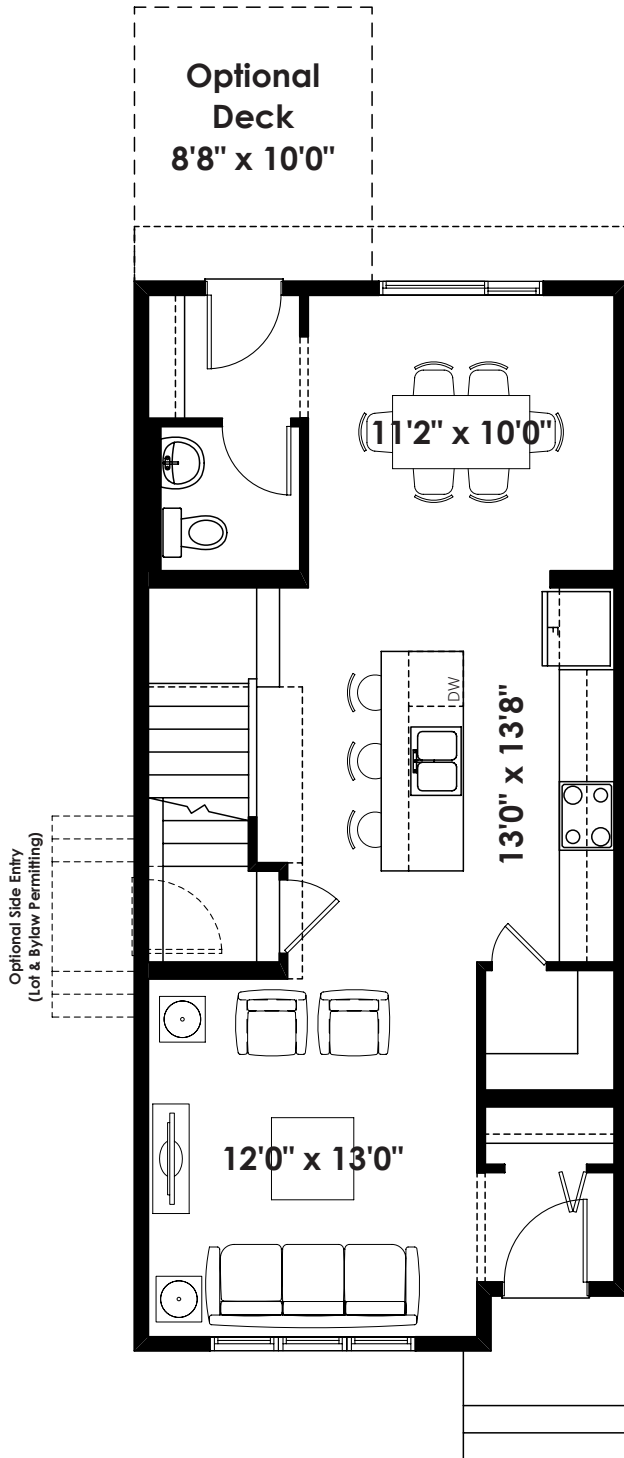
1,409+ SQ FT | 3 BED | 2.5 BATH



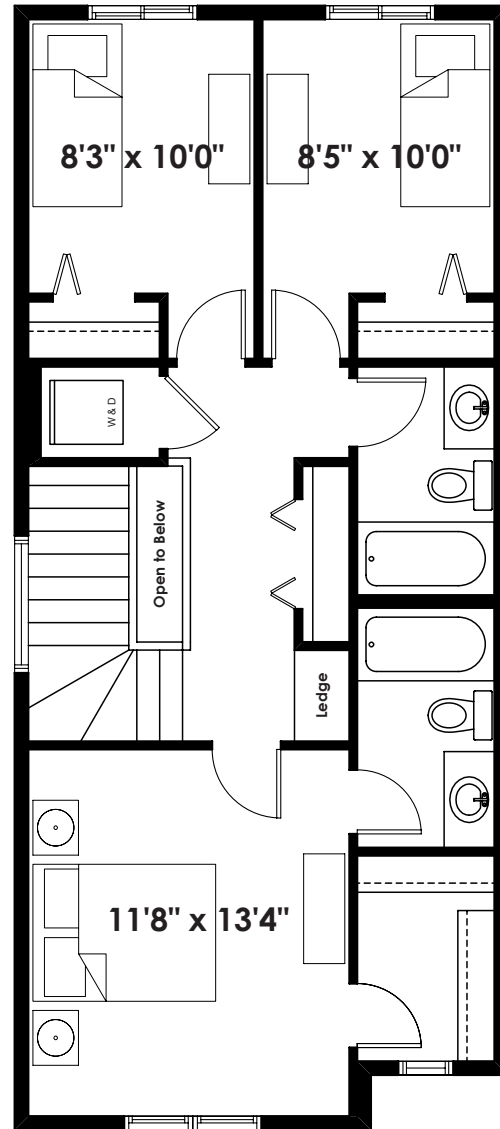
BETTER VALUE BY DESIGN
SINCE 1978 | HOMESBYAVI.COM

Homes by **AVI**

BASE FLOOR PLAN

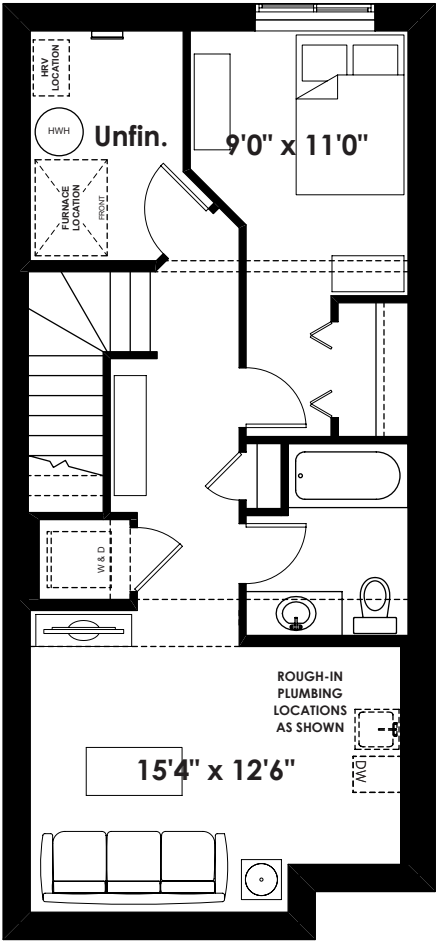


MAIN
692 SQ FT

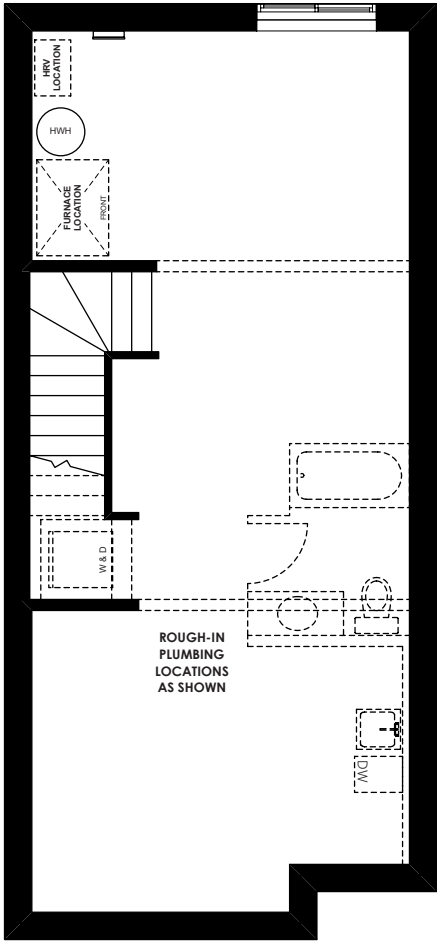


UPPER
717 SQ FT

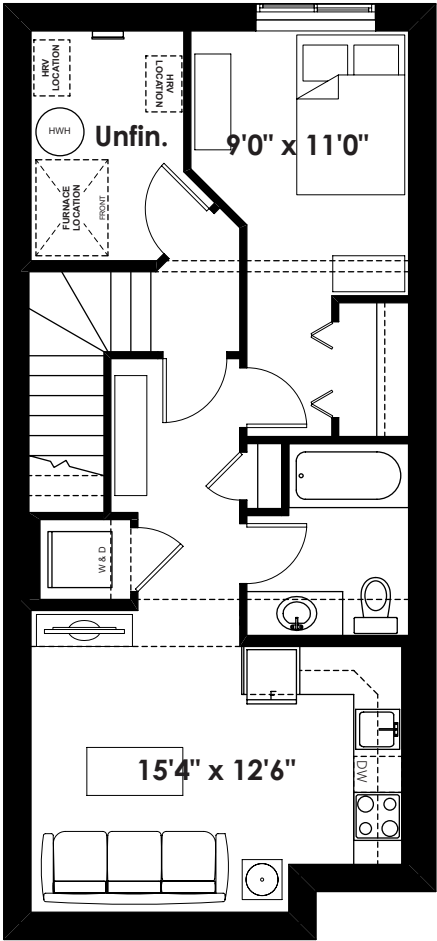
FLOOR PLAN OPTIONS



**Optional 1 Bedroom
Basement Room Layout
488 Sq. Ft. (Finished)**



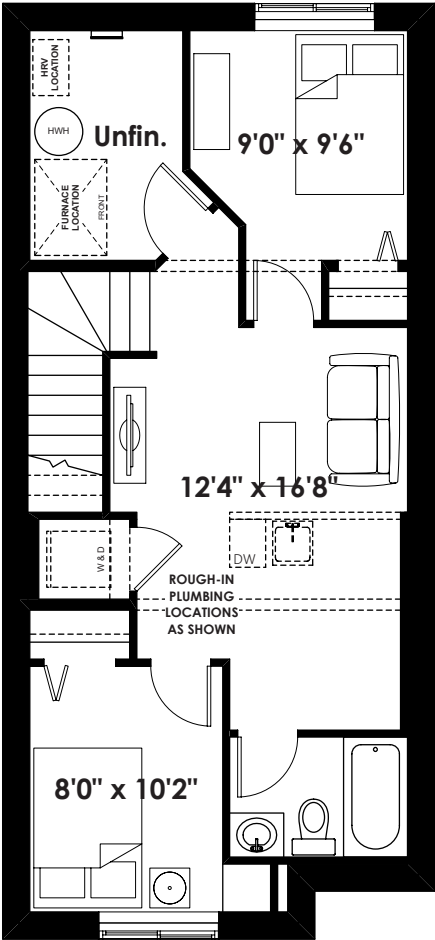
**Unfinished Basement
for 1 Bedroom Layout
(9' Foundation Walls)**



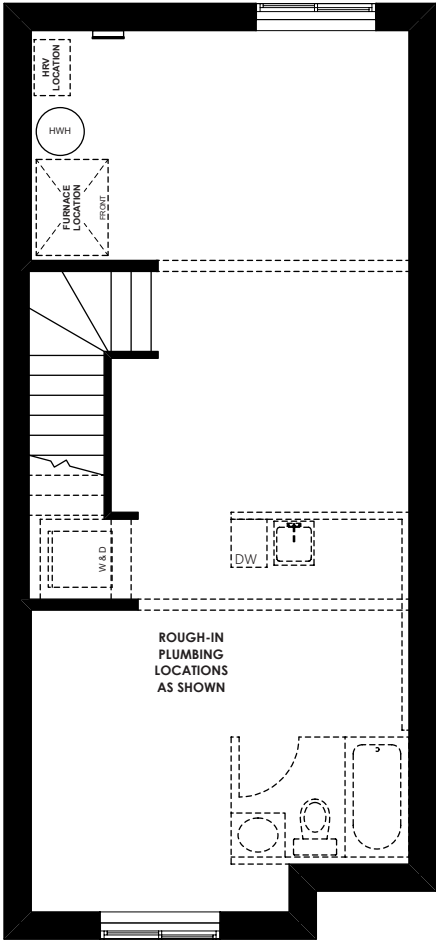
**Optional 1 Bedroom
Basement Suite Layout
504 Sq. Ft. (Finished)**

ADDITIONAL
OPTIONS

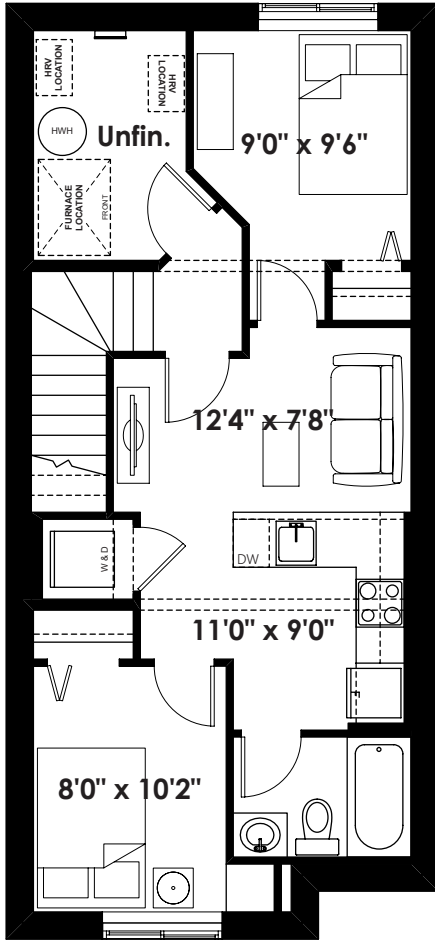
FLOOR PLAN OPTIONS



**Optional 2 Bedroom
Basement Room Layout
488 Sq. Ft. (Finished)**



**Unfinished Basement
for 2 Bedroom Layout
(9' Foundation Walls)**



**Optional 2 Bedroom
Basement Suite Layout
504 Sq. Ft. (Finished)**

Prices are subject to change without notice. Actual floor plan, elevation, and square footage may not be exactly as shown. Square footage is measured to Alberta Building Code (ABC) regulations. Builder reserves the right to make changes without notice. E&OE.

