

QUICK  
POSSESSION

# THE JEFFERSON

2,343 SQ FT | 3 BED | 2.5 BATH

123 STONEHOUSE WAY, LEDUC



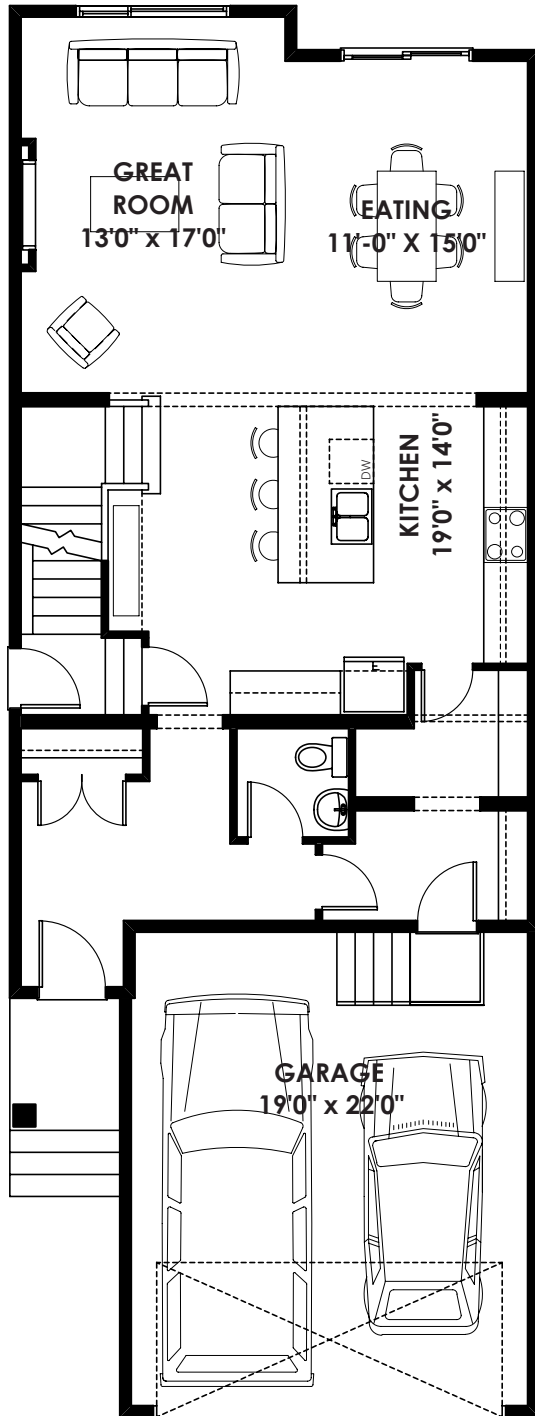
## THIS FRONT DRIVE HOME FEATURES

- Side entrance.
- Electric fireplace.
- Upper loft.
- Chimney hood fan.
- Upgraded 5pc ensuite.
- Full upper laundry room with folding counter.

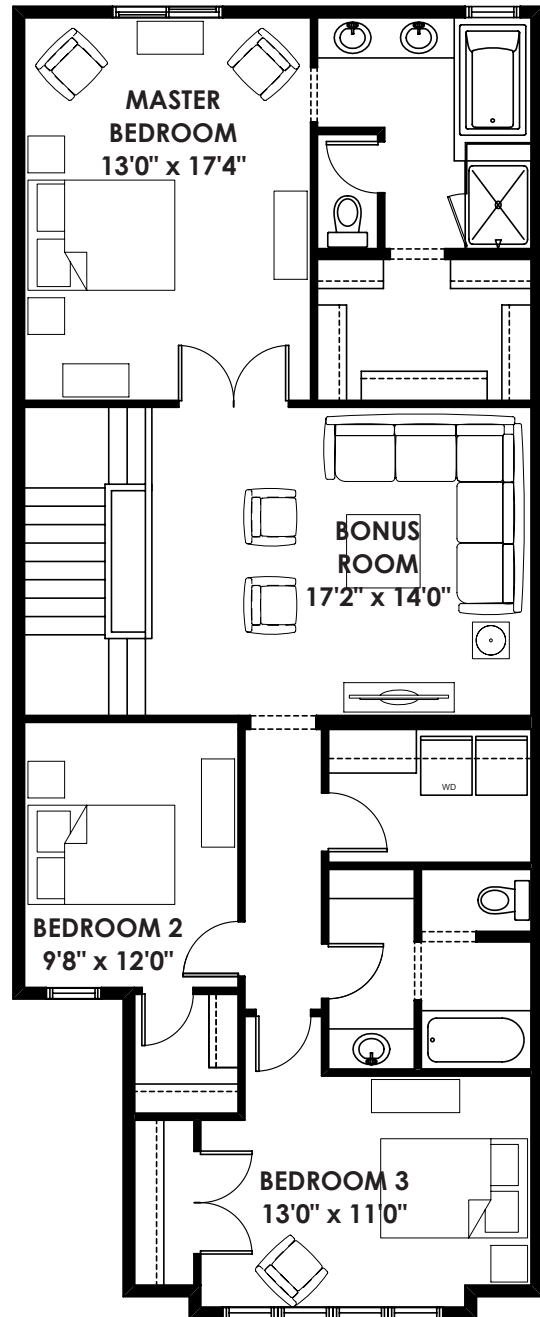
BETTER VALUE BY DESIGN  
SINCE 1978 | HOMESBYAVI.COM

Homes by **AVI**

## FLOOR PLAN



**MAIN**  
1,003 SQ FT



**UPPER**  
1,340 SQ FT

For more information or to book an appointment please contact us at **587.525.5210**

Prices are subject to change without notice. Actual floor plan, elevation, and square footage may not be exactly as shown. Square footage is measured to Alberta Building Code (ABC) regulations. Builder reserves the right to make changes without notice. E&OE.

Homes by **AVI**