

24'

# THE BRYSON

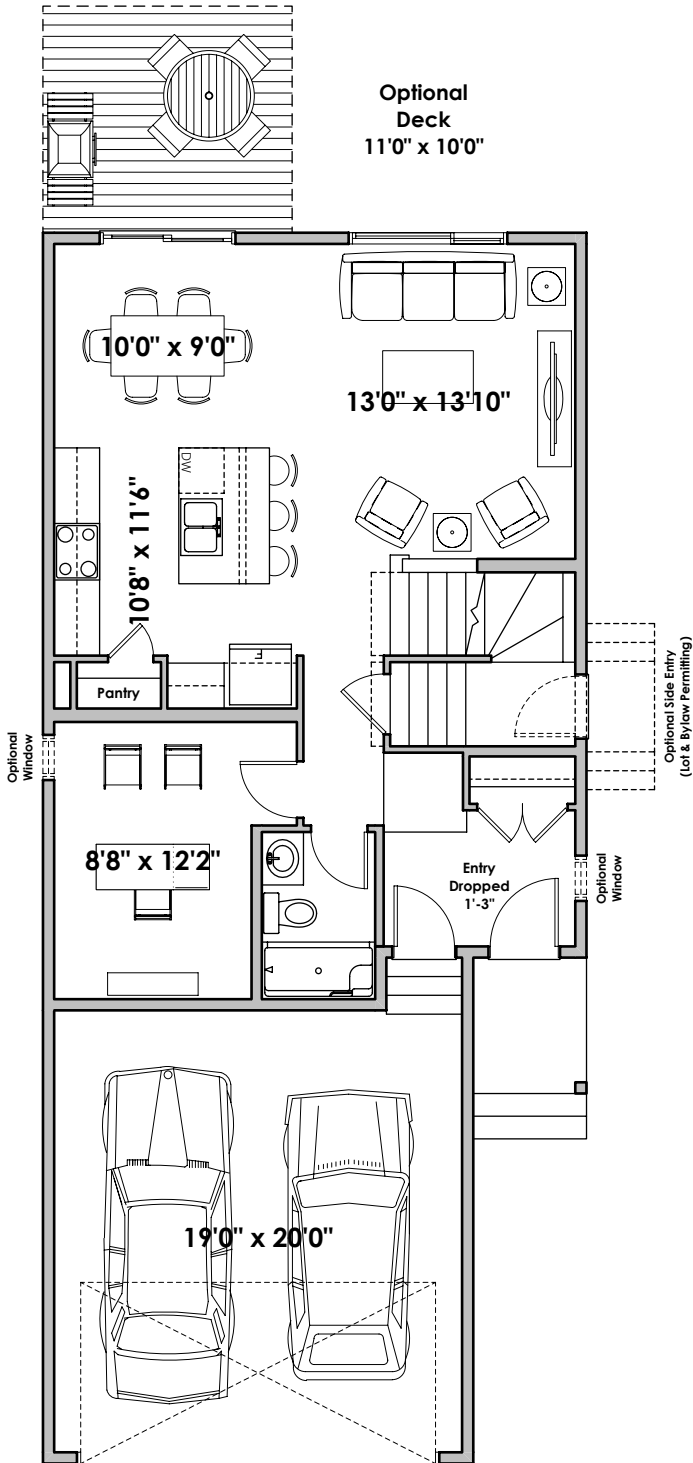
1,812+ SQ FT | 3 BED + FLEX | 3 BATH



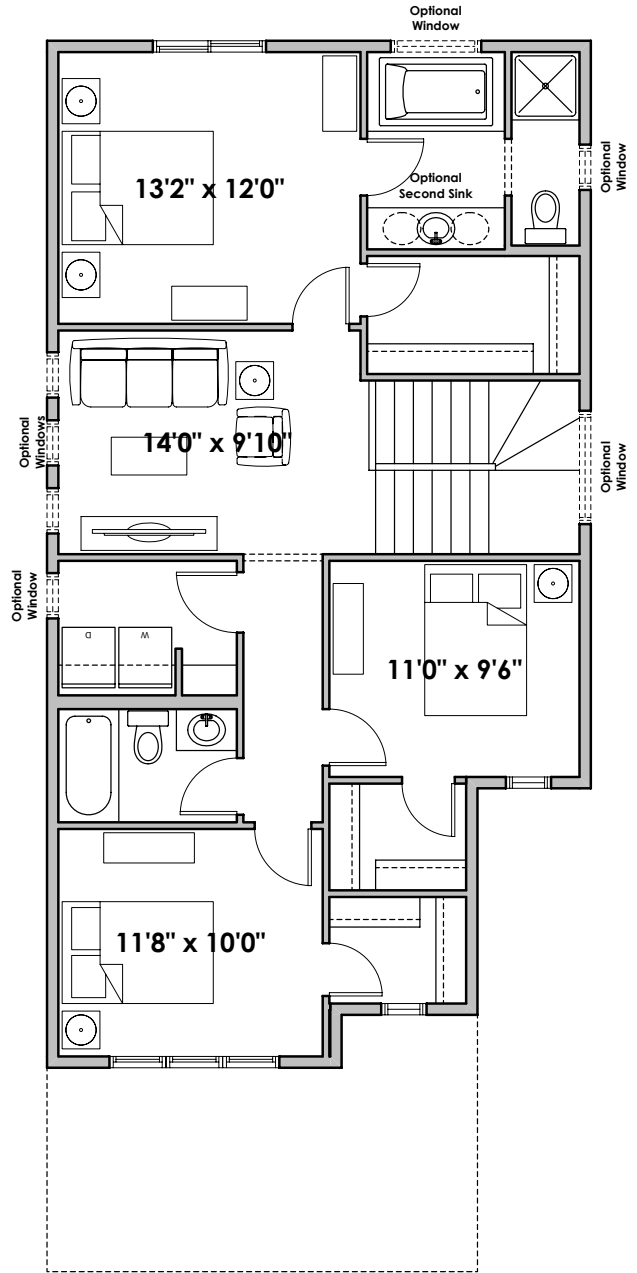
BETTER VALUE BY DESIGN  
SINCE 1978 | HOMESBYAVI.COM

Homes by **AVI**

# BASE FLOOR PLAN

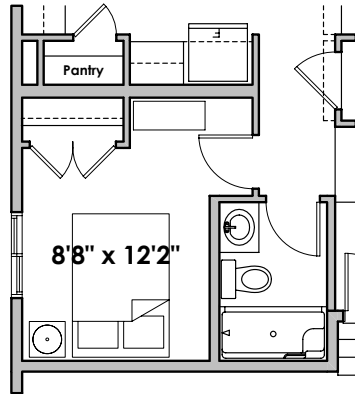


**MAIN**  
803 SQ FT

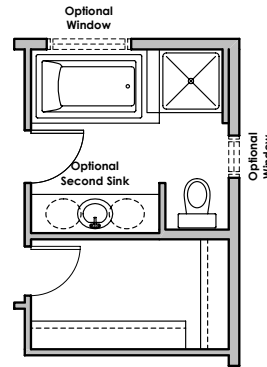


**UPPER**  
1,009 SQ FT

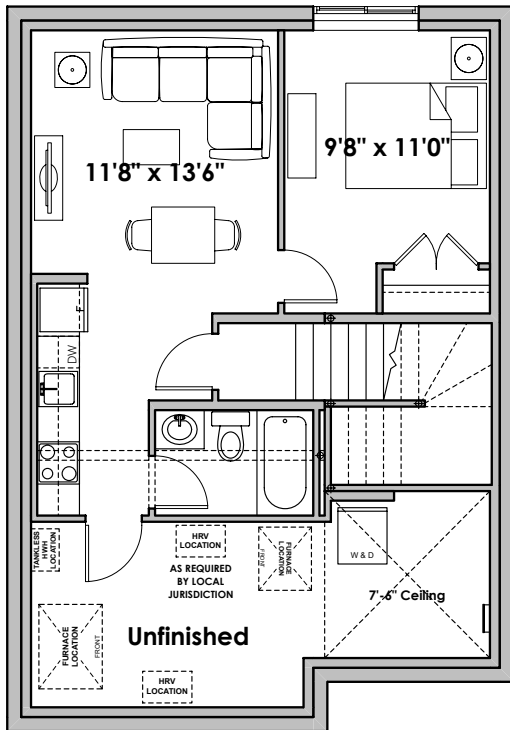
# FLOOR PLAN OPTIONS



**Partial Main Floor Plan with  
Optional Bedroom  
(Adds 0 Sq.Ft. to Main Floor)**

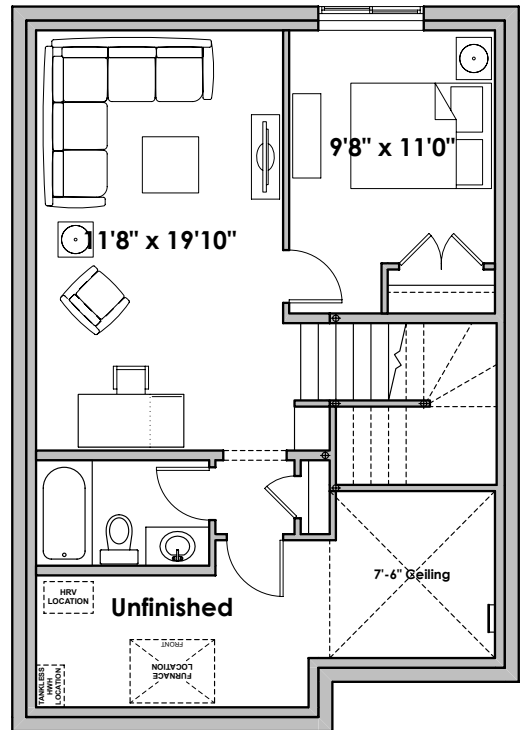


**Partial Second Floor Plan with  
Optional Glass Wall Shower  
(Adds 0 Sq. Ft. to Second Floor)**



**Optional Basement Suite Layout  
457 Sq. Ft. (Finished Area;  
Includes 9' Foundation Walls)**

BASEMENT SUITE MAY NOT CONFORM  
TO ALL MUNICIPALITIES;  
LAND USE BY-LAW & CODE MUST BE  
REVIEWED PRIOR TO ACCEPTANCE



**Optional Basement Room Layout  
491 Sq. Ft. (Finished Area;  
Includes 9' Foundation Walls)**

AVAILABILITY OF OPTIONAL WINDOWS & FIREPLACES IS SUBJECT TO PARTYWALLS & BUILDING CODES.

Prices are subject to change without notice. Actual floor plan, elevation, and square footage may not be exactly as shown. Square footage is measured to Alberta Building Code (ABC) regulations. Builder reserves the right to make changes without notice. E&OE. MAR-04-2026.

