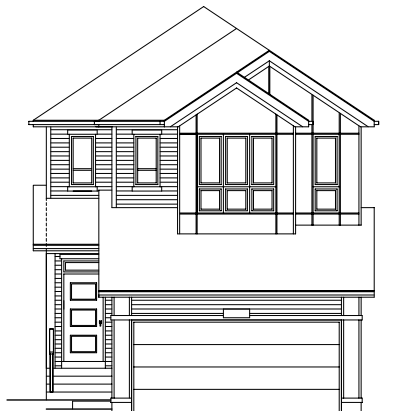


QUICK
POSSESSION

THE JEFFERSON

2,348 SQ FT | 3 BED | 2.5 BATH

17355-2 STREET NW



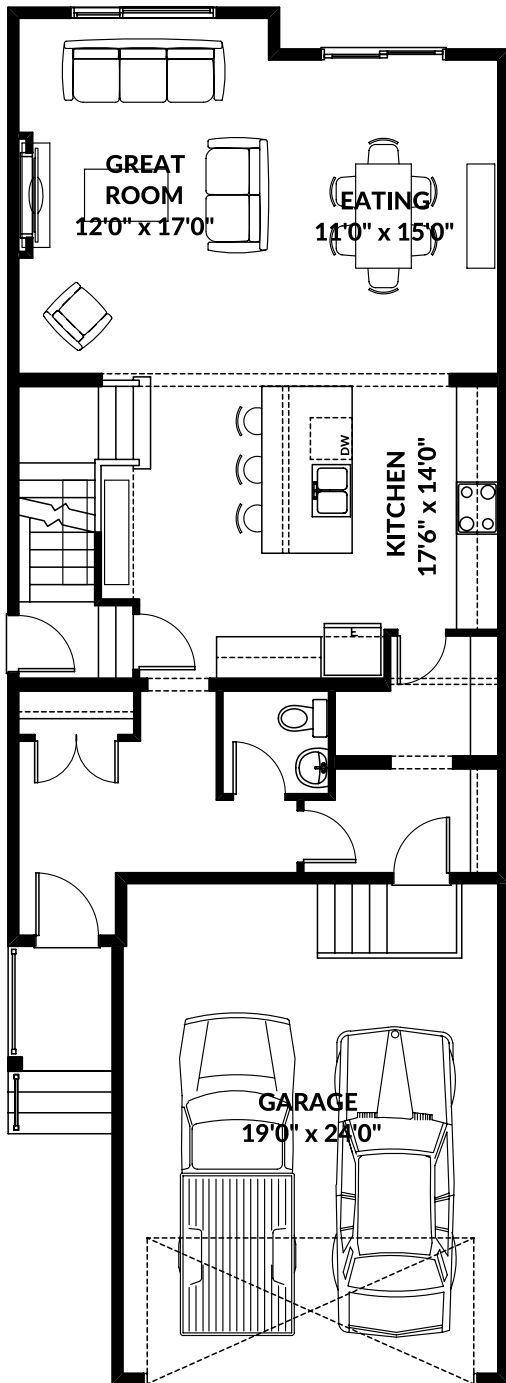
THIS FRONT DRIVE HOME FEATURES

- 9' ceilings.
- Side entry.
- Regular lot with additional side windows.
- Quartz countertops.
- Additional length to garage w/ floor drain.
- Chimney hood fan and appliance allowance.
- Walking trail behind and beside with developer fence.

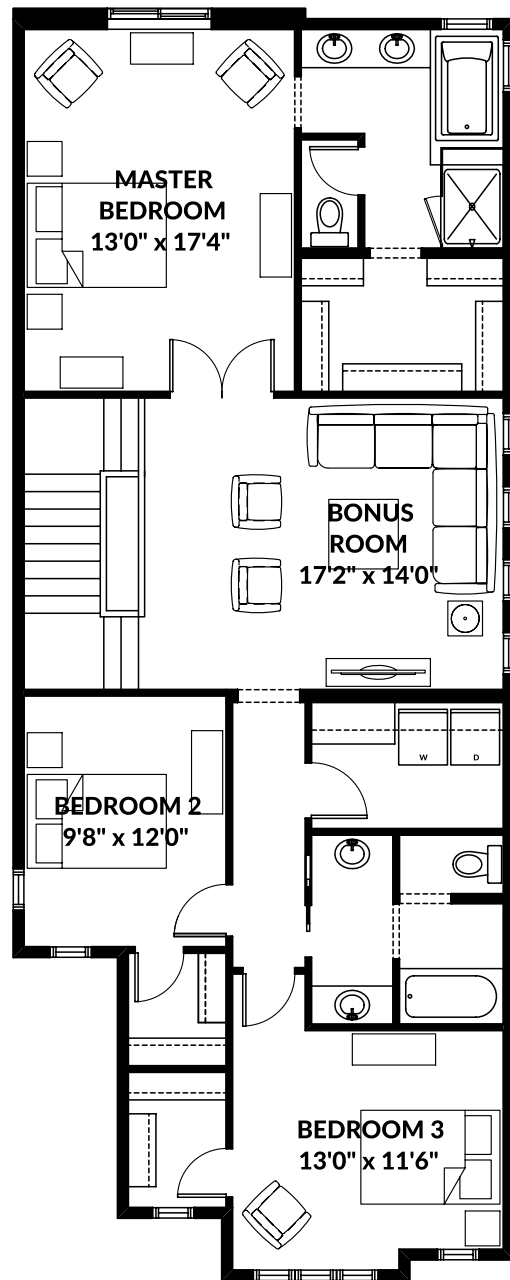
BETTER VALUE BY DESIGN
SINCE 1978 | HOMESBYAVI.COM

Homes by **AVI**

FLOOR PLAN



MAIN
1,003 SQ FT



UPPER
1,345 SQ FT

For more information or to book an appointment please contact us at **587.525.5079**

Prices are subject to change without notice. Actual floor plan, elevation, and square footage may not be exactly as shown. Square footage is measured to Alberta Building Code (ABC) regulations. Builder reserves the right to make changes without notice. E&OE.

Homes by **AVI**