

QUICK  
POSSESSION

# THE SASHA

1,523 SQ FT | 3 BED | 2.5 BATH

7141 - 52 AVENUE BEAUMONT



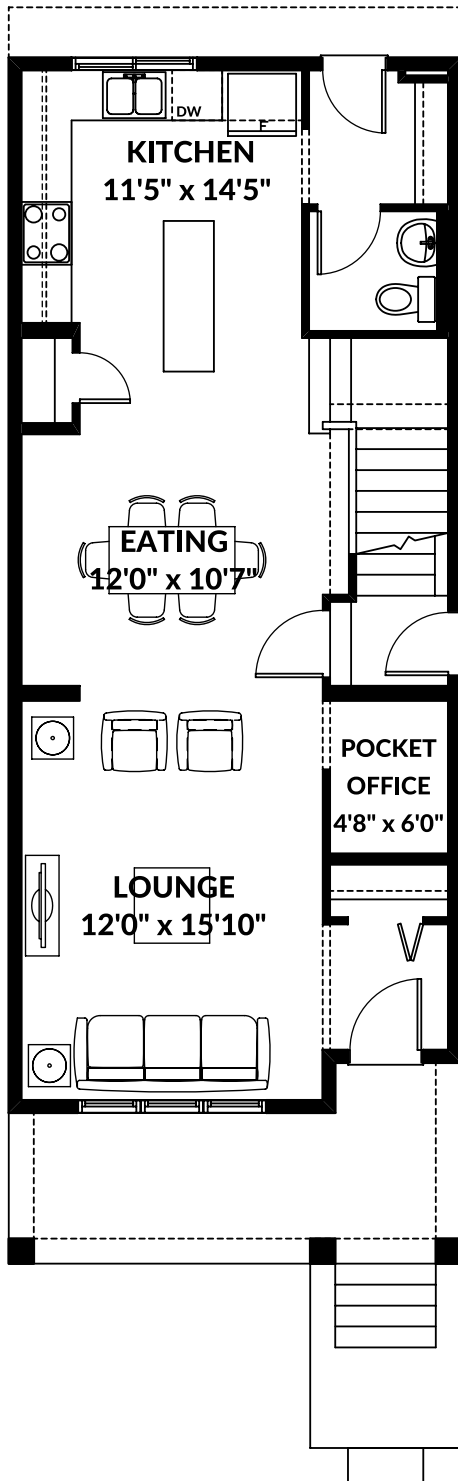
## THIS LANED HOME FEATURES

- Rear double detached garage.
- Side entrance.
- 9' basement ceiling height.
- Quartz countertops throughout.
- Luxury Vinyl Plank flooring throughout main floor.
- Kitchen chimney hood fan with built-in microwave.
- Front landscaping included.

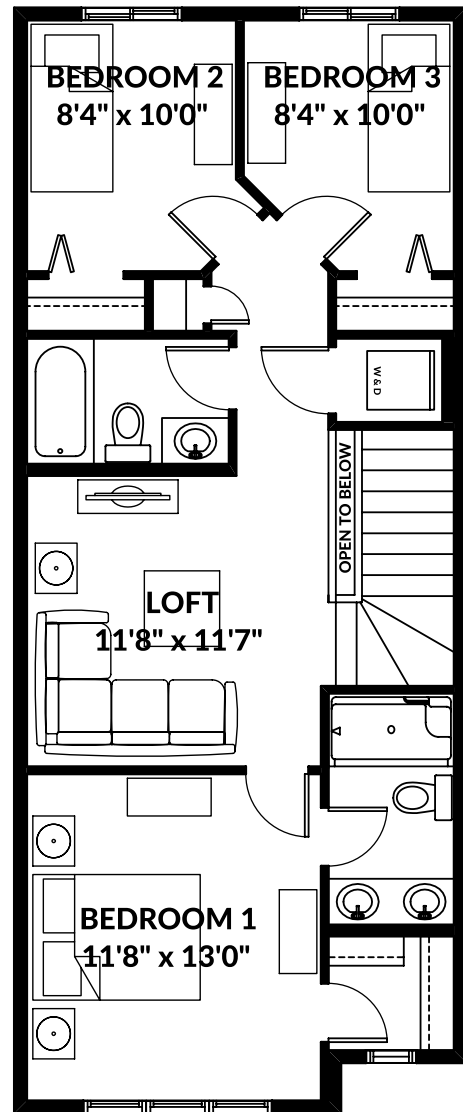
BETTER VALUE BY DESIGN  
SINCE 1978 | HOMESBYAVI.COM

Homes by **AVI**

# FLOOR PLAN



**MAIN**  
746 SQ FT



**UPPER**  
777 SQ FT

For more information or to book an appointment please contact us at **587.525.5091**

Prices are subject to change without notice. Actual floor plan, elevation, and square footage may not be exactly as shown. Square footage is measured to Alberta Building Code (ABC) regulations. Builder reserves the right to make changes without notice. E&OE.

Homes by **AVI**