

QUICK
POSSESSION

THE HAWTHORNE

2,209 SQ FT | 4 BED | 3 BATH

2234 - 193A STREET NW



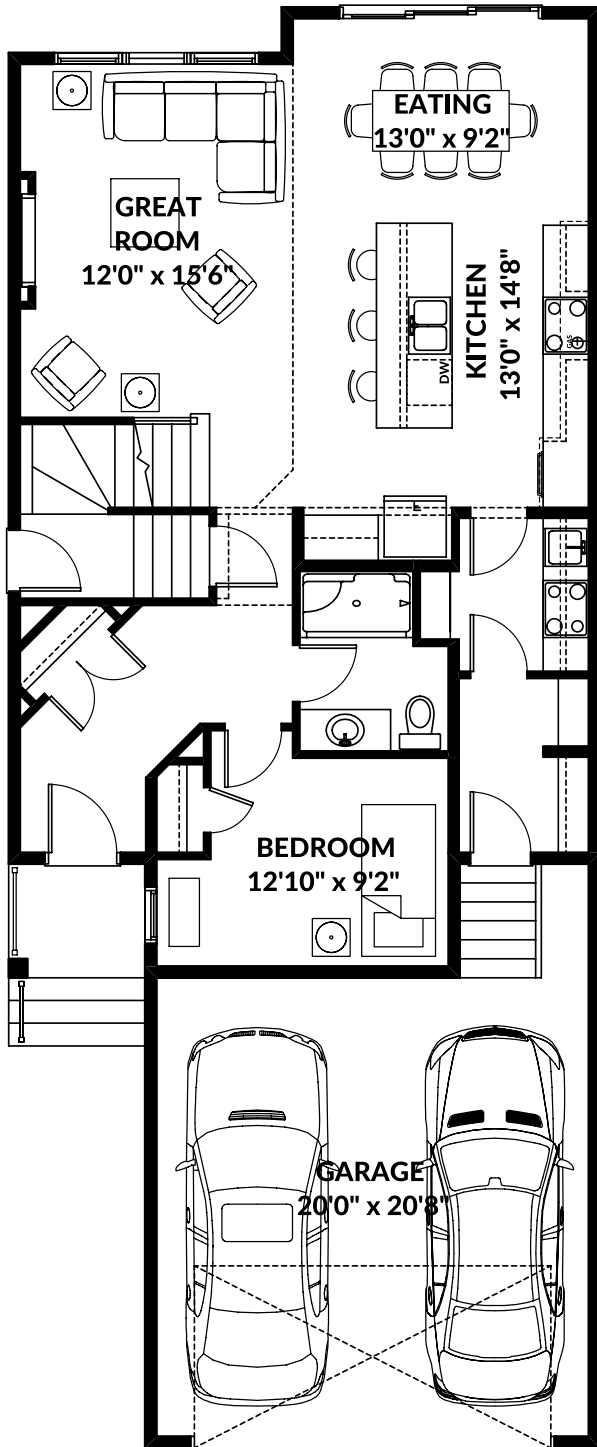
THIS FRONT DRIVE HOME FEATURES

- Main floor bedroom with full bathroom.
- Spice kitchen.
- Upgrade kitchen with build in appliances.
- Open to below.
- 9' main and basement wall height.
- Suite ready basement with rough ins.

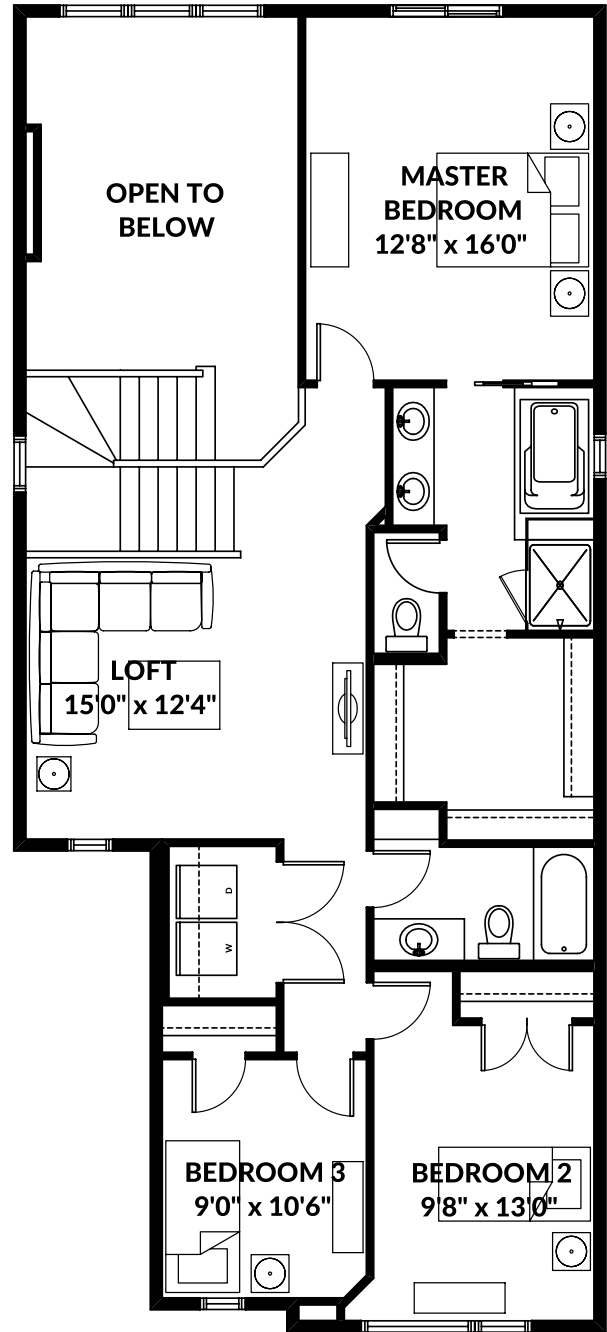
BETTER VALUE BY DESIGN
SINCE 1978 | HOMESBYAVI.COM

Homes by **AVI**

FLOOR PLAN



MAIN
1,025 SQ FT



UPPER
1,184 SQ FT

For more information or to book an appointment please contact us at **587.525.5089**

Prices are subject to change without notice. Actual floor plan, elevation, and square footage may not be exactly as shown. Square footage is measured to Alberta Building Code (ABC) regulations. Builder reserves the right to make changes without notice. E&OE.

Homes by **AVI**