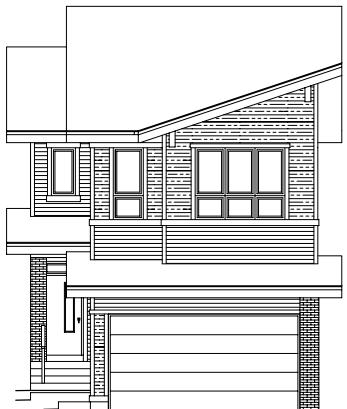


QUICK
POSSESSION

THE HEMSWORTH

2,067 SQ FT | 4 BED | 3 BATH

2233 193A STREET NW



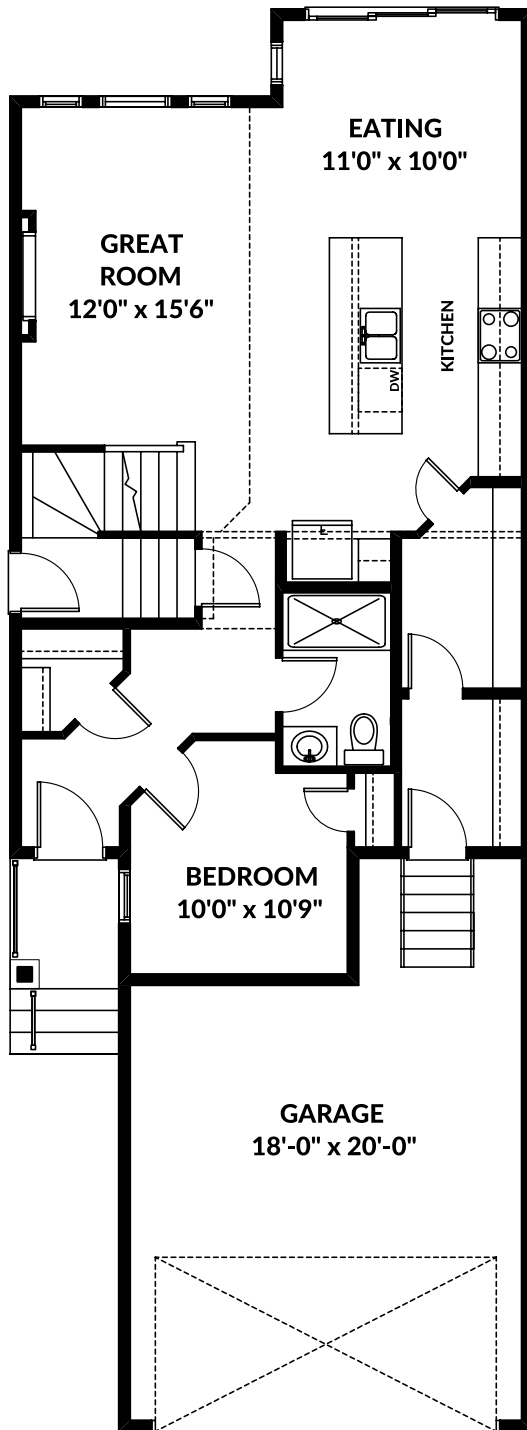
THIS FRONT DRIVE HOME FEATURES

- Main floor bedroom with full bathroom.
- Walk through pantry and mudroom.
- Open to below.
- Side entrance.
- 9' main floor and basement wall height.
- Gas stove roughed in.

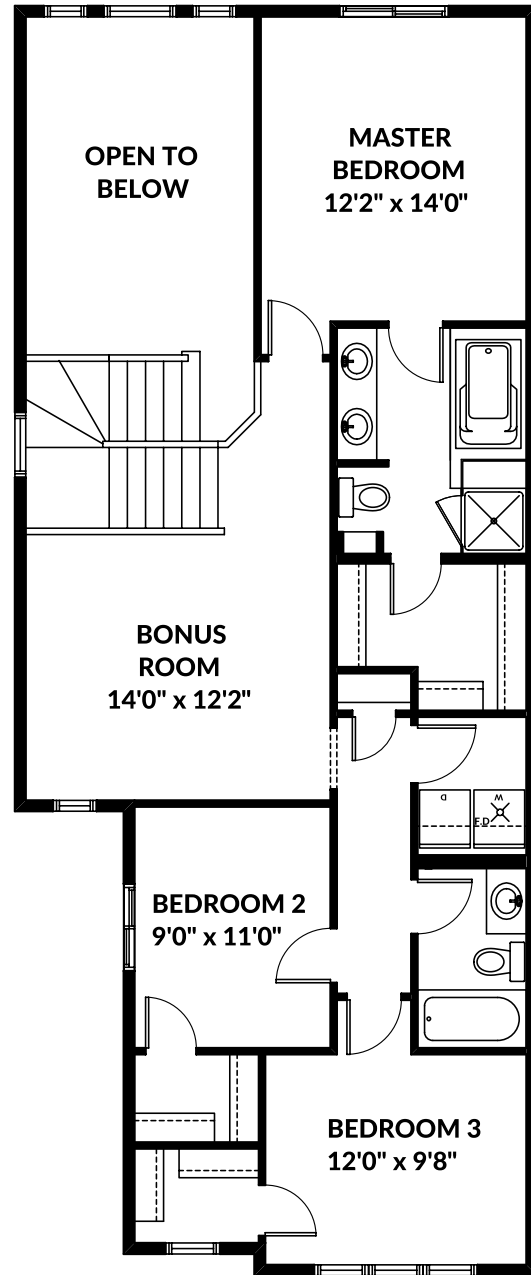
BETTER VALUE BY DESIGN
SINCE 1978 | HOMESBYAVI.COM

Homes by **AVI**

FLOOR PLAN



MAIN
952 SQ FT



UPPER
1,115 SQ FT

For more information or to book an appointment please contact us at **587.525.5089**

Prices are subject to change without notice. Actual floor plan, elevation, and square footage may not be exactly as shown. Square footage is measured to Alberta Building Code (ABC) regulations. Builder reserves the right to make changes without notice. E&OE.

Homes by **AVI**