

QUICK
POSSESSION

THE JEFFERSON

2,353 SQ FT | 3 BED | 2.5 BATH

34 WALCREST ROW SE



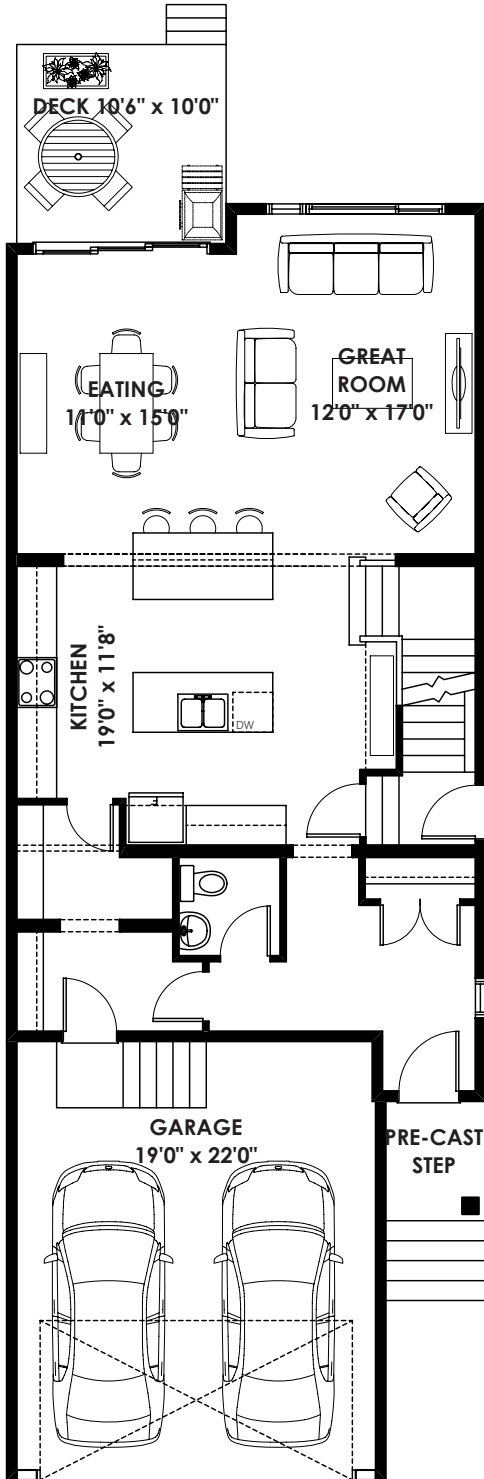
THIS FRONT DRIVE HOME FEATURES

- Double kitchen islands
- Gas lines to stove and BBQ
- Double Vanity in both ensuite and main bath
- Cabinets to ceiling in Kitchen with chimney hoodfan and upgraded built-in microwave
- 9' foundation and 200 amp electrical panel
- Quartz throughout
- Electric fireplace in great room

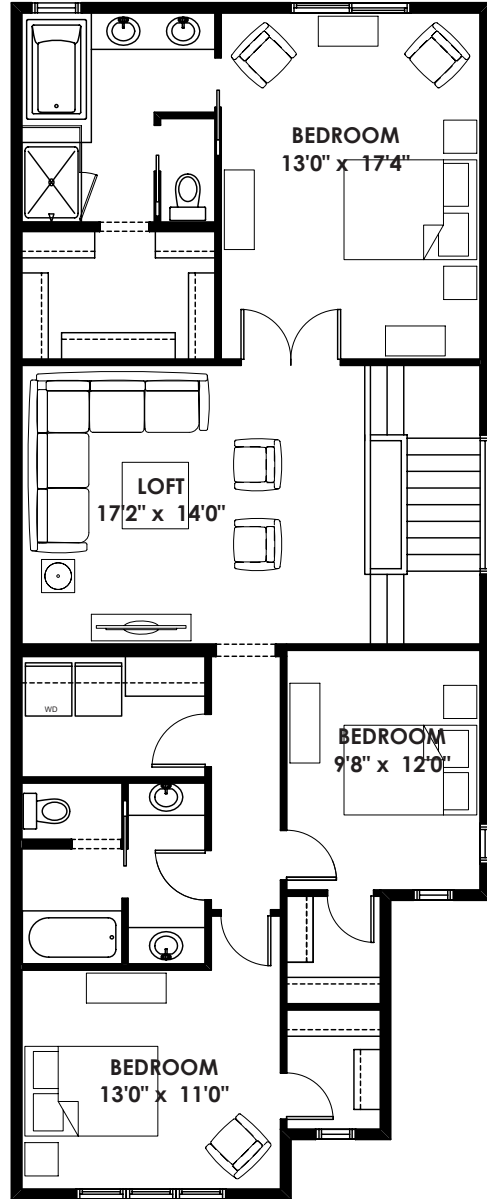
BETTER VALUE BY DESIGN
SINCE 1978 | HOMESBYAVI.COM

Homes by **AVI**

FLOOR PLAN



MAIN
1,003 SQ FT



UPPER
1,350 SQ FT

For more information or to book an appointment please contact us at **587.536.7272**

Prices are subject to change without notice. Actual floor plan, elevation, and square footage may not be exactly as shown. Square footage is measured to Alberta Building Code (ABC) regulations. Builder reserves the right to make changes without notice. E&OE.

Homes by **AVI**