

QUICK
POSSESSION

THE HEMSWORTH

2,019 SQ FT | 4 BED | 3 BATH

4822 HAWTHORN BEND SW



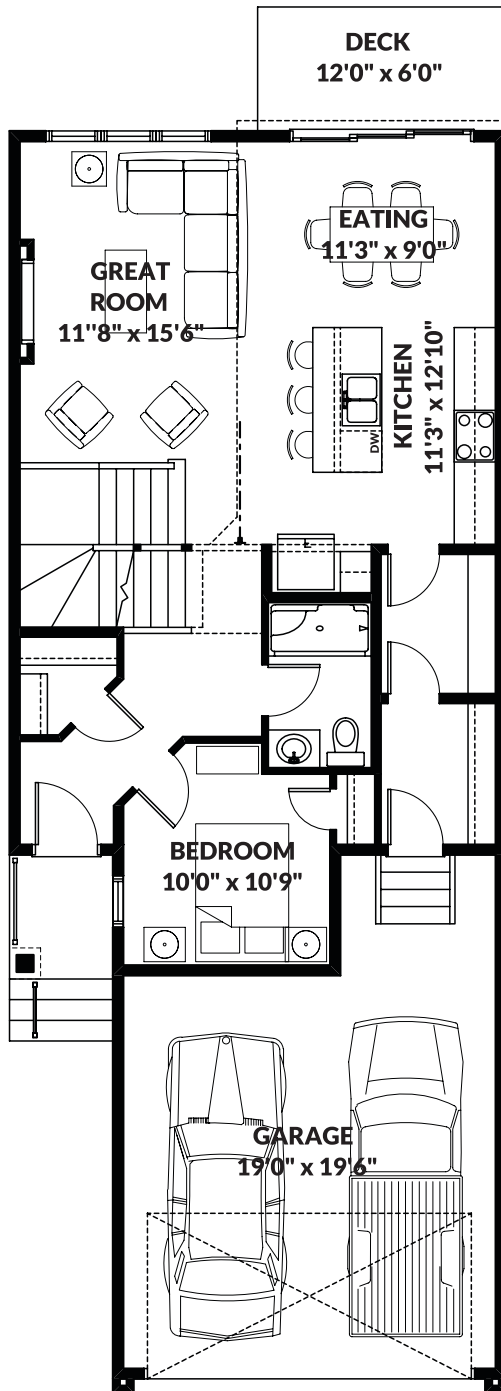
THIS FRONT DRIVE HOME FEATURES

- Full walkout.
- Front is West exposure.
- Main floor bedroom with full washroom.
- Sophisticated upgrades.
- Open to below.
- Front and back landscaping.

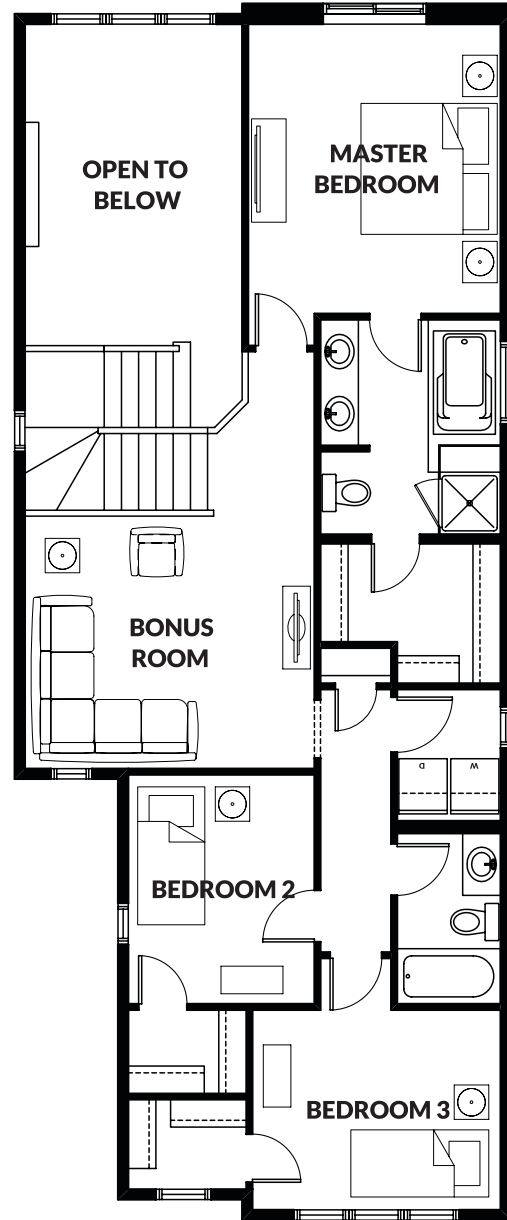
BETTER VALUE BY DESIGN
SINCE 1978 | HOMESBYAVI.COM

Homes by **AVI**

FLOOR PLAN



MAIN
904 SQ FT



UPPER
1,115 SQ FT

For more information or to book an appointment please contact us at **587.525.5184**

Prices are subject to change without notice. Actual floor plan, elevation, and square footage may not be exactly as shown. Square footage is measured to Alberta Building Code (ABC) regulations. Builder reserves the right to make changes without notice. E&OE.

Homes by **AVI**