

QUICK
POSSESSION

THE LINCOLN

2,564 SQ FT | 4 BED | 3 BATH

2226 193A STREET NW



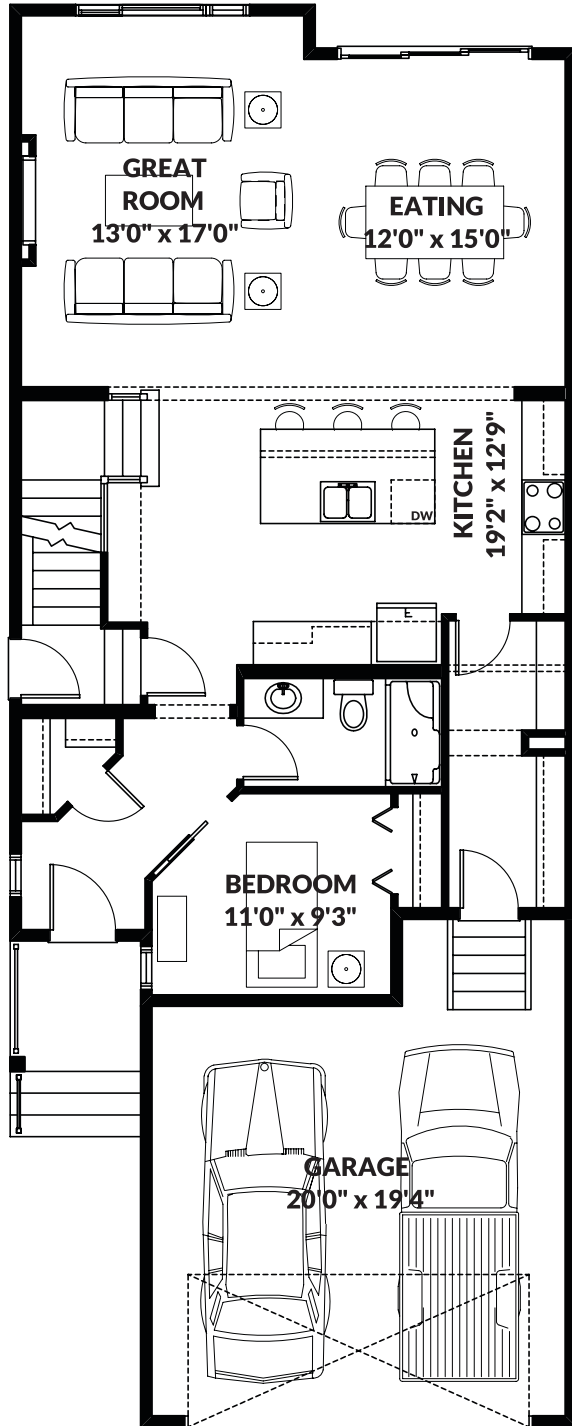
THIS FRONT DRIVE HOME FEATURES

- Main floor bedroom with full bathroom (walk in shower).
- 9' main floor and basement.
- Suite ready basement.
- Gas stove rough in.
- Bonus room with windows.
- Upgraded ensuite with his and her sinks.
- Side entrance.

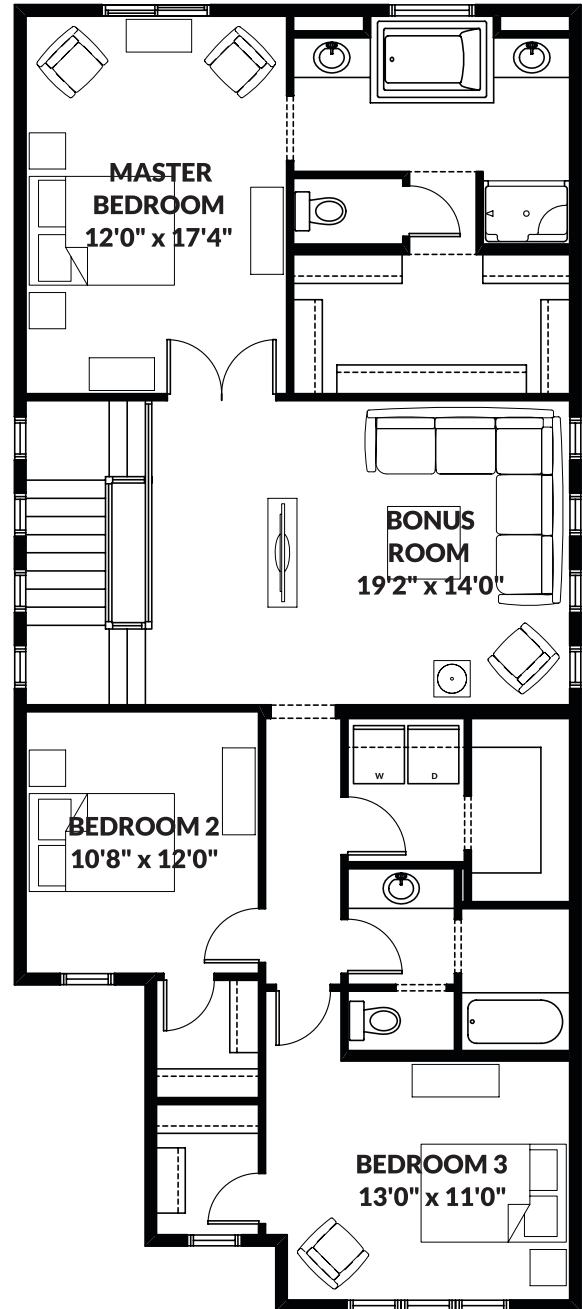
BETTER VALUE BY DESIGN
SINCE 1978 | HOMESBYAVI.COM

Homes by **AVI**

FLOOR PLAN



MAIN
1,122 SQ FT



UPPER
1,442 SQ FT

For more information or to book an appointment please contact us at **587.525.5089**

Prices are subject to change without notice. Actual floor plan, elevation, and square footage may not be exactly as shown. Square footage is measured to Alberta Building Code (ABC) regulations. Builder reserves the right to make changes without notice. E&OE.

Homes by **AVI**