

QUICK
POSSESSION

THE HAWTHORNE

2,218 SQ FT | 4 BED | 3 BATH

16939 - 49 STREET NW



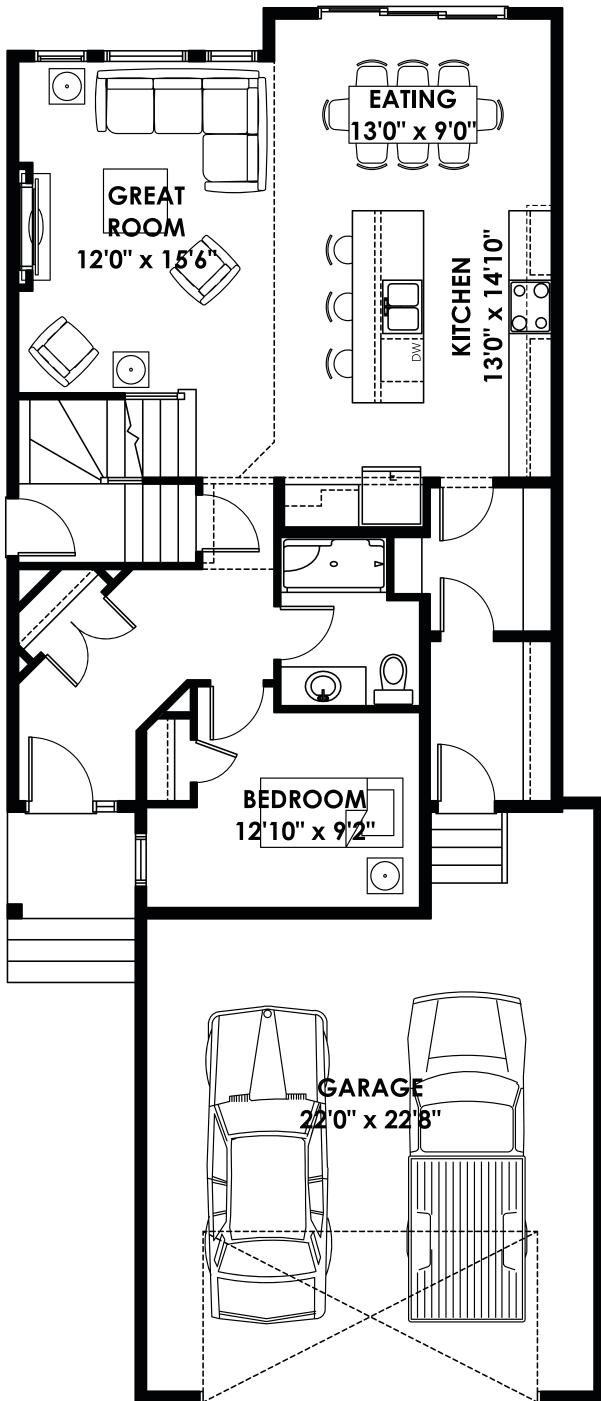
THIS FRONT DRIVE HOME FEATURES

- Open to below great room, with fireplace.
- Main floor bedroom with full bathroom.
- Side entry to stairwell with concrete sidewalk.
- 39" upper cabinets in kitchen and quartz throughout.
- Master bedroom with 5 piece ensuite.
- Iron railing on staircase.
- Oversized garage with floor drain.

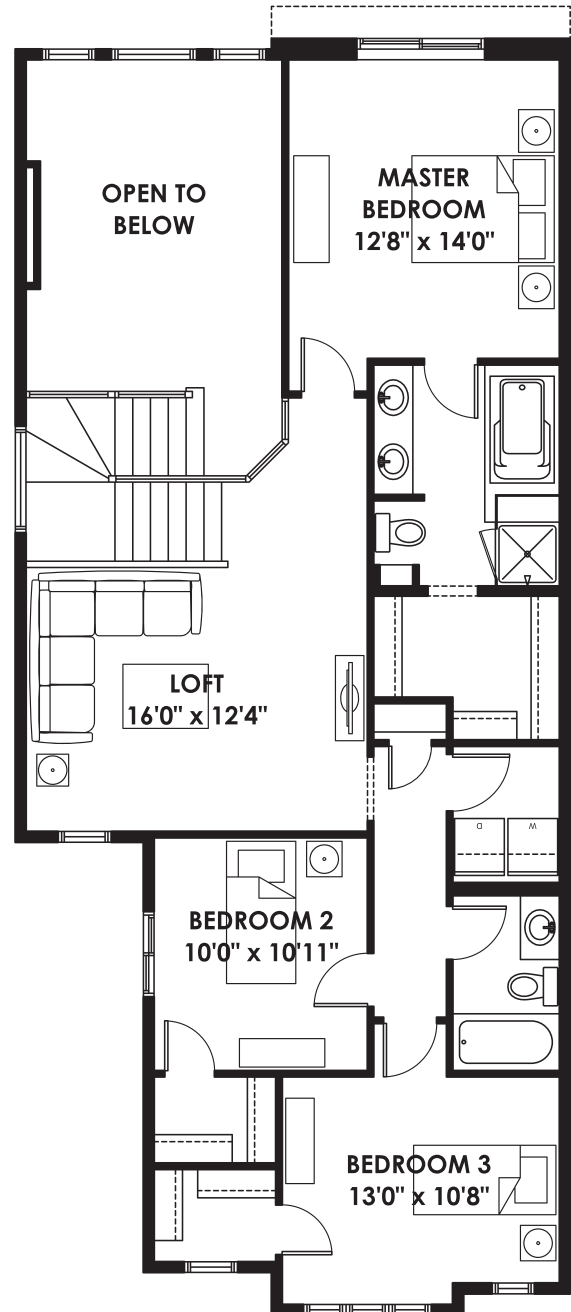
BETTER VALUE BY DESIGN
SINCE 1978 | HOMESBYAVI.COM

Homes by **AVI**

FLOOR PLAN



MAIN
1,025 SQ FT



UPPER
1,193 SQ FT

For more information or to book an appointment please contact us at **587.525.5090**

Prices are subject to change without notice. Actual floor plan, elevation, and square footage may not be exactly as shown. Square footage is measured to Alberta Building Code (ABC) regulations. Builder reserves the right to make changes without notice. E&OE.

Homes by **AVI**