

QUICK  
POSSESSION

# THE HEMSWORTH

2,068 SQ FT | 4 BED | 3 BATH

121 STONEHOUSE WAY, LEDUC



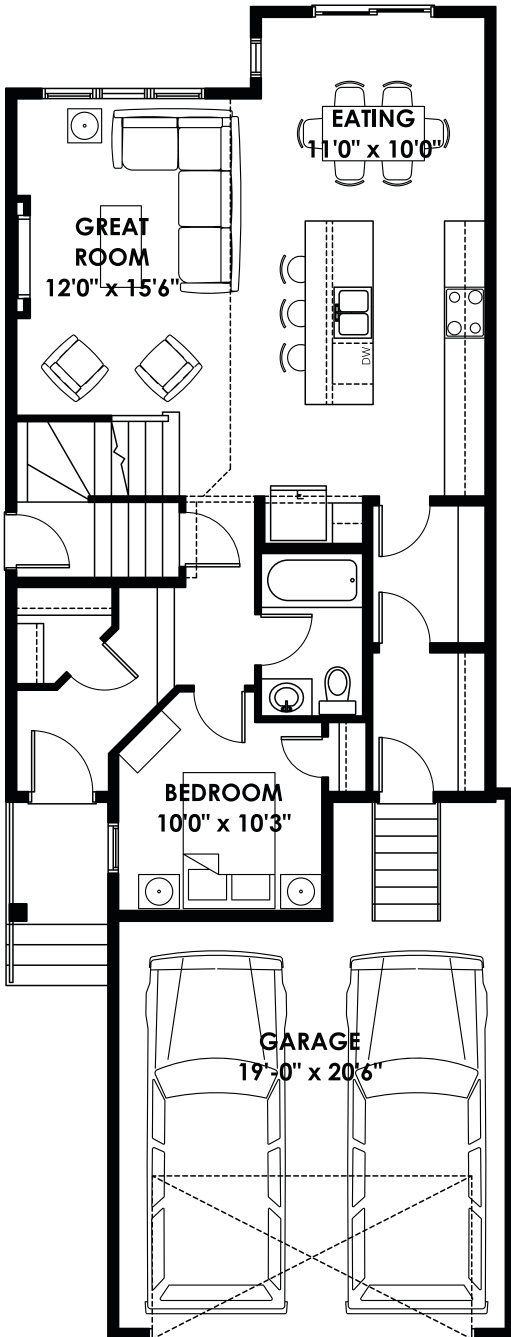
## THIS FRONT DRIVE HOME FEATURES

- Open to below.
- Side entrance.
- Main floor bedroom & full bath.
- Electric fireplace.
- Upgraded 5pc ensuite.
- Upper loft.
- Upper laundry room.

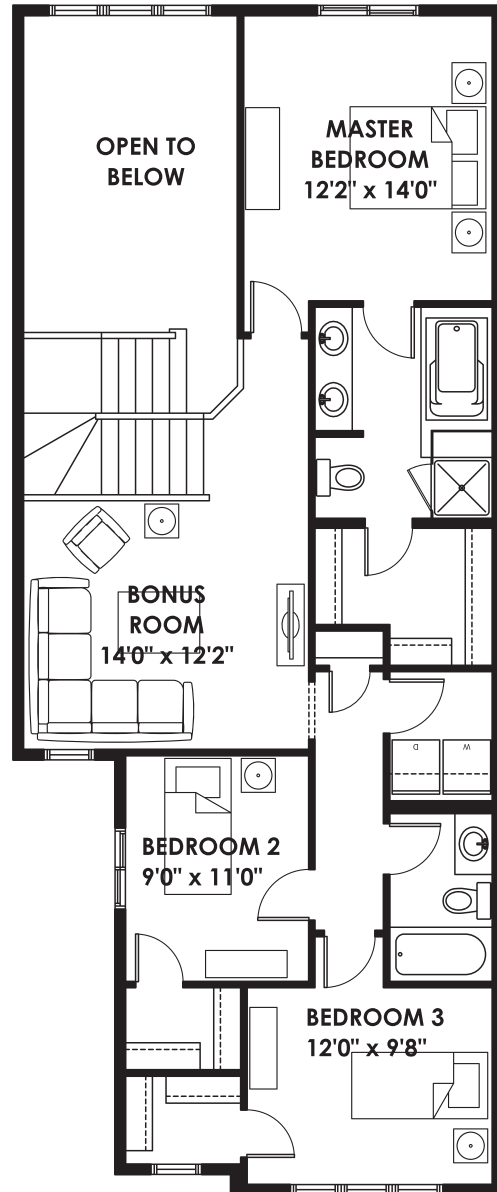
BETTER VALUE BY DESIGN  
SINCE 1978 | HOMESBYAVI.COM

Homes by **AVI**

# FLOOR PLAN



**MAIN**  
952 SQ FT



**UPPER**  
1,116 SQ FT

For more information or to book an appointment please contact us at **587.525.5090**

Prices are subject to change without notice. Actual floor plan, elevation, and square footage may not be exactly as shown. Square footage is measured to Alberta Building Code (ABC) regulations. Builder reserves the right to make changes without notice. E&OE.

Homes by **AVI**