

QUICK
POSSESSION

THE GABRIEL

2,024 SQ FT | 3 BED + FLEX | 2.5 BATH

2511 - 210 STREET NW



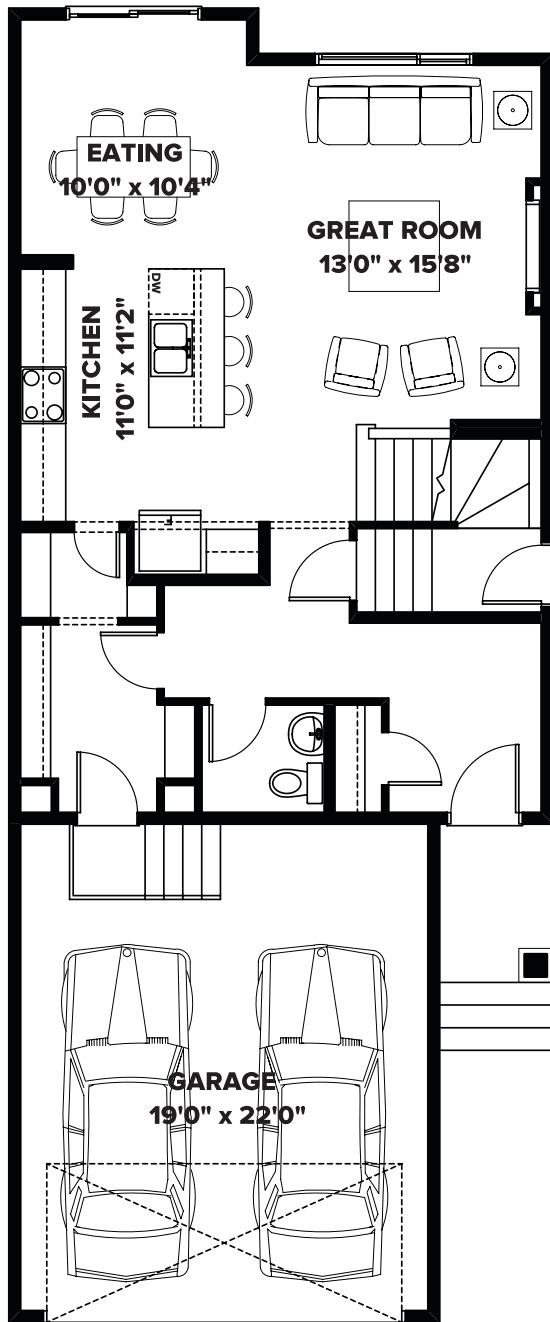
THIS FRONT DRIVE HOME FEATURES

- Chef's kitchen with chimney hood fan & built in microwave.
- Soft close cabinetry with glass upper cabinets to ceiling and pot & pan drawers.
- Walk through mudroom & pantry with built in bench and MDF shelving.
- Electric fireplace in the great room with mantle and tiled surround.
- Railing with matte black iron spindles.
- Quartz folding counter & linen cabinet in the laundry.
- Future 1 bedroom suite possible.

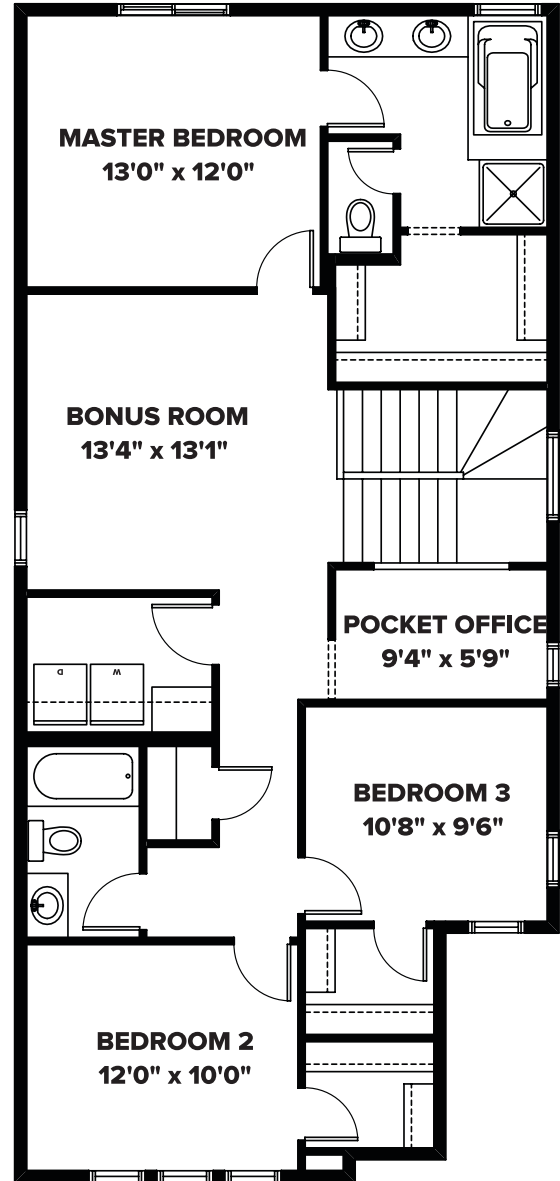
BETTER VALUE BY DESIGN
SINCE 1978 | HOMESBYAVI.COM

Homes by **AVI**

FLOOR PLAN



MAIN
838 SQ FT



UPPER
1,186 SQ FT

For more information or to book an appointment please contact us at **587.525.5200**

Prices are subject to change without notice. Actual floor plan, elevation, and square footage may not be exactly as shown. Square footage is measured to Alberta Building Code (ABC) regulations. Builder reserves the right to make changes without notice. E&OE.

Homes by **AVI**