

QUICK
POSSESSION

THE HEMSWORTH

2,052 SQ FT | 3 BED | 2.5 BATH

135 STONEHOUSE WAY



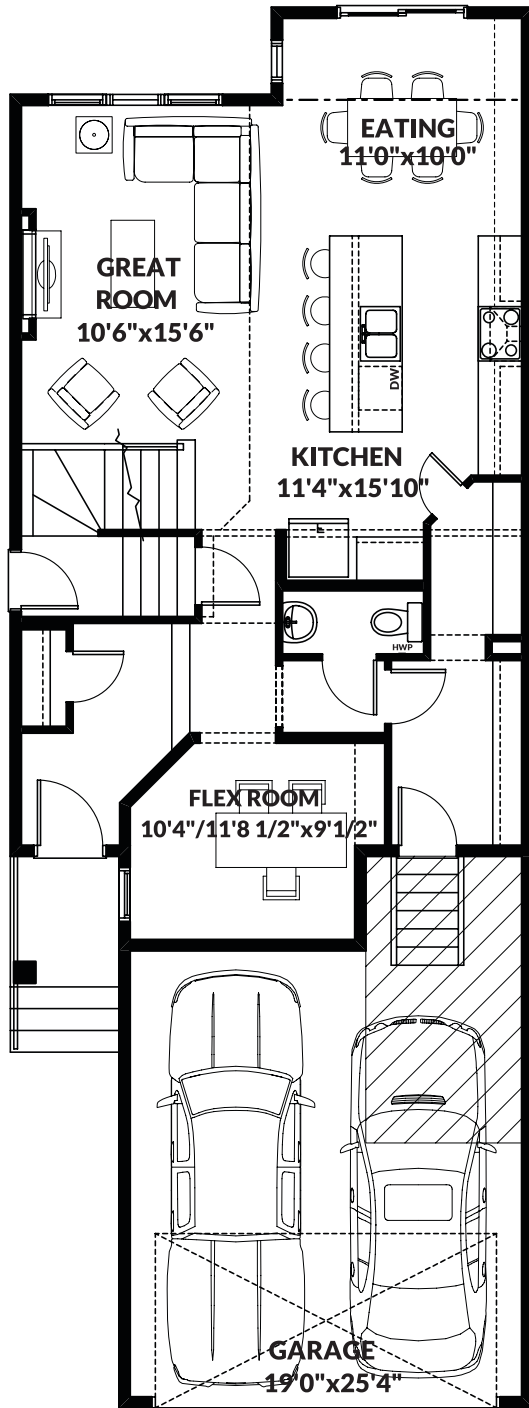
THIS FRONT DRIVE HOME FEATURES

- Open to below ceiling.
- Side entrance.
- Landscaping.
- Main flex room.
- Electric fireplace.
- Upper loft.
- Upgraded 5pc ensuite.

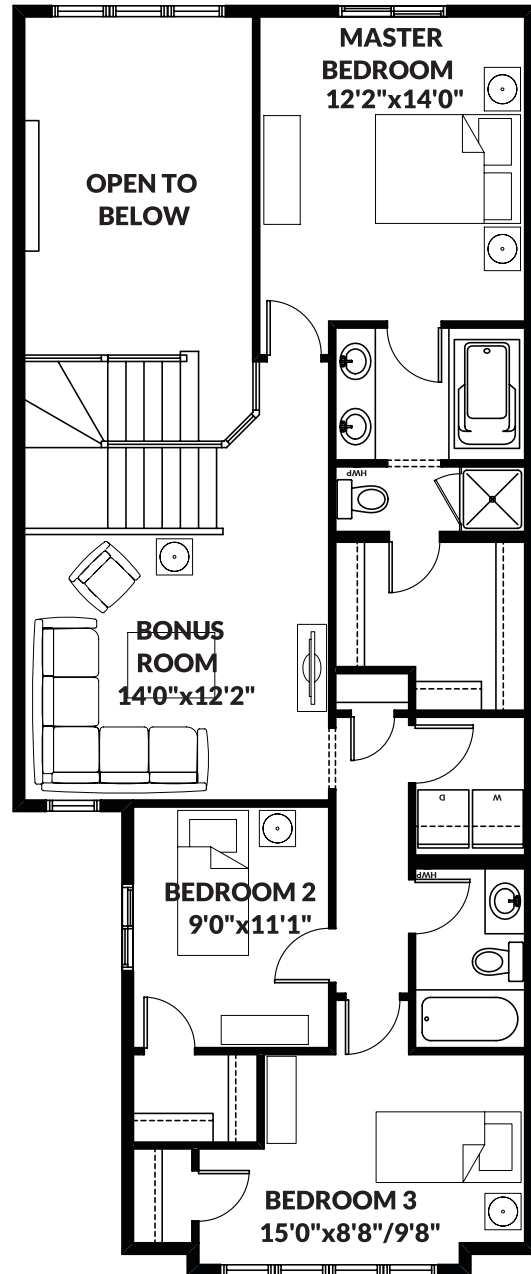
BETTER VALUE BY DESIGN
SINCE 1978 | HOMESBYAVI.COM

Homes by **AVI**

FLOOR PLAN



MAIN
937 SQ FT



UPPER
1,116 SQ FT

For more information or to book an appointment please contact us at **587.525.5210**

Prices are subject to change without notice. Actual floor plan, elevation, and square footage may not be exactly as shown. Square footage is measured to Alberta Building Code (ABC) regulations. Builder reserves the right to make changes without notice. E&OE.

Homes by **AVI**