

SHOW  
HOME

# THE ALEXANDER

1,391 SQ FT | 4 BED | 3.5 BATH

268 LANGWELL COMMON, AIRDRIE



## THIS DUPLEX HOME FEATURES

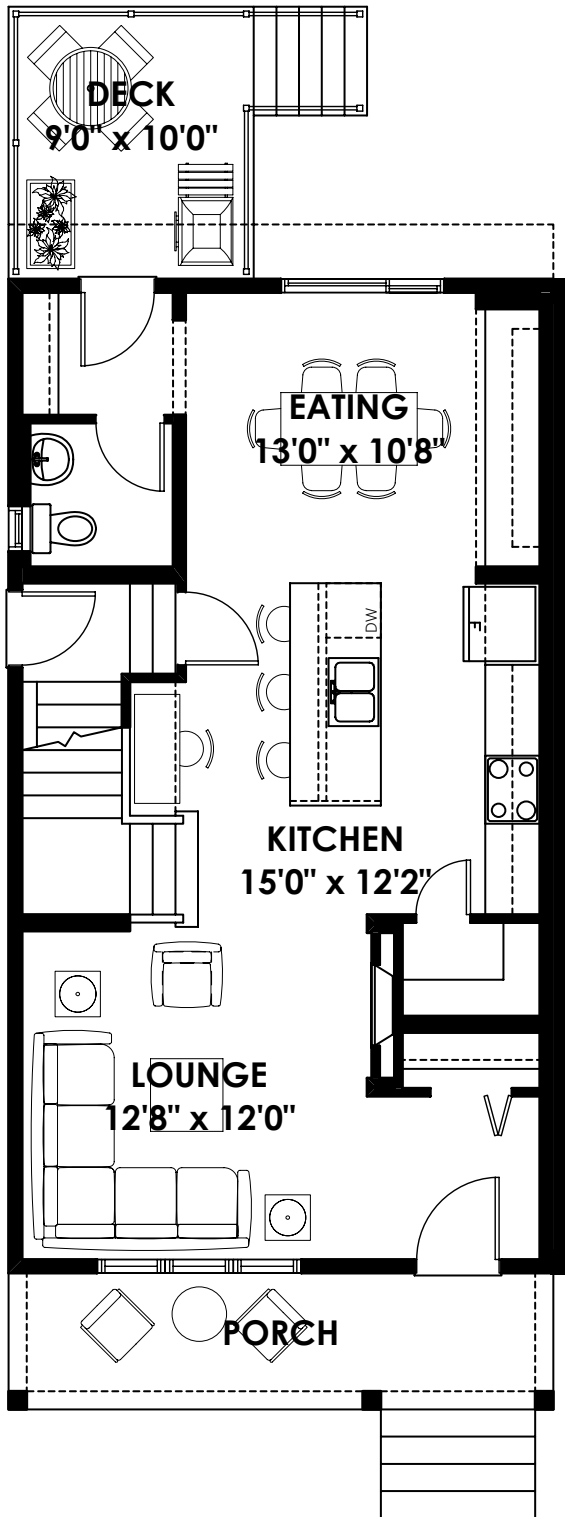
- Open and luminous main floor complete with a living room, gallery kitchen, bright dining room, and a half bathroom
- Stunning cabinetry, quartz countertops, and stainless steel appliances
- Well-designed upper floor featuring three bedrooms, two full bathrooms and laundry closet
- Unfinished basement ready for future development with 9' foundation walls, rough-in bathroom plumbing, and a side entry door
- Covered with full-sized front porch, detached garage, and a rear deck with BBQ gas line



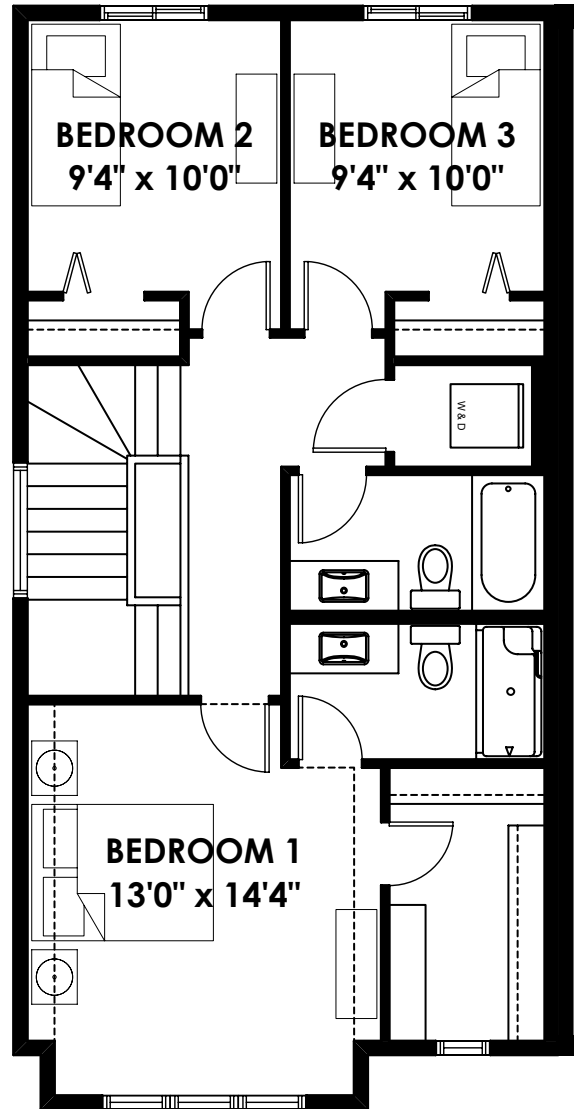
BETTER VALUE BY DESIGN  
SINCE 1978 | HOMESBYAVI.COM

Homes by **AVI**

# FLOOR PLAN



**MAIN**  
670 SQ FT



**UPPER**  
721 SQ FT

For more information or to book an appointment please contact us at **403.536.7161**

Prices are subject to change without notice. Actual floor plan, elevation, and square footage may not be exactly as shown. Square footage is measured to Alberta Building Code (ABC) regulations. Builder reserves the right to make changes without notice. E&OE.

Homes by **AVI**