

QUICK
POSSESSION

THE JEFFERSON

2,353 SQ FT | 3 BED | 2.5 BATH

26 WALCREST MANOR SE



THIS FRONT DRIVE HOME FEATURES

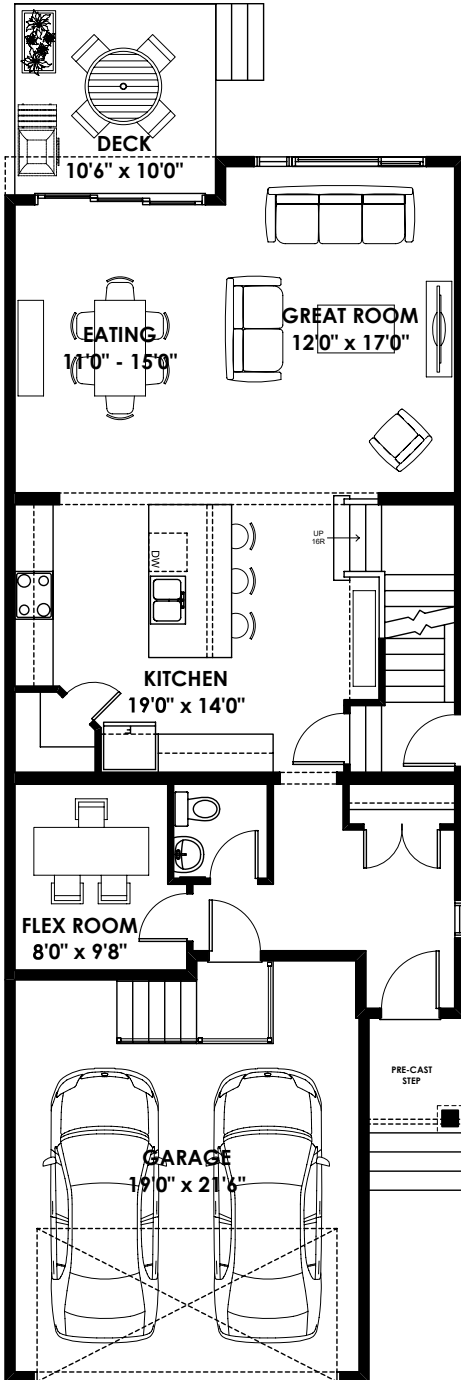
- Main floor flex room
- Cabinets to ceiling in kitchen with chimney hoodfan and built-in microwave
- Legal suite prep with side entrance, 9' foundation, 200 amp panel etc
- Double vanity in ensuite and main bathroom
- Electric fireplace in great room
- Quartz countertops throughout
- Gas lines to stove and BBQ



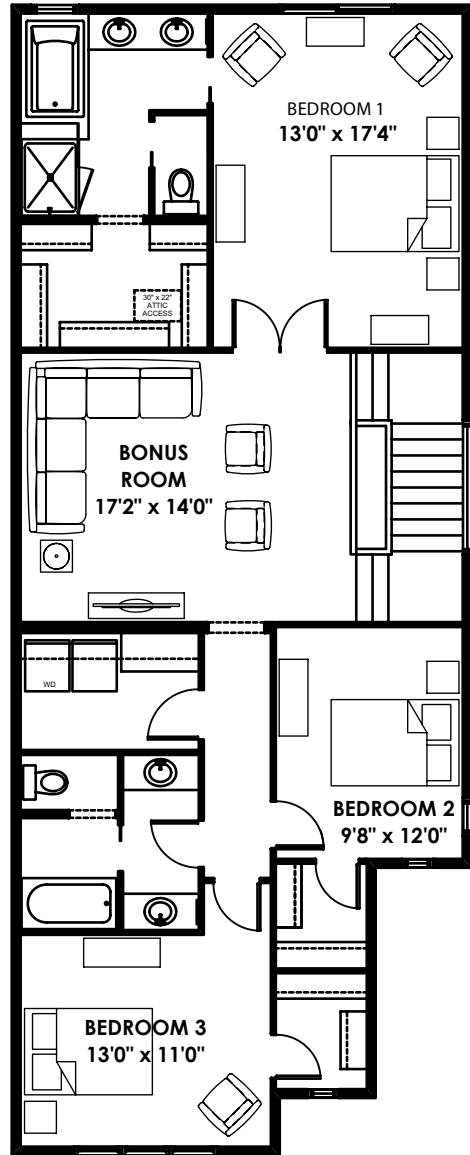
BETTER VALUE BY DESIGN
SINCE 1978 | HOMESBYAVI.COM

Homes by **AVI**

FLOOR PLAN



MAIN
1,013 SQ FT



UPPER
1,340 SQ FT

For more information or to book an appointment please contact us at **403.536.7272**

Prices are subject to change without notice. Actual floor plan, elevation, and square footage may not be exactly as shown. Square footage is measured to Alberta Building Code (ABC) regulations. Builder reserves the right to make changes without notice. E&OE.

Homes by **AVI**