

QUICK
POSSESSION

THE LINCOLN

2,567 SQ FT | 4 BED | 3 BATH

262 WALCREST WAY SE



THIS FRONT DRIVE HOME FEATURES

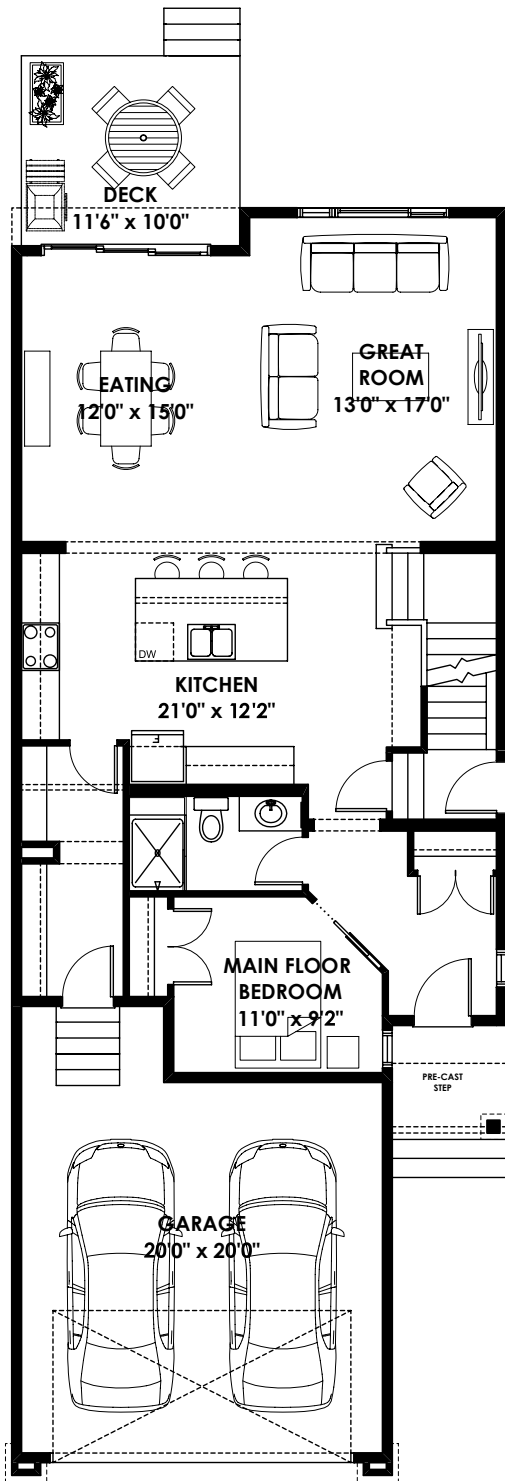
- Main Floor bedroom with 3 piece bathroom, including shower stall
- Legal suite prep with side entrance, 9' foundation, 200 amp panel etc
- Quartz to all bathrooms
- Upgraded kitchen cabinets to the ceiling with chimney hood fan and built in microwave
- Gas lines included for future gas stove and BBQ
- Electric fireplace in great room



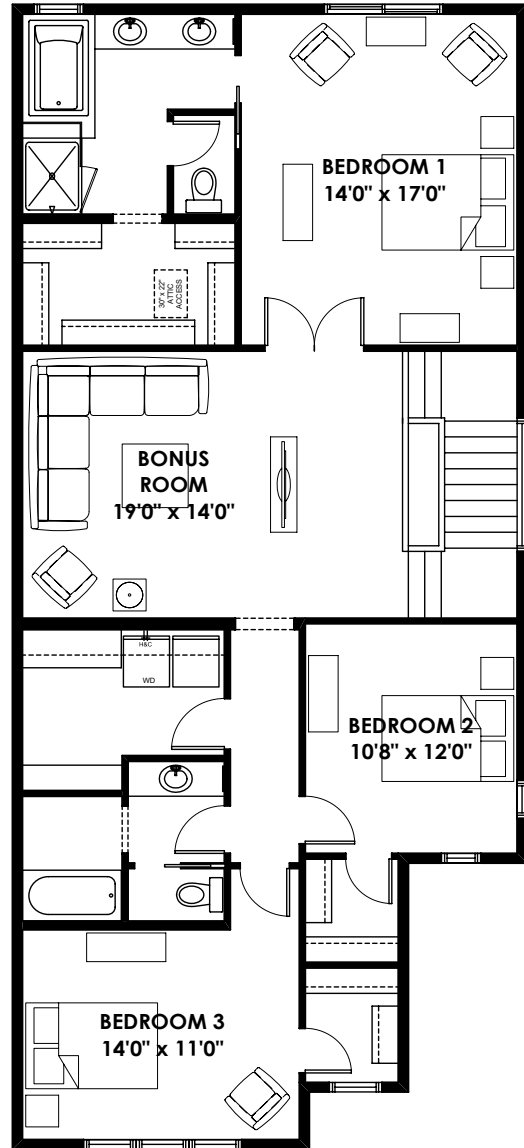
BETTER VALUE BY DESIGN
SINCE 1978 | HOMESBYAVI.COM

Homes by **AVI**

FLOOR PLAN



MAIN
1,122 SQ FT



UPPER
1,445 SQ FT

For more information or to book an appointment please contact us at **403.536.7272**

Prices are subject to change without notice. Actual floor plan, elevation, and square footage may not be exactly as shown. Square footage is measured to Alberta Building Code (ABC) regulations. Builder reserves the right to make changes without notice. E&OE.

Homes by **AVI**