

QUICK  
POSSESSION

# THE LINCOLN

2,567 SQ FT | 4 BED | 3 BATH

68 ROYSTON RISE NW



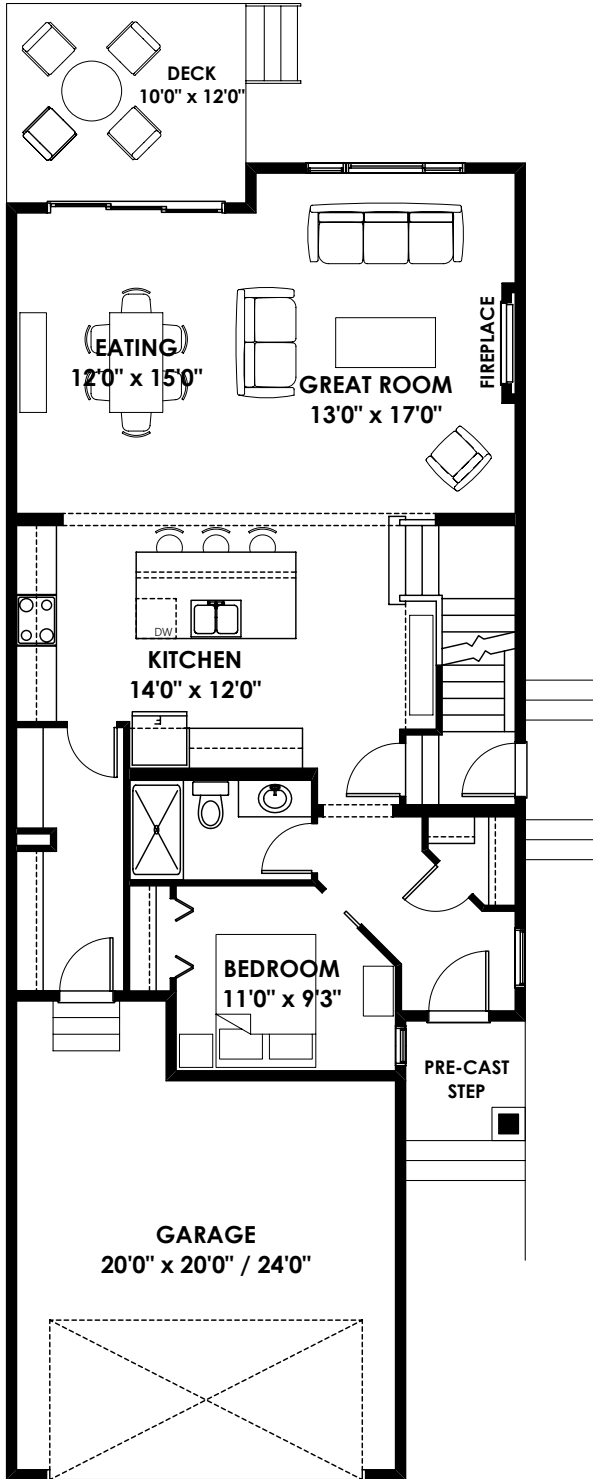
## THIS FRONT DRIVE HOME FEATURES

- Impressive kitchen with built-in wall oven & microwave with gas cooktop
- Main floor bedroom & 3-piece bath
- Gorgeous primary bedroom suite
- 3 section glass patio door
- Rear deck
- Large upgraded ensuite

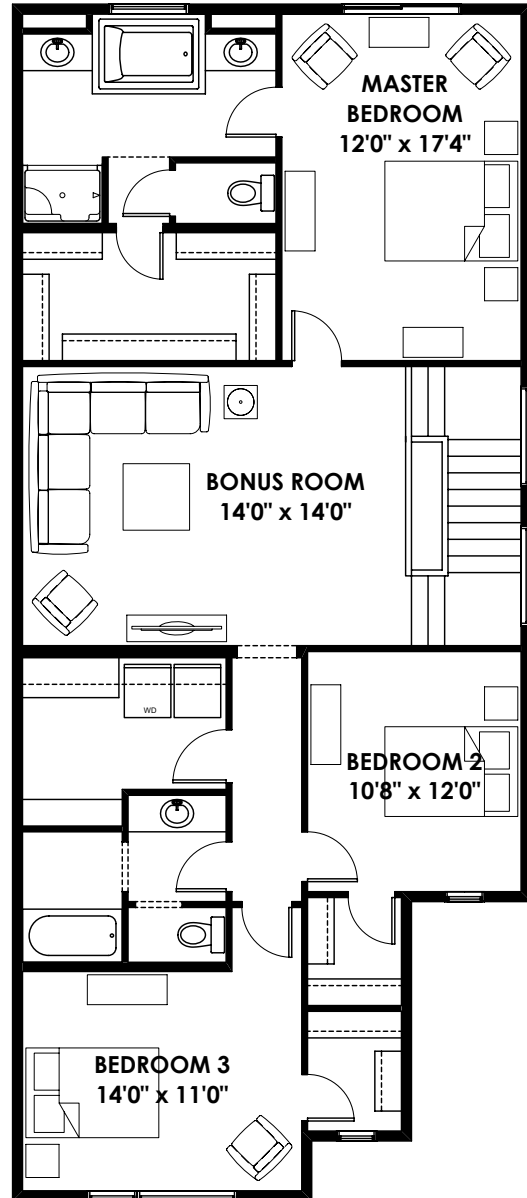
BETTER VALUE BY DESIGN  
SINCE 1978 | HOMESBYAVI.COM

Homes by **AVI**

# FLOOR PLAN



**MAIN**  
1,122 SQ FT



**UPPER**  
1,445 SQ FT

For more information or to book an appointment please contact us at **403.536.7215**

Prices are subject to change without notice. Actual floor plan, elevation, and square footage may not be exactly as shown. Square footage is measured to Alberta Building Code (ABC) regulations. Builder reserves the right to make changes without notice. E&OE.

Homes by **AVI**