

QUICK
POSSESSION

THE ANDRE

2,467 SQ FT | 3 BED | 3 BATH

53 ROYSTON TERRACE



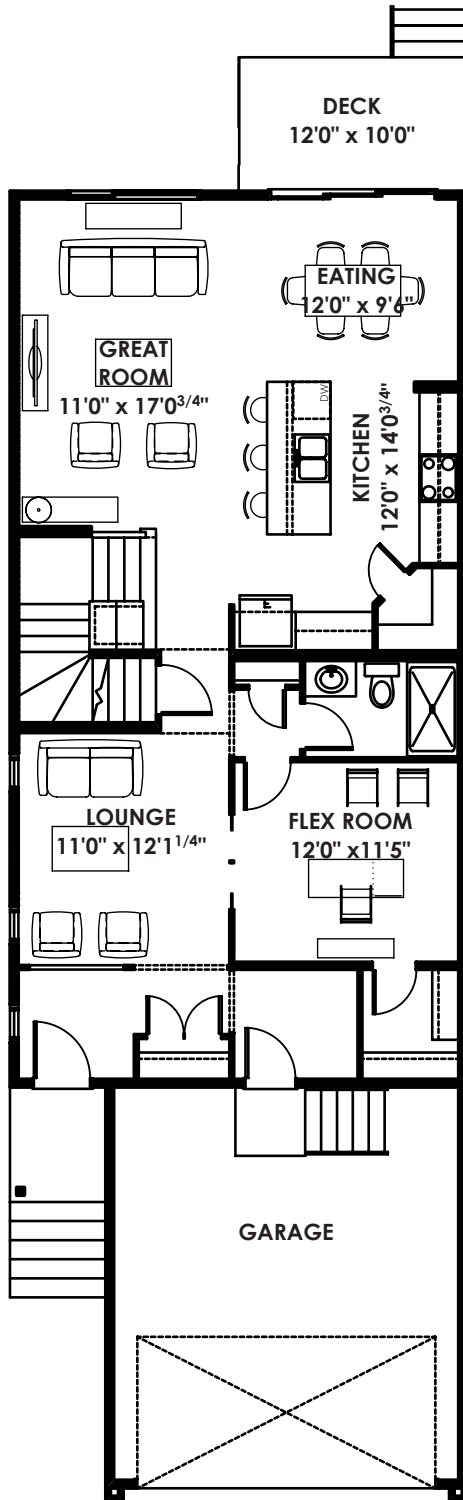
THIS FRONT DRIVE HOME FEATURES

- Main floor flex room with closet
- 3-piece bath on main floor
- Upgraded ensuite
- Rustic contemporary elevation
- Rear deck

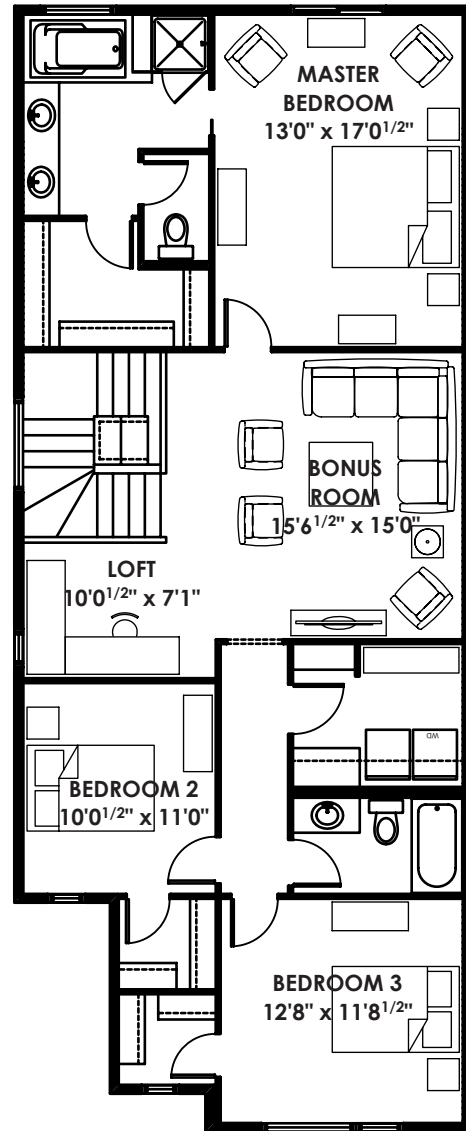
BETTER VALUE BY DESIGN
SINCE 1978 | HOMESBYAVI.COM

Homes by **AVI**

FLOOR PLAN



MAIN
1,128 SQ FT



UPPER
1,339 SQ FT

For more information or to book an appointment please contact us at **403.536.7215**

Prices are subject to change without notice. Actual floor plan, elevation, and square footage may not be exactly as shown. Square footage is measured to Alberta Building Code (ABC) regulations. Builder reserves the right to make changes without notice. E&OE.

Homes by **AVI**