

18'

# THE INDIGO

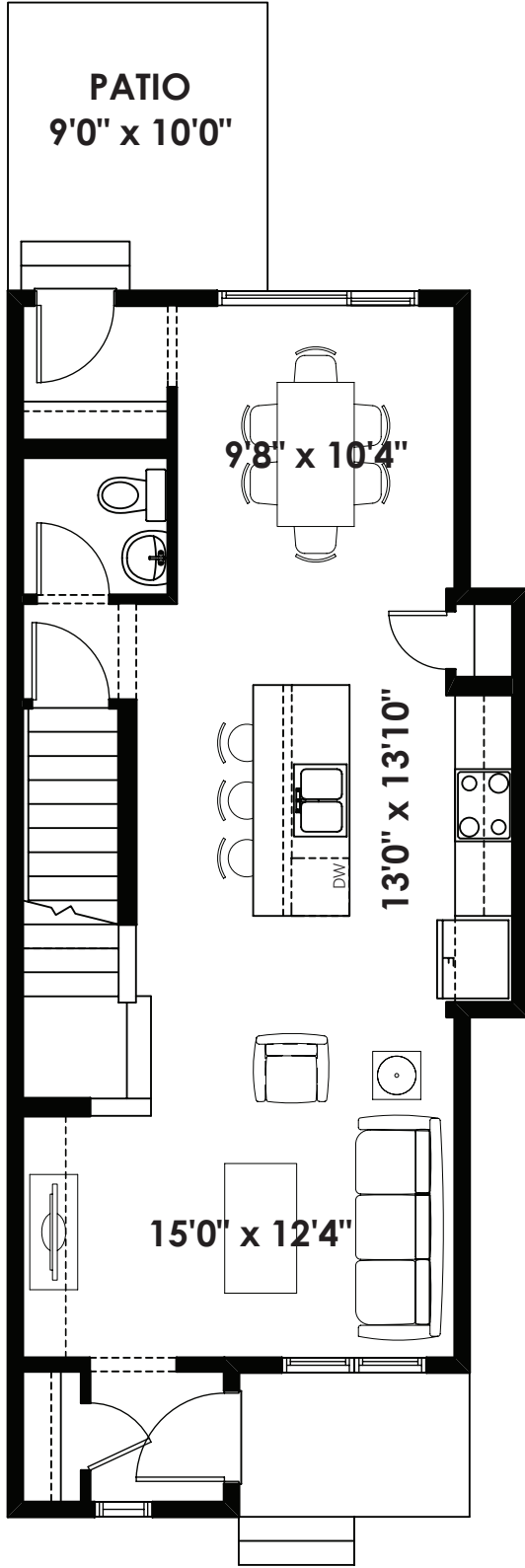
1,300 SQ FT | 3 BED | 2.5 BATH



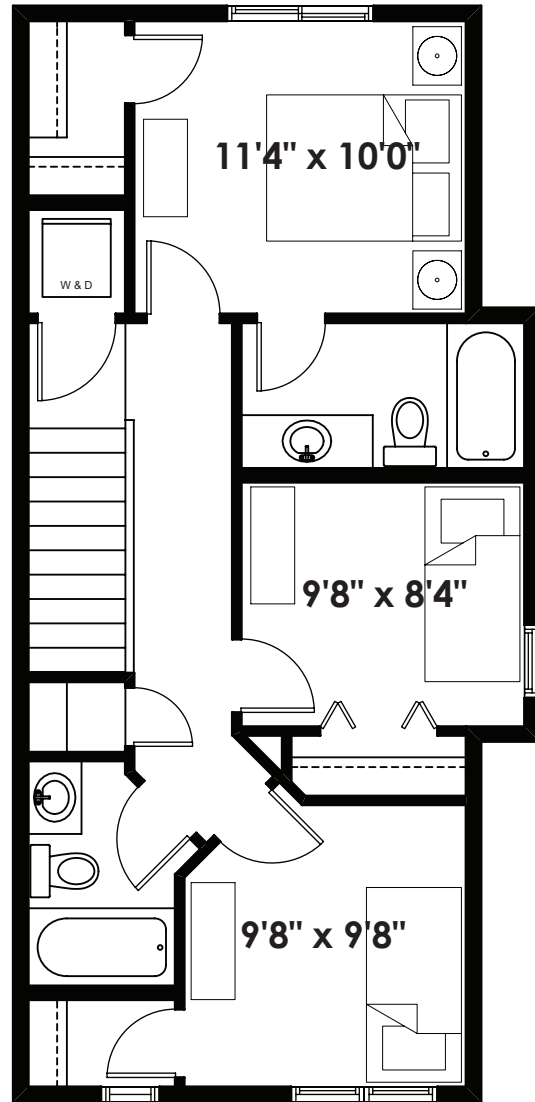
BETTER VALUE BY DESIGN  
SINCE 1978 | HOMESBYAVI.COM

Homes by **AVI**

# BASE FLOOR PLAN

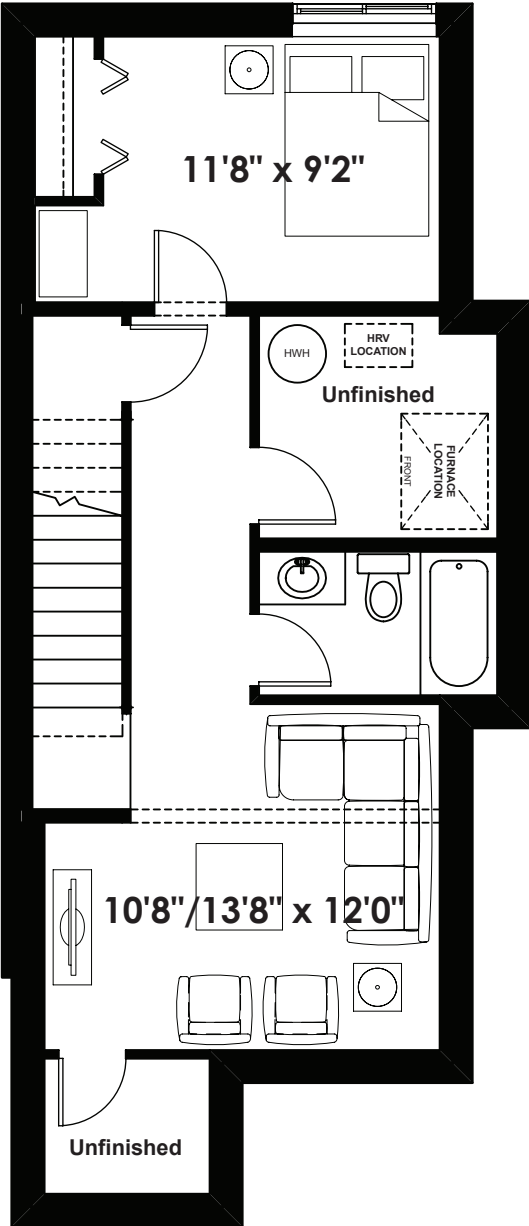


**MAIN**  
670 SQ FT



**UPPER**  
630 SQ FT

FLOOR PLAN OPTIONS



**INDIGO - Savanna Terraces II**  
**Optional Basement Room Layout**  
**439 Sq. Ft. (Finished)**