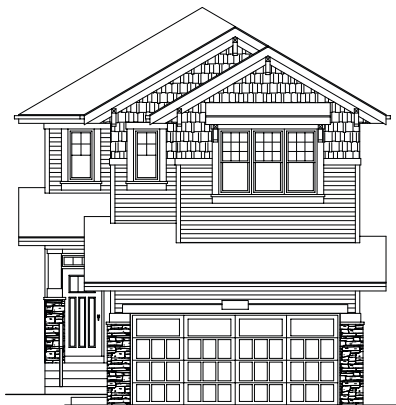


QUICK
POSSESSION

THE JEFFERSON

2,343 SQ FT | 3 BED | 2.5 BATH

2520 - 210 STREET NW



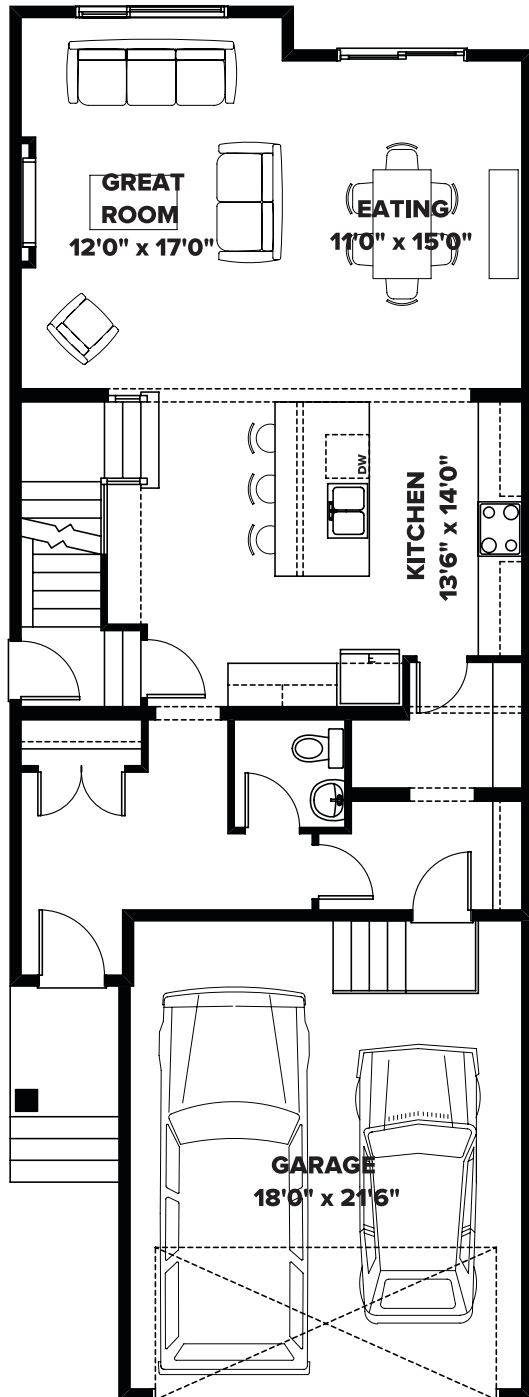
THIS FRONT DRIVE HOME FEATURES

- Chimney Hood Fan and Built in Microwave in Kitchen.
- Upgraded kitchen with soft closing pot & pan drawers and decorative backsplash tile.
- Walk through mudroom & pantry with MDF shelving.
- Electric fireplace with mantle and tiled surround.
- Railing with matte black iron spindles
- Quartz folding counter & linen cabinet in laundry room.
- Future 2 bedroom suite possible.

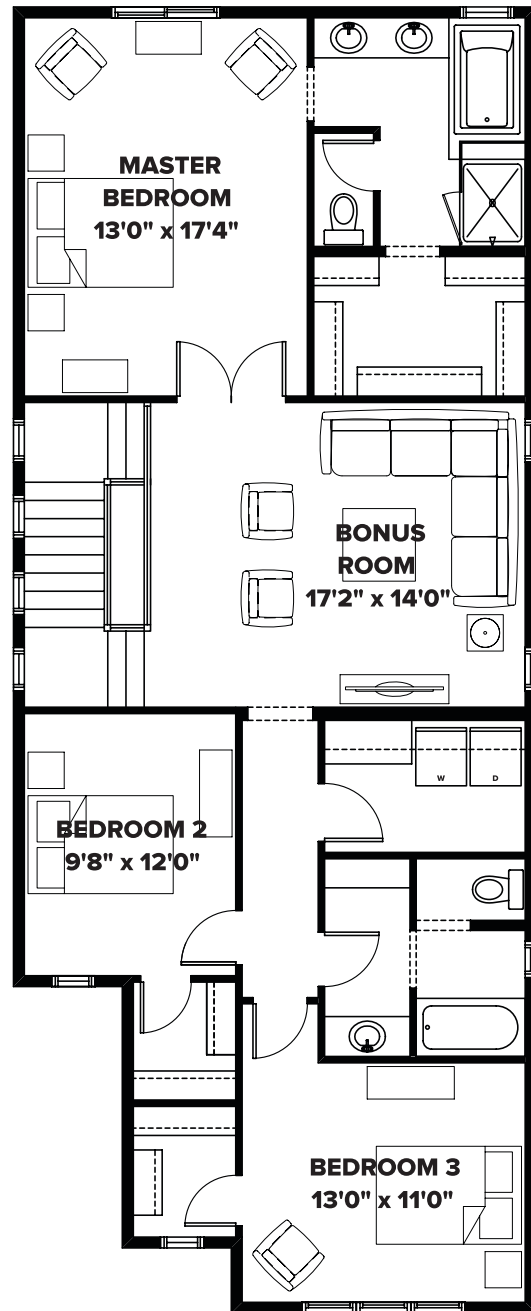
BETTER VALUE BY DESIGN
SINCE 1978 | HOMESBYAVI.COM

Homes by **AVI**

FLOOR PLAN



MAIN
1,003 SQ FT



UPPER
1,340 SQ FT

For more information or to book an appointment please contact us at **587.525.5200**

Prices are subject to change without notice. Actual floor plan, elevation, and square footage may not be exactly as shown. Square footage is measured to Alberta Building Code (ABC) regulations. Builder reserves the right to make changes without notice. E&OE.

Homes by **AVI**