

QUICK
POSSESSION

THE ROSEMONT

2,243 SQ FT | 3 BED + FLEX | 2.5 BATH

2428 - 205 STREET NW



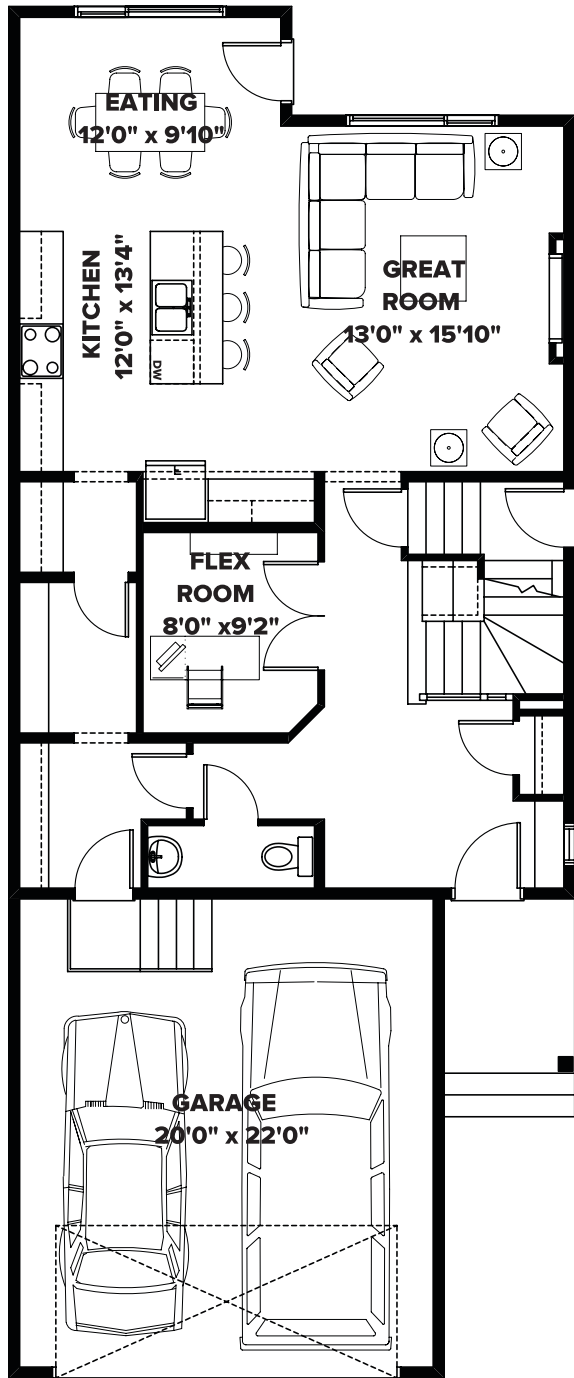
THIS FRONT DRIVE HOME FEATURES

- Chimney hood fan and built in microwave in the kitchen.
- Upgraded kitchen with glass upper cabinets and pot & pan drawers.
- Electric fireplace in the living room with mantle and shiplap detail.
- Walk through mudroom & pantry with built in bench and MDF shelving.
- Built in desk off of the kitchen with floating shelves.
- Second floor laundry with folding counter.
- Future 2 bedroom suite possible.

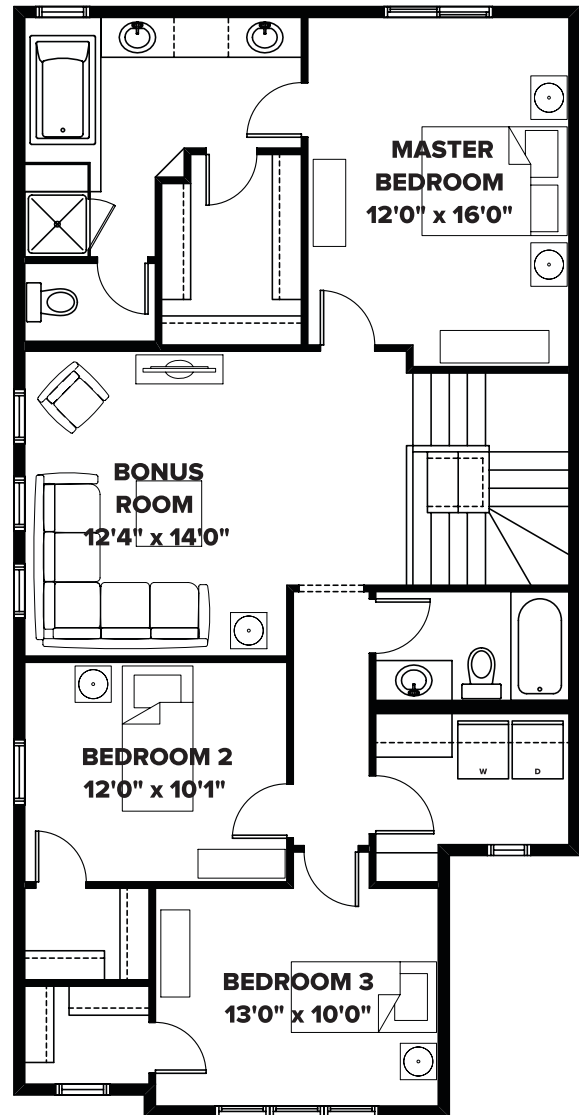
BETTER VALUE BY DESIGN
SINCE 1978 | HOMESBYAVI.COM

Homes by **AVI**

FLOOR PLAN



MAIN
1,001 SQ FT



UPPER
1,242 SQ FT

For more information or to book an appointment please contact us at **587.525.5200**

Prices are subject to change without notice. Actual floor plan, elevation, and square footage may not be exactly as shown. Square footage is measured to Alberta Building Code (ABC) regulations. Builder reserves the right to make changes without notice. E&OE.

Homes by **AVI**